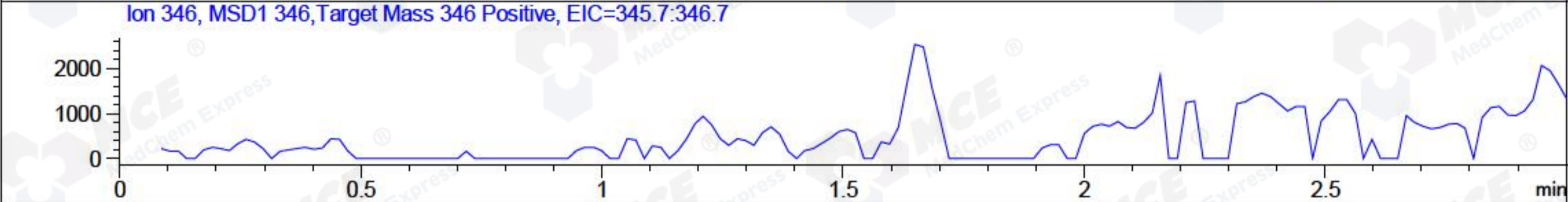
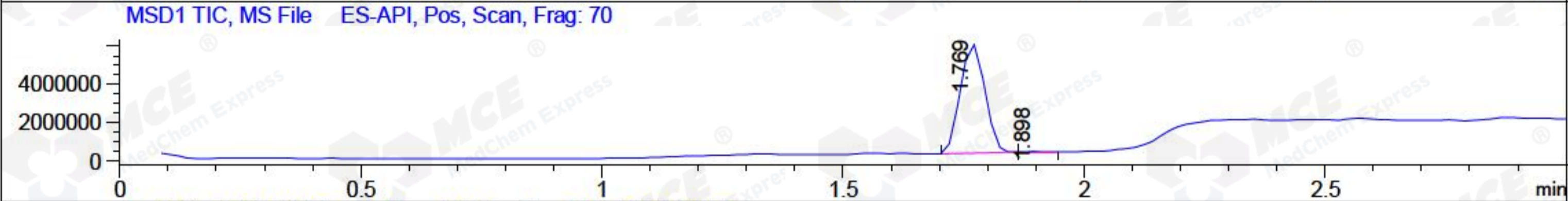
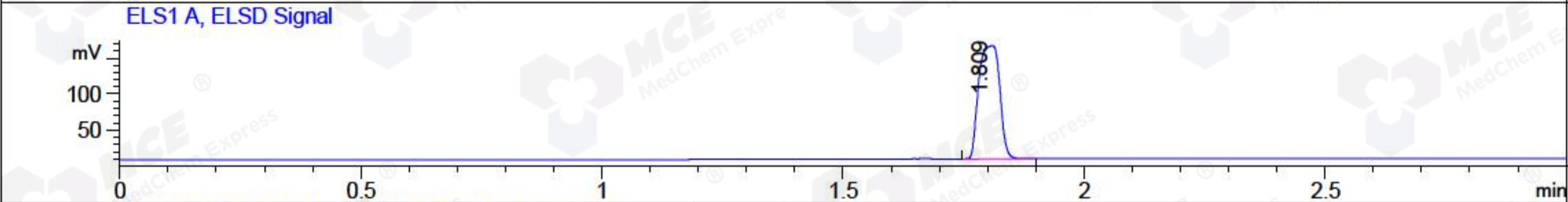
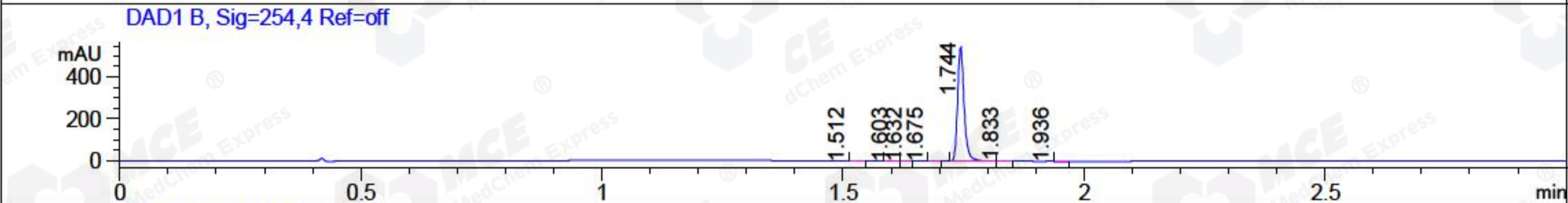
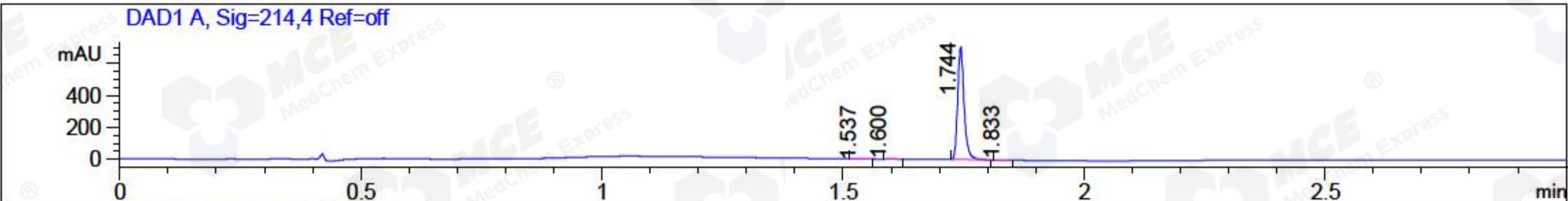


File ..ta\20170905\20170905-1\BIZ2017-905-WYQ3.D Tgt Mass (CHM) :
 Injection Date : 5 Sep 17 12:39 pm +0800 Seq. Line : 22
 Sample Name : BIZ2017-905-WYQ3 Location : PI-C-01
 Acq. Operator : SYSTEM Inj : 1
 Spec. Reported : MS Integration Inj Volume : 3 ul
 Acq. Method : D:\LCMS03\Data\20170905\20170905-1\1-POS-3MIN.M
 Analysis Method : D:\LCMS03\Data\20170905\20170905-1\1-POS-3MIN.M
 Catalog No : HY-101920 Batch#26169
 Method Info : Mobile Phase: A: water(0.01%TFA) B:ACN(0.01%TFA)
 Gradient: 5% to 95%B within 1.3 min
 Flow Rate : 1.8ml/min
 Column :SunFire C18, 4.6*50mm,3.5um A-RP-186
 Oven Temperature : 45C



Integration Results for DAD1 A, Sig=214,4 Ref=off

RetTim	Width	Area	Height	Area%	MS (+)
1.54	0.02	1.06	1.12	0.16	105
1.60	0.01	3.25	3.67	0.49	105
1.74	0.02	652.46	703.86	99.06	347
1.83	0.01	1.89	2.15	0.29	347

Integration Results for DAD1 B, Sig=254,4 Ref=off

RetTim	Width	Area	Height	Area%	MS (+)
1.51	0.02	0.52	-0.02	0.10	105
1.60	0.02	0.66	0.71	0.13	105
1.63	0.01	0.26	0.34	0.05	105
1.68	0.01	0.27	-0.01	0.05	105
1.74	0.02	506.20	545.39	99.44	347
1.83	0.01	0.93	1.17	0.18	347
1.94	0.02	0.23	0.16	0.05	105

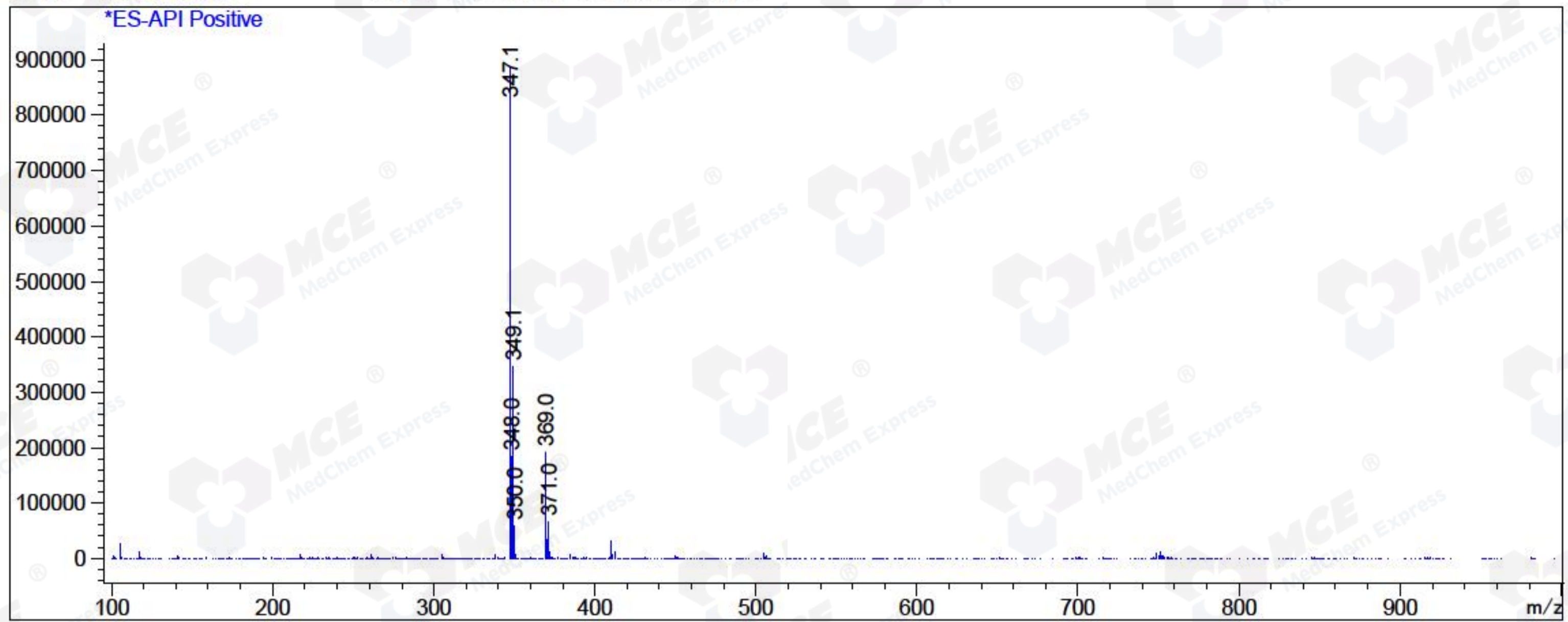
Integration Results for MSD1 TIC, MS File

1.77	0.06	20139714.00	5712166.00	99.61	347
1.90	0.04	79605.67	34393.68	0.39	105

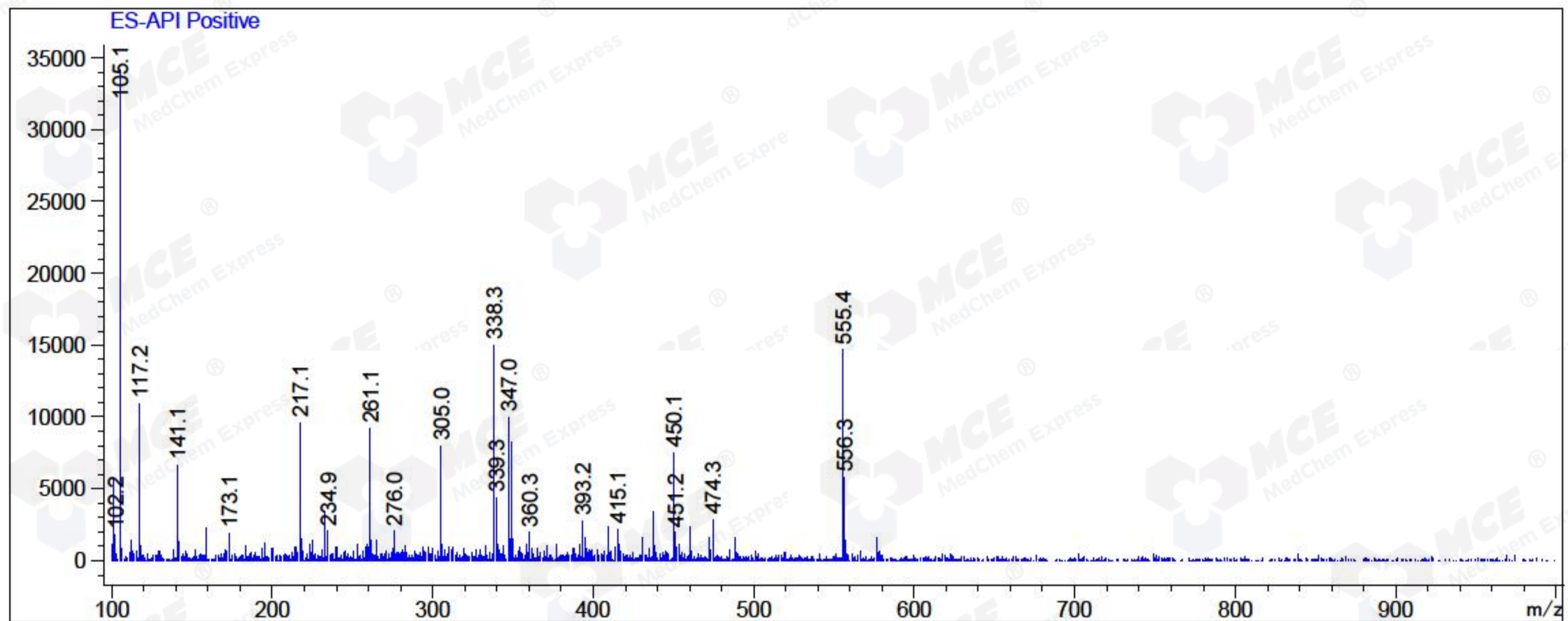
RetTim	Width	Area	Height	Area%	MS (+)
--------	-------	------	--------	-------	--------

Ret. Time: 1.77

<<<< POSITIVE SPECTRA >>>>



Ret. Time: 1.90



*** End of Report ***