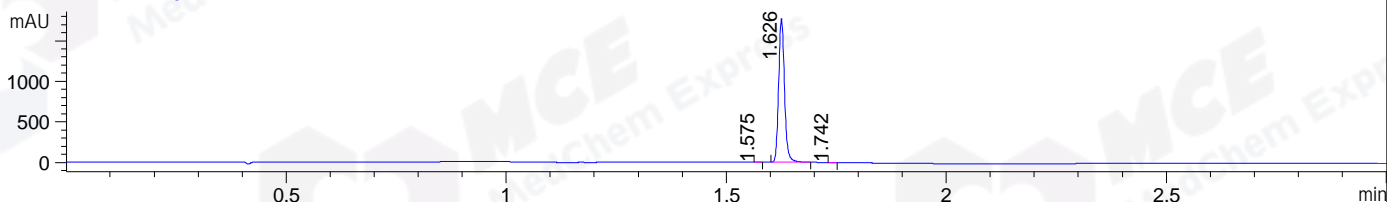
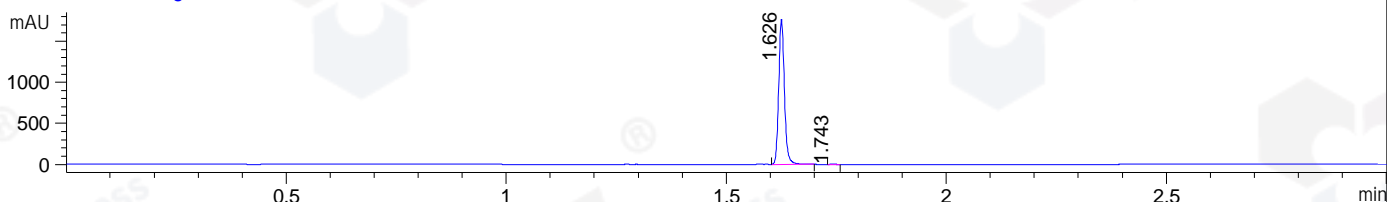


File ..DATA\2020\20201106\1146\CPK2020-N06-25141.D Tgt Mass (CHM):
Injection Date : 6 Nov 20 5:53 pm +0800 Seq. Line : 95
Sample Name : CPK2020-N06-25141 Location : P1-C-03
Acq. Operator : zyj_1547 Inj : 1
Spec. Reported : MS Integration Inj Volume : 1 ul
Acq. Method : D:\Chem32\1\data\2020\20201106\1146\1-POS-3MIN.M
Analysis Method : D:\CHEM32\1\DATA\2020\20201106\1146\1-POS-3MIN.M
CAS NO. : 1384071-99-1
Method Info : Mobile Phase: A: water(0.01%TFA) B:ACN(0.01%TFA)
Gradient: 5% to 95%B within 1.3 min
Flow Rate :1.8ml/min
Column :SunFire C18, 4.6*50mm,3.5um A-RP-698

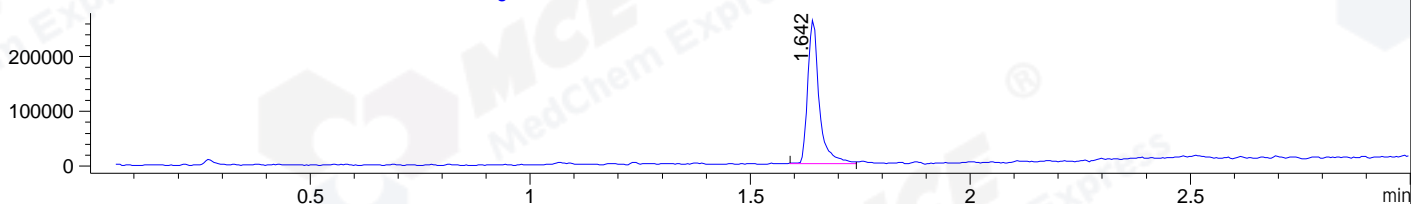
DAD1 B, Sig=214,4 Ref=off



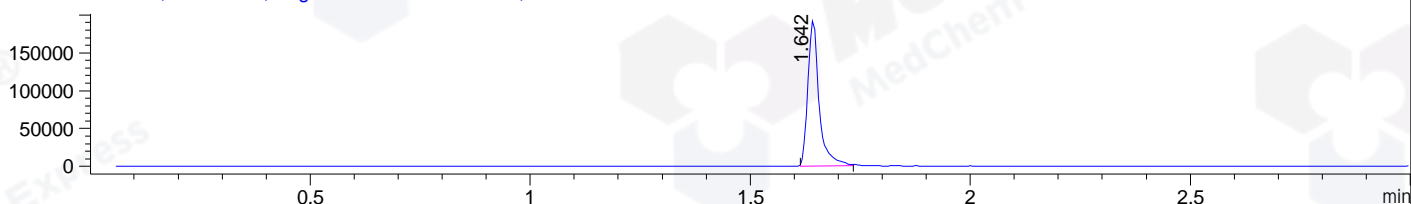
DAD1 C, Sig=254,4 Ref=off



MSD1 TIC, MS File ES-API, Pos, Scan, Frag: 70



Ion 474, MSD1 474, Target Mass 473 +H Positive, EIC=473.7:474.7



Integration Results for DAD1 B, Sig=214,4 Ref=off

RetTim	Width	Area	Height	Area%	MS (+)
1.57	0.01	1.30	1.79	0.08	ND
1.63	0.02	1640.60	1775.86	99.85	474
1.74	0.01	1.09	1.43	0.07	474

Integration Results for DAD1 C, Sig=254,4 Ref=off

RetTim	Width	Area	Height	Area%	MS (+)
1.63	0.01	1590.48	1771.79	99.88	474
1.74	0.01	1.85	2.24	0.12	474

Integration Results for MSD1 TIC, MS File

RetTim	Width	Area	Height	Area%	MS (+)
1.64	0.03	475409.19	262164.75	100.00	474

Ret. Time: 1.64

<<<< POSITIVE SPECTRA >>>>

ES-API Positive

