

## BIIE-0246

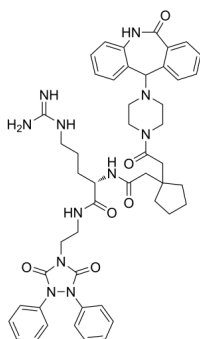
Cat. No.: HY-101986  
Batch No.: 34525  
CAS No.: 246146-55-4  
Molecular Formula: C<sub>49</sub>H<sub>57</sub>N<sub>11</sub>O<sub>6</sub>

### ANALYTICAL DATA

Theoretical: C(65.35%)、H(6.44%)、N(17.11%)

Result: C(65.17%)、H(6.66%)、N(17.06%)

Chemical Structure:



**Caution: Product has not been fully validated for medical applications. For research use only.**

Tel: 609-228-6898

Fax: 609-228-5909

E-mail: [tech@MedChemExpress.com](mailto:tech@MedChemExpress.com)

Address: 1 Deer Park Dr, Suite Q, Monmouth Junction, NJ 08852, USA