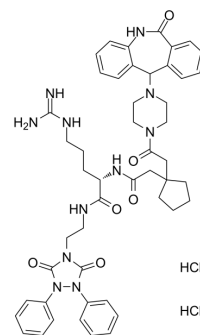


BIIE-0246 dihydrochloride

Cat. No.:	HY-101986C
CAS No.:	246146-31-6
Molecular Formula:	C ₄₉ H ₅₉ Cl ₂ N ₁₁ O ₆
Molecular Weight:	968.97
Target:	Neuropeptide Y Receptor
Pathway:	GPCR/G Protein; Neuronal Signaling
Storage:	Please store the product under the recommended conditions in the Certificate of Analysis.



BIOLOGICAL ACTIVITY

Description	BIIE-0246 dihydrochloride (AR-H 053591 dihydrochloride) is a potent and highly selective non-peptide neuropeptide Y (NPY) Y ₂ receptor antagonist, with an IC ₅₀ value of 15 nM ^[1] .
-------------	--

REFERENCES

[1]. Dumont Y, et al. BIIE0246, a potent and highly selective non-peptide neuropeptide Y Y₂ receptor antagonist. Br J Pharmacol. 2000 Mar;129(6):1075-88.

Caution: Product has not been fully validated for medical applications. For research use only.

Tel: 609-228-6898

Fax: 609-228-5909

E-mail: tech@MedChemExpress.com

Address: 1 Deer Park Dr, Suite Q, Monmouth Junction, NJ 08852, USA