

File ..Data\2018\20181019\20181019\SQS5963-023-3.D Tgt Mass (CHM):

Injection Date : 19 Oct 18 9:37 am +0800 Seq. Line : 15

Sample Name : SQS5963-023-3 Location : P1-A-11

Acq. Operator : SYSTEM Inj : 1

Spec. Reported : MS Integration Inj Volume : 1 ul

Acq. Method : D:\LCMS03\Data\2018\20181019\20181019\1-POS-3MIN.M

Analysis Method : D:\LCMS03\Data\2018\20181019\20181019\1-POS-3MIN.M

Catalog No : HY-102007A Batch#33524

Method Info : Mobile Phase: A: water(0.01%TFA) B:ACN(0.01%TFA)

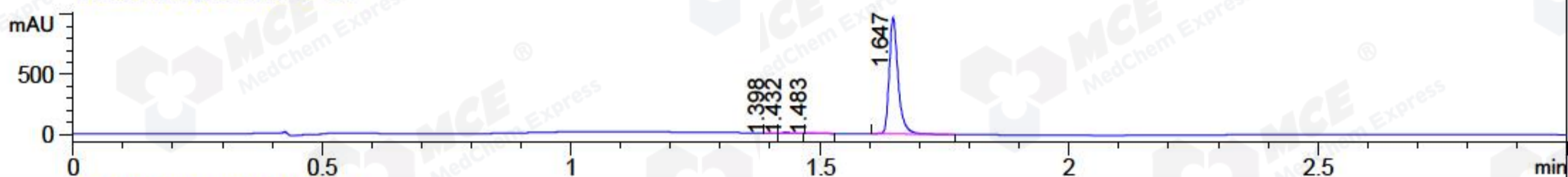
Gradient: 5% to 95%B within 1.3 min

Flow Rate :1.8ml/min

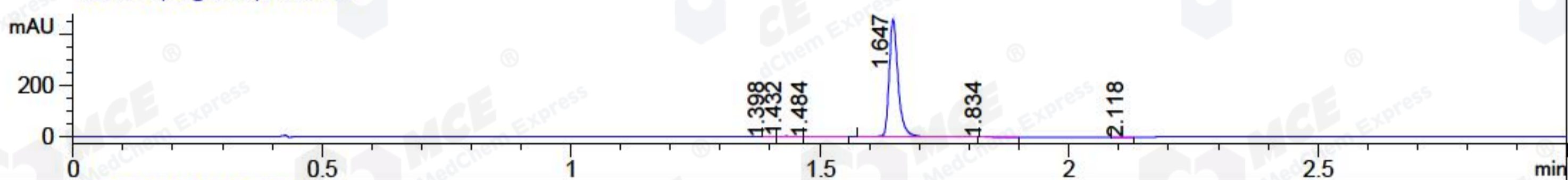
Column :SunFire C18, 4.6*50mm,3.5um A-RP-186

Oven Temperature : 45C

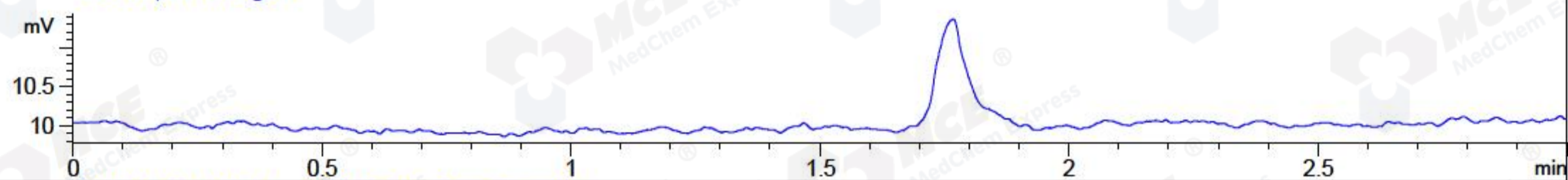
DAD1 A, Sig=214,4 Ref=off



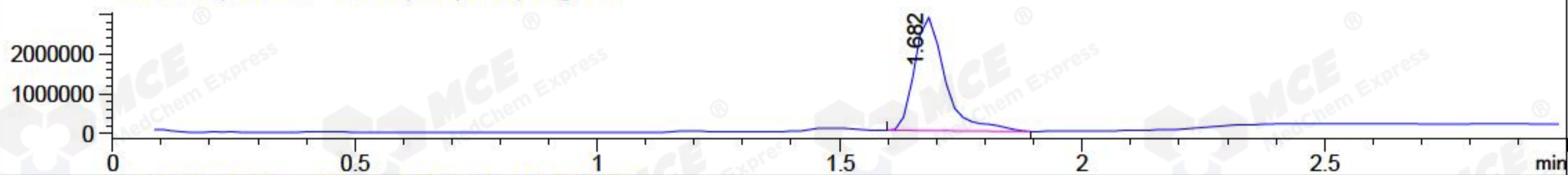
DAD1 B, Sig=254,4 Ref=off



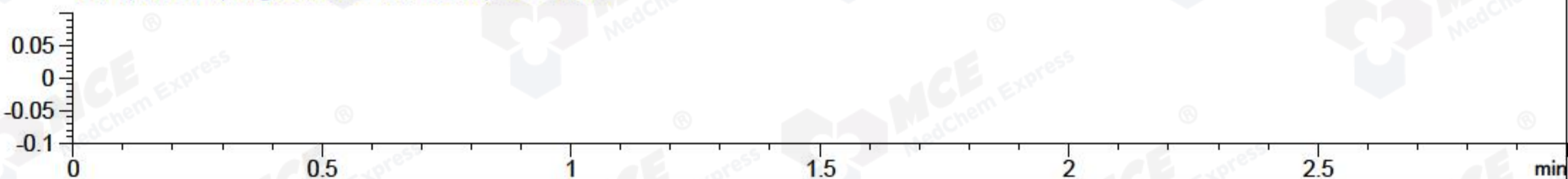
ELS1 A, ELSD Signal



MSD1 TIC, MS File ES-API, Pos, Scan, Frag: 70



Ion 1, MSD1 1, Target Mass 0 +H Positive, EIC=0.7:1.7



Integration Results for DAD1 A, Sig=214,4 Ref=off

RetTim	Width	Area	Height	Area%	MS (+)
1.40	0.01	0.80	1.01	0.07	130
1.43	0.02	5.04	4.06	0.42	892
1.48	0.02	2.01	1.69	0.17	888
1.65	0.02	1196.63	967.55	99.35	890

Integration Results for DAD1 B, Sig=254,4 Ref=off

RetTim	Width	Area	Height	Area%	MS (+)
1.40	0.01	0.28	0.35	0.05	130
1.43	0.02	1.87	1.46	0.33	892
1.48	0.02	1.48	0.92	0.26	888
1.65	0.02	567.74	456.75	99.26	890
1.83	0.02	0.37	0.30	0.06	890
2.12	0.02	0.22	0.20	0.04	105

Integration Results for ELS1 A, ELSD Signal

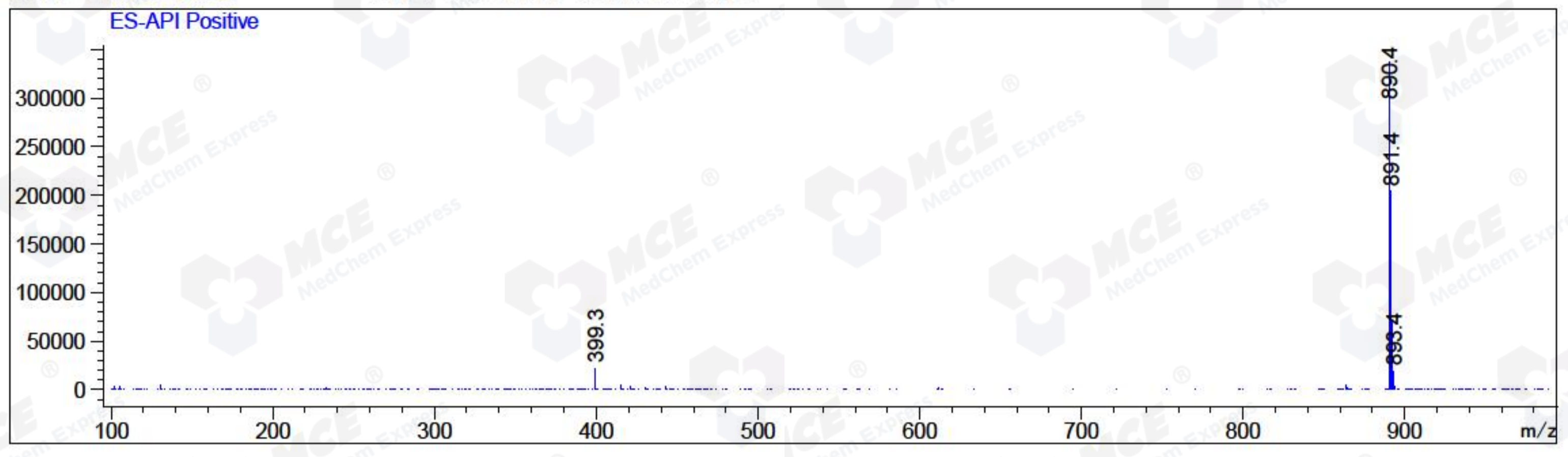
RetTim	Width	Area	Height	Area%	MS (+)
--------	-------	------	--------	-------	--------

Integration Results for MSD1 TIC, MS File

RetTim	Width	Area	Height	Area%	MS (+)
1.68	0.07	12713582.00	2841544.00	100.00	890

Ret. Time: 1.68

<<<< POSITIVE SPECTRA >>>>



*** End of Report ***