

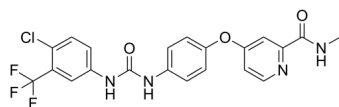
Sorafenib

Cat. No.: HY-10201
Batch No.: 123091
CAS No.: 284461-73-0
Molecular Formula: C₂₁H₁₆ClF₃N₄O₃

ANALYTICAL DATA

Theoretical: C(54.26%)、H(3.47%)、N(12.05%)
Result: C(54.23%)、H(3.40%)、N(12.06%)

Chemical Structure:



Caution: Product has not been fully validated for medical applications. For research use only.

Tel: 609-228-6898

Fax: 609-228-5909

E-mail: tech@MedChemExpress.com

Address: 1 Deer Park Dr, Suite Q, Monmouth Junction, NJ 08852, USA