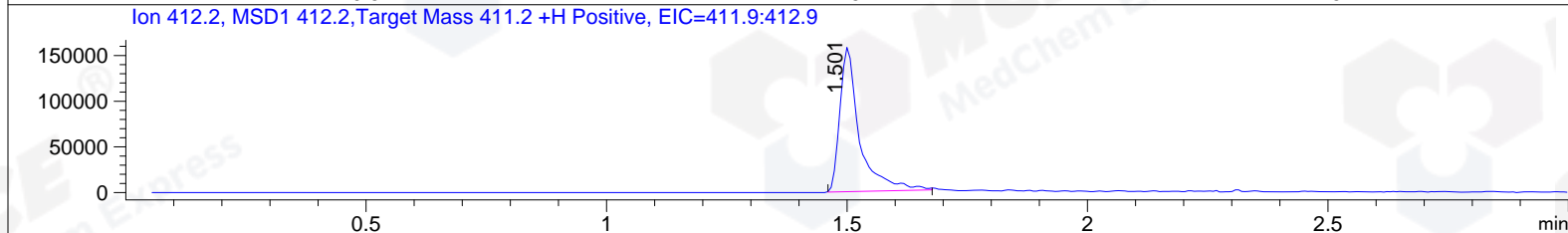
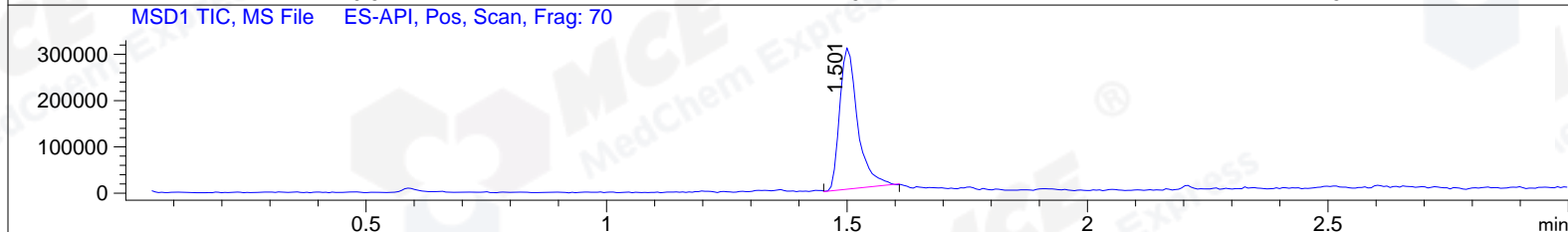
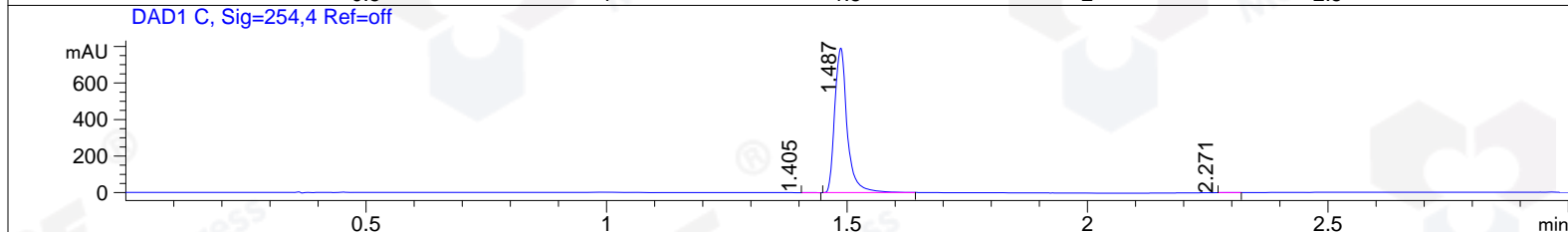
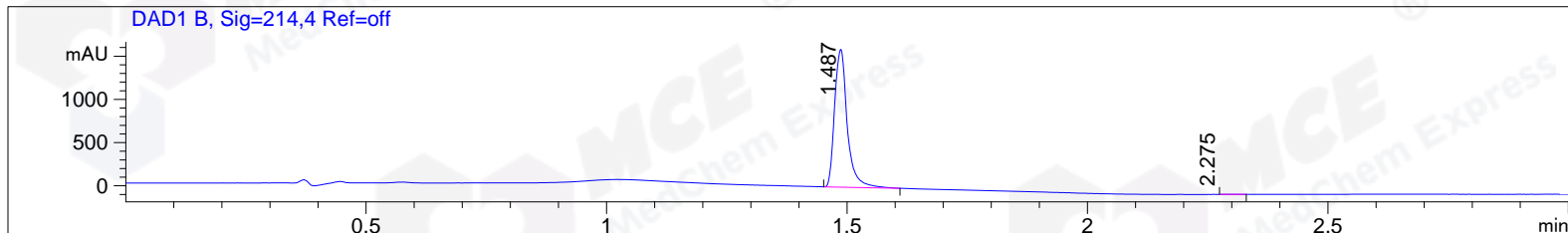


File ..\DATA\2019\20190418\564\BIZ2019-417-WYQ10.D Tgt Mass (CHM):  
 Injection Date : 18 Apr 19 1:01 pm +0800 Seq. Line : 25  
 Sample Name : BIZ2019-417-WYQ10 Location : P2-B-03  
 Acq. Operator : LQ\_1052 Inj : 1  
 Spec. Reported : MS Integration Inj Volume : 1.5 ul  
 Acq. Method : D:\Chem32\1\data\2019\20190418\564\1-POS-3MIN-1.M  
 Analysis Method : D:\CHEM32\1\DATA\2019\20190418\564\1-POS-3MIN-1.M  
 Catalog No : HY-102023 Batch# 40118-20190417  
 Method Info : Mobile Phase: A: water(0.01%TFA) B:ACN(0.01%TFA)  
 Gradient: 5% to 95%B within 1.3 min  
 Flow Rate :1.8ml/min  
 Column :SunFire C18, 4.6\*50mm,3.5um A-RP-314  
 Oven Temperature : 45



Integration Results for DAD1 B, Sig=214,4 Ref=off

RetTim	Width	Area	Height	Area%	MS(+)
1.49	0.04	2915.02	1594.36	99.90	412
2.27	3.35	3.03	0.01	0.10	142

Integration Results for DAD1 C, Sig=254,4 Ref=off

RetTim	Width	Area	Height	Area%	MS(+)
1.40	1.84	1.22	0.38	0.09	ND
1.49	0.03	1418.17	791.03	99.86	412
2.27	2.44	0.71	-0.17	0.05	412

Integration Results for MSD1 TIC, MS File

RetTim	Width	Area	Height	Area%	MS(+)
1.50	0.04	789784.50	308375.38	100.00	412

Ret. Time: 1.50

<<<< POSITIVE SPECTRA >>>>

ES-API Positive

