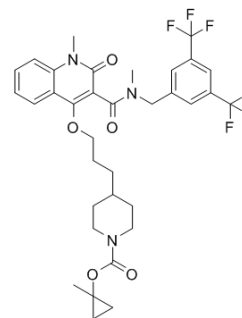


## SMS2-IN-1

Cat. No.:	HY-102041
CAS No.:	2098890-15-2
Molecular Formula:	C <sub>34</sub> H <sub>37</sub> F <sub>6</sub> N <sub>3</sub> O <sub>5</sub>
Molecular Weight:	681.67
Target:	Others
Pathway:	Others
Storage:	Please store the product under the recommended conditions in the COA.



### BIOLOGICAL ACTIVITY

Description	SMS2-IN-1 is a highly selective sphingomyelin synthase 2 (SMS2) inhibitor with an IC <sub>50</sub> of 6.5 nM.
IC <sub>50</sub> & Target	IC <sub>50</sub> : 6.5 nM (SMS2) <sup>[1]</sup>

### REFERENCES

[1]. Adachi R, et al. Discovery and characterization of selective human sphingomyelin synthase 2 inhibitors. *Eur J Med Chem.* 2017 Aug 18;136:283-293.

**Caution: Product has not been fully validated for medical applications. For research use only.**

Tel: 609-228-6898

Fax: 609-228-5909

E-mail: [tech@MedChemExpress.com](mailto:tech@MedChemExpress.com)

Address: 1 Deer Park Dr, Suite Q, Monmouth Junction, NJ 08852, USA