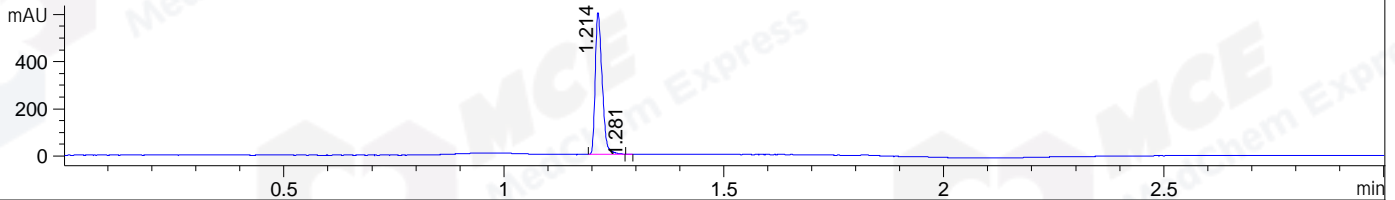
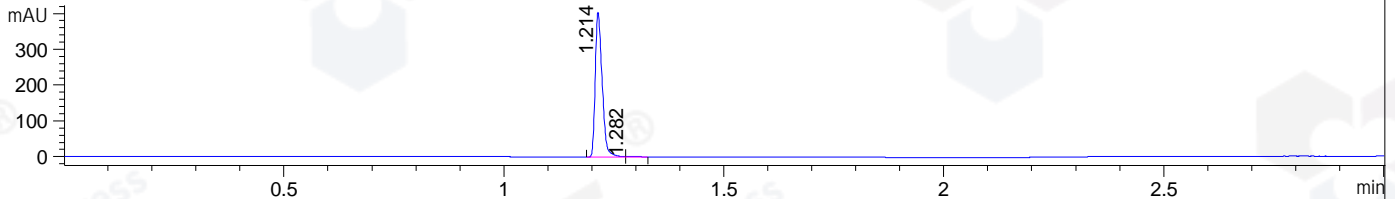


File ..DATA\2019\20191030\748\CPK2019-029-23570-.D Tgt Mass (CHM):
Injection Date : 30 Oct 19 5:02 pm +0800 Seq. Line : 13
Sample Name : CPK2019-029-23570 Location : P1-E-05
Acq. Operator : ZJ_1432 Inj : 1
Spec. Reported : MS Integration Inj Volume : 0.3 ul
Acq. Method : D:\Chem32\1\data\2019\20191030\748\1-POS-3MIN.M
Analysis Method : D:\CHEM32\1\DATA\2019\20191030\748\1-POS-3MIN.M
Catalog No : HY-10207 Batch#23570
Method Info : Mobile Phase: A: water(0.01%TFA) B:ACN(0.01%TFA)
Gradient: 5% to 95%B within 1.3 min
Flow Rate :1.8ml/min
Column :SunFire C18, 4.6*50mm,3.5um A-RP-433
Oven Temperature : 45□

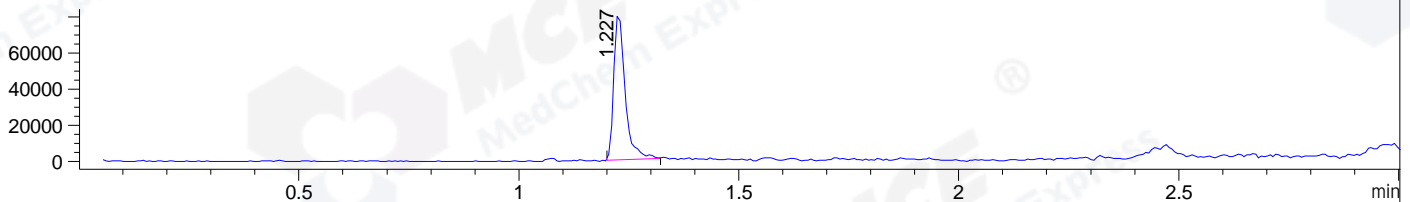
DAD1 B, Sig=214,4 Ref=off



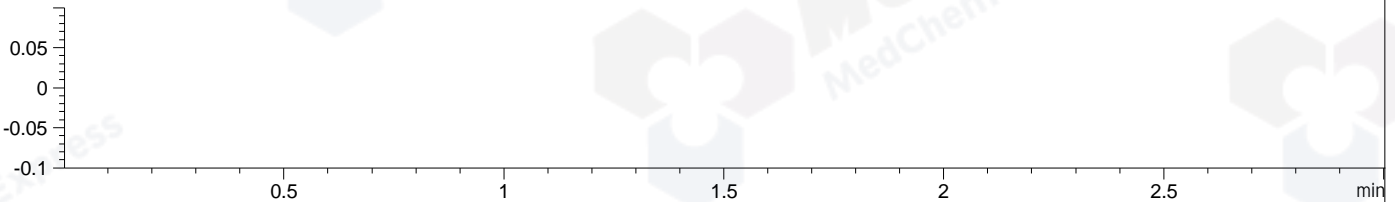
DAD1 C, Sig=254,4 Ref=off



MSD1 TIC, MS File ES-API, Pos, Scan, Frag: 70



Ion 1, MSD1 1, Target Mass 0 +H Positive, EIC=0.7:1.7



Integration Results for DAD1 B, Sig=214,4 Ref=off

RetTim	Width	Area	Height	Area%	MS (+)
1.21	0.02	655.32	602.00	99.96	393
1.28	0.01	0.27	0.45	0.04	393

Integration Results for DAD1 C, Sig=254,4 Ref=off

RetTim	Width	Area	Height	Area%	MS (+)
1.21	0.02	442.95	404.80	99.57	393
1.28	0.03	1.91	1.25	0.43	ND

Integration Results for MSD1 TIC, MS File

RetTim	Width	Area	Height	Area%	MS (+)
1.23	0.03	143145.02	81752.98	100.00	393

Ret. Time: 1.23

<<<< POSITIVE SPECTRA >>>>

ES-API Positive

