

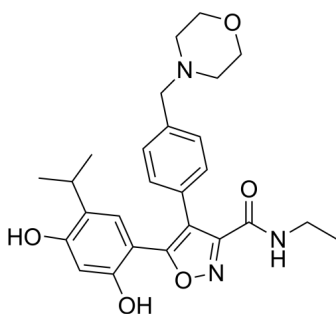
Luminespib

Cat. No.: HY-10215
Batch No.: 60762
CAS No.: 747412-49-3
Molecular Formula: C₂₆H₃₁N₃O₅

ANALYTICAL DATA

Theoretical: C(63.63%), H(6.94%), N(8.56%)
Result: C(64.00%), H(6.96%), N(8.62%)

Chemical Structure:



Caution: Product has not been fully validated for medical applications. For research use only.

Tel: 609-228-6898

Fax: 609-228-5909

E-mail: tech@MedChemExpress.com

Address: 1 Deer Park Dr, Suite Q, Monmouth Junction, NJ 08852, USA