

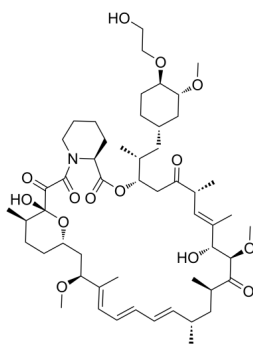
Everolimus

Cat. No.: HY-10218
Batch No.: 263382
CAS No.: 159351-69-6
Molecular Formula: $C_{53}H_{83}NO_{14}$

ANALYTICAL DATA

Theoretical: C(65.21%), H(8.78%), N(1.43%)
Result: C(64.97%), H(9.01%), N(1.34%)

Chemical Structure:



Caution: Product has not been fully validated for medical applications. For research use only.

Tel: 609-228-6898

Fax: 609-228-5909

E-mail: tech@MedChemExpress.com

Address: 1 Deer Park Dr, Suite Q, Monmouth Junction, NJ 08852, USA