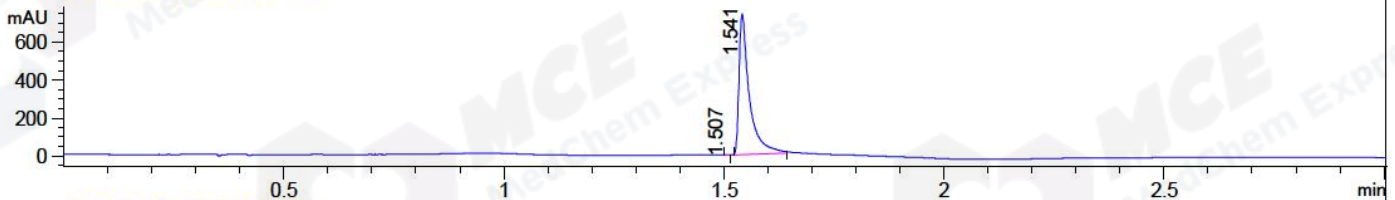
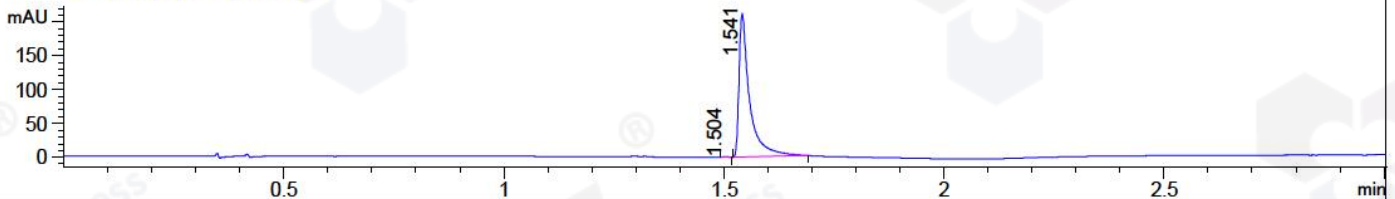


File ..EM32\1\DATA\20180615\257\BIZ2018-615-WYQ1.D Tgt Mass (CHM):
Injection Date : 15 Jun 18 7:12 pm +0800 Seq. Line : 5
Sample Name : BIZ2018-615-WYQ1 Location : P1-F-04
Acq. Operator : LQ_1052 Inj : 1
Spec. Reported : MS Integration Inj Volume : 1 ul
Acq. Method : D:\chem32\1\DATA\20180615\257\1-POS-3MIN-1.M
Analysis Method : D:\CHEM32\1\DATA\20180615\257\1-POS-3MIN-1.M
Catalog No : HY-10227 Batch#31008 A-RP-314
Method Info : Mobile Phase: A: water(0.01%TFA) B:ACN(0.01%TFA)
Gradient: 5% to 95%B within 1.3 min
Flow Rate :1.8ml/min
Column :SunFire C18, 4.6*50mm,3.5um A-RP-314
Oven Temperature : 45□

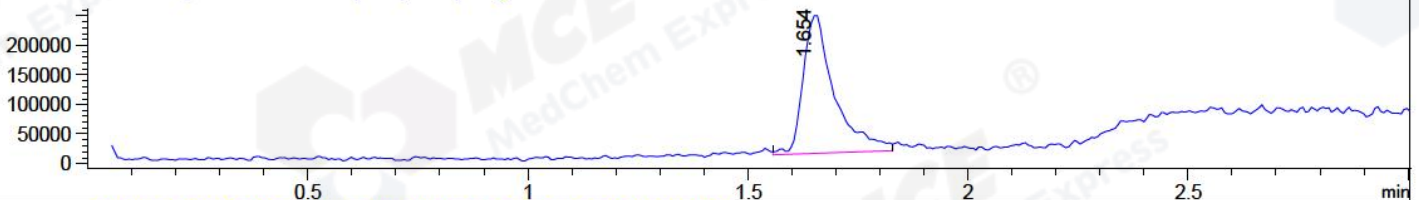
DAD1 B, Sig=214,4 Ref=off



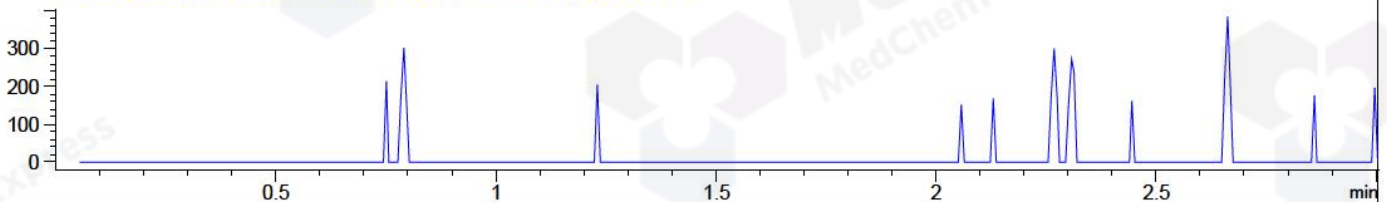
DAD1 C, Sig=254,4 Ref=off



MSD1 TIC, MS File ES-API, Pos, Scan, Frag: 70



Ion 385.2, MSD1 385.2, Target Mass 384.2 +H Positive, EIC=384.9:385.9



Integration Results for DAD1 B, Sig=214,4 Ref=off

RetTim	Width	Area	Height	Area%	MS (+)
1.51	0.01	0.40	0.59	0.03	141
1.54	0.02	1202.03	739.12	99.97	367

Integration Results for DAD1 C, Sig=254,4 Ref=off

RetTim	Width	Area	Height	Area%	MS (+)
1.50	0.01	0.61	0.77	0.17	141
1.54	0.03	353.09	211.81	99.83	367

Integration Results for MSD1 TIC, MS File

RetTim	Width	Area	Height	Area%	MS (+)
1.65	0.07	1157023.75	235987.44	100.00	367

Ret. Time: 1.65

<<<< POSITIVE SPECTRA >>>>

