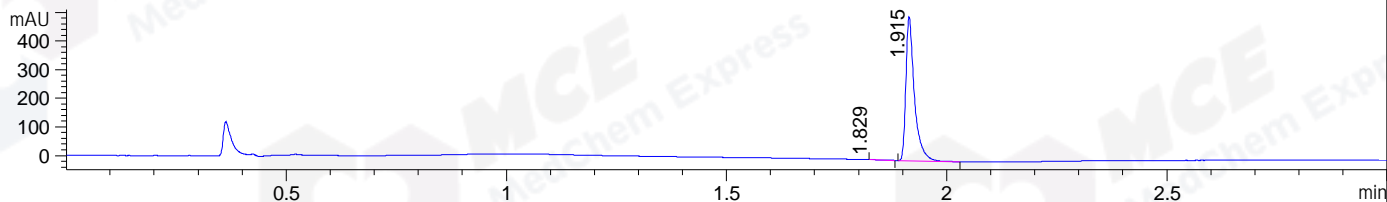
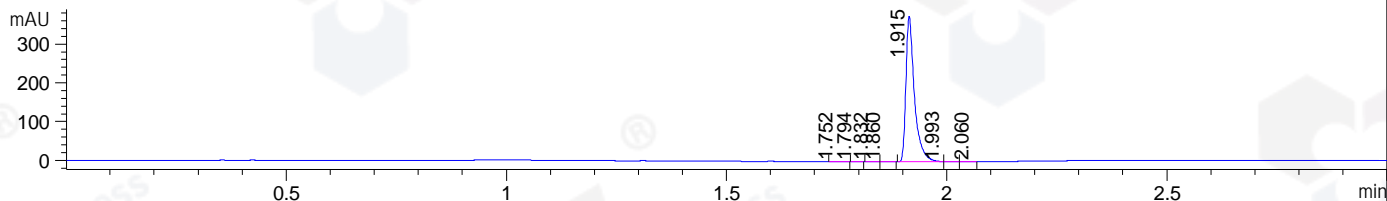


File ..019\20190702\20190702 2\BIZ2019-701-WYQ11.D Tgt Mass (CHM):
Injection Date : 2 Jul 19 7:06 pm +0800 Seq. Line : 45
Sample Name : BIZ2019-701-WYQ11 Location : P2-E-04
Acq. Operator : SYSTEM Inj : 1
Spec. Reported : MS Integration Inj Volume : 1 ul
Acq. Method : D:\LCMS03\Data\20190702\20190702 2\1-POS-3MIN.M
Analysis Method : D:\CHEM32\1\DATA\2019\20190702\20190702 2\1-POS-3MIN.M
Catalog No : HY-10230 Batch#42841
Method Info : Mobile Phase: A: water(0.01%TFA) B:ACN(0.01%TFA)
Gradient: 5% to 95%B within 1.3 min
Flow Rate :1.8ml/min
Column :SunFire C18, 4.6*50mm,3.5um A-RP-446
Oven Temperature : 45C

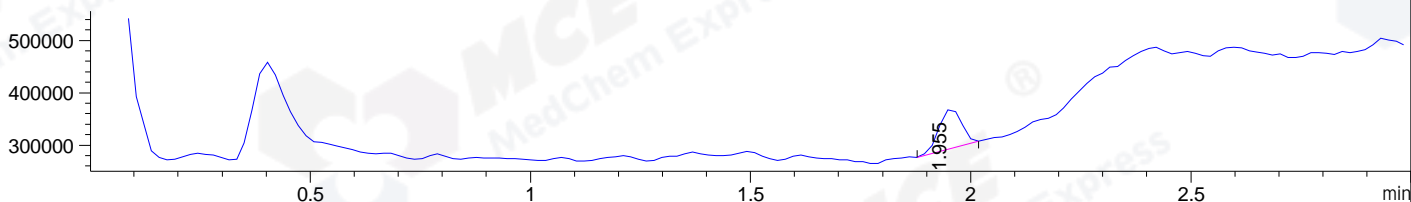
DAD1 A, Sig=214,4 Ref=off



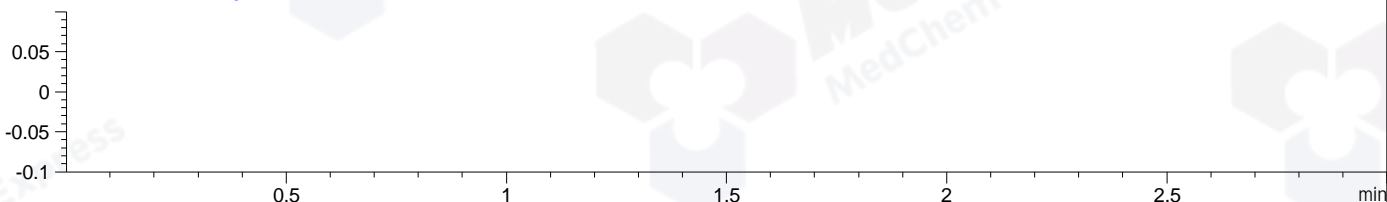
DAD1 B, Sig=254,4 Ref=off



MSD1 TIC, MS File ES-API, Pos, Scan, Frag: 70



Ion 1, MSD1 1, Target Mass 0 +H Positive, EIC=0.7:1.7



Integration Results for DAD1 A, Sig=214,4 Ref=off

| RetTim | Width | Area | Height | Area% | MS (+) |
|--------|-------|--------|--------|-------|--------|
| 1.83 | 0.04 | 0.75 | 0.27 | 0.11 | 145 |
| 1.91 | 0.02 | 677.99 | 503.24 | 99.89 | 145 |

Integration Results for DAD1 B, Sig=254,4 Ref=off

| RetTim | Width | Area | Height | Area% | MS (+) |
|--------|-------|--------|--------|-------|--------|
| 1.75 | 0.02 | 0.53 | 0.36 | 0.10 | 145 |
| 1.79 | 0.01 | 0.24 | 0.27 | 0.05 | 145 |
| 1.83 | 0.01 | 0.29 | 0.31 | 0.06 | 145 |
| 1.86 | 0.02 | 0.25 | 0.24 | 0.05 | 145 |
| 1.91 | 0.02 | 507.12 | 376.49 | 99.56 | 145 |
| 1.99 | 0.02 | 0.80 | 0.78 | 0.16 | 145 |
| 2.06 | 0.02 | 0.11 | 0.07 | 0.02 | 145 |

Integration Results for MSD1 TIC, MS File

| RetTim | Width | Area | Height | Area% | MS (+) |
|--------|-------|------|--------|-------|--------|
|--------|-------|------|--------|-------|--------|

1.95 0.06 271833.06 76401.07 100.00 145

Ret. Time: 1.95

<<<< POSITIVE SPECTRA >>>>

ES-API Positive

