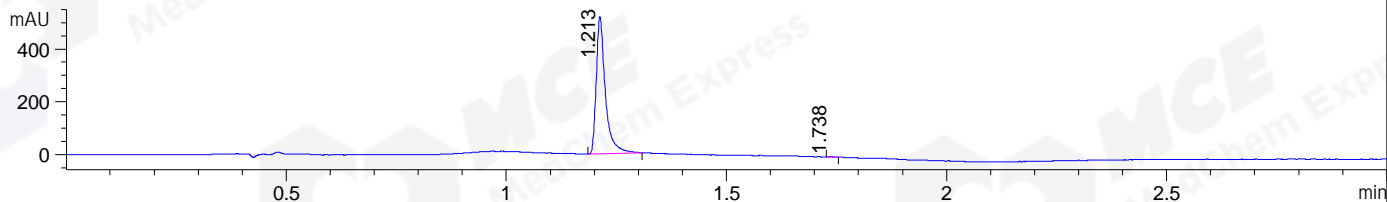
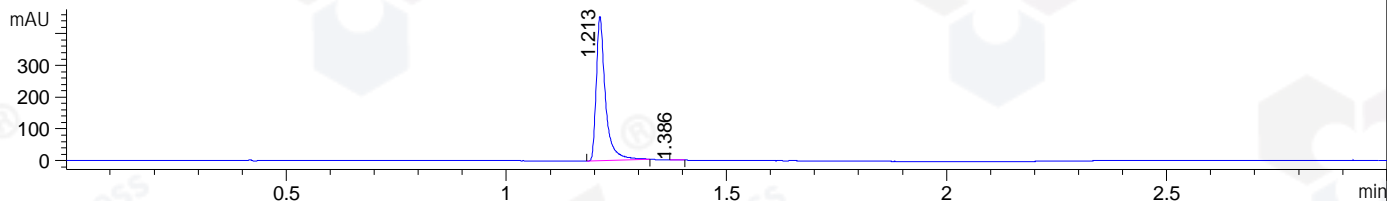


File ..DATA\2020\20200319\880\CPK2020-318-22369-.D Tgt Mass (CHM):  
Injection Date : 19 Mar 20 3:39 pm +0800 Seq. Line : 82  
Sample Name : CPK2020-318-22369 Location : P1-C-04  
Acq. Operator : ZJ\_1432 Inj : 1  
Spec. Reported : MS Integration Inj Volume : 0.5 ul  
Acq. Method : D:\Chem32\1\data\2020\20200319\880\1-POS-3MIN.M  
Analysis Method : D:\CHEM32\1\DATA\2020\20200319\880\1-POS-3MIN.M  
Catalog No : HY-10234 Batch#22369  
Method Info : Mobile Phase: A: water(0.01%TFA) B:ACN(0.01%TFA)  
Gradient: 5% to 95%B within 1.3 min  
Flow Rate :1.8ml/min  
Column :SunFire C18, 4.6\*50mm,3.5um A-RP-433  
Oven Temperature : 45□

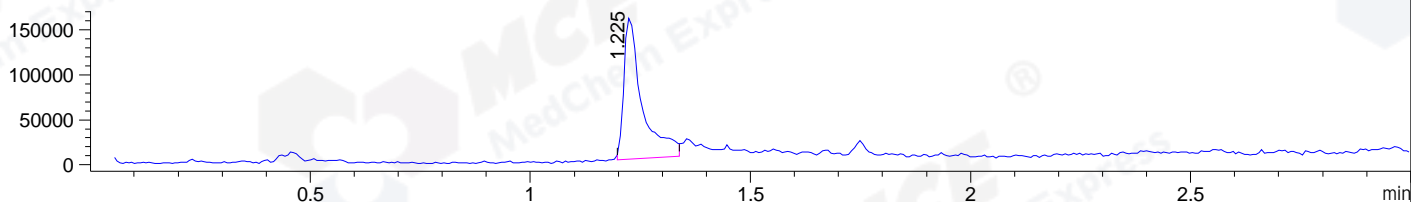
DAD1 B, Sig=214,4 Ref=off



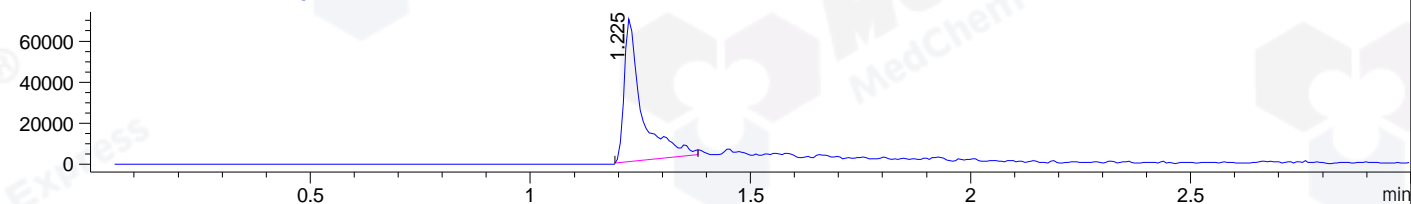
DAD1 C, Sig=254,4 Ref=off



MSD1 TIC, MS File ES-API, Pos, Scan, Frag: 70



Ion 542, MSD1 542, Target Mass 541 +H Positive, EIC=541.7:542.7



## Integration Results for DAD1 B, Sig=214,4 Ref=off

RetTim	Width	Area	Height	Area%	MS (+)
1.21	0.02	748.50	520.55	99.76	542
1.74	0.02	1.82	2.00	0.24	301

## Integration Results for DAD1 C, Sig=254,4 Ref=off

RetTim	Width	Area	Height	Area%	MS (+)
1.21	0.02	658.13	455.01	99.92	542
1.39	0.02	0.51	0.45	0.08	542

## Integration Results for MSD1 TIC, MS File

RetTim	Width	Area	Height	Area%	MS (+)
1.23	0.04	453819.09	156924.84	100.00	542

Ret. Time: 1.23

<<<< POSITIVE SPECTRA >>>>

ES-API Positive

