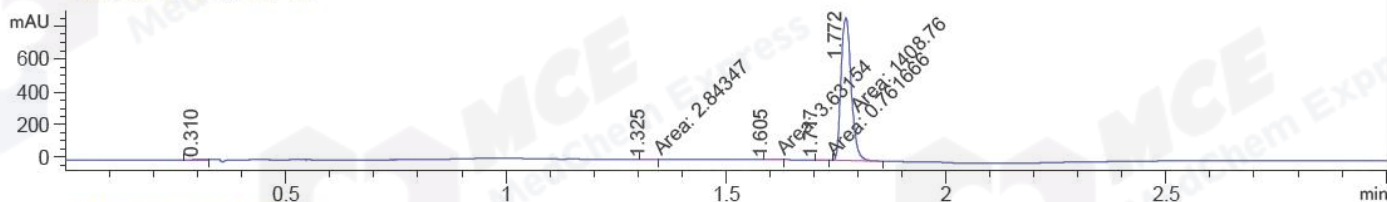
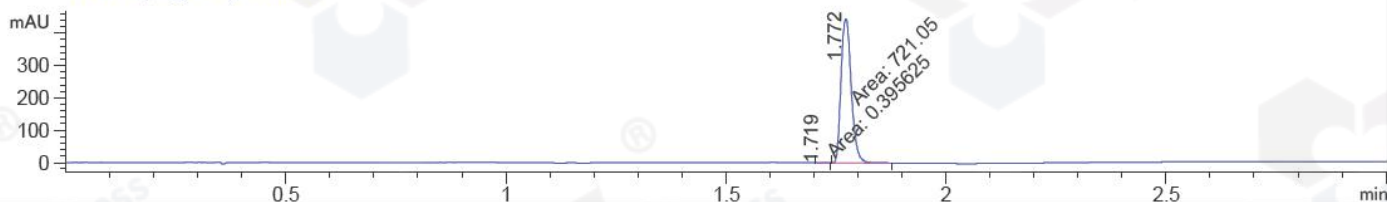


File D:\CHEM32\1\DATA\CPK\CPK2017-206-12267.D Tgt Mass (EZX): 482.20
Injection Date : 7 Feb 17 8:31 am +0800 Seq. Line : 0
Sample Name : CPK2017-206-12267 Location : P2-D-09
Acq. Operator : GZZ_718 Inj : 1
Spec. Reported : MS Integration Inj Volume : 1 ul
Acq. Method : D:\Chem32\1\METHODS\1-POS-3MIN.M
Analysis Method : D:\CHEM32\1\METHODS\1-POS-3MIN-PROSRSS.M
Catalog No : HY-10254 Batch#12267 Easy-Access Method: '1-POS-3MIN' 482.20
Method Info : Mobile Phase: A: water(0.01%TFA) B:ACN(0.01%TFA)
Gradient: 5% to 95%B within 1.3 min
Flow Rate :1.8ml/min
Column :SunFire C18, 4.6*50mm,3.5um A-RP-186
Oven Temperature : 45C

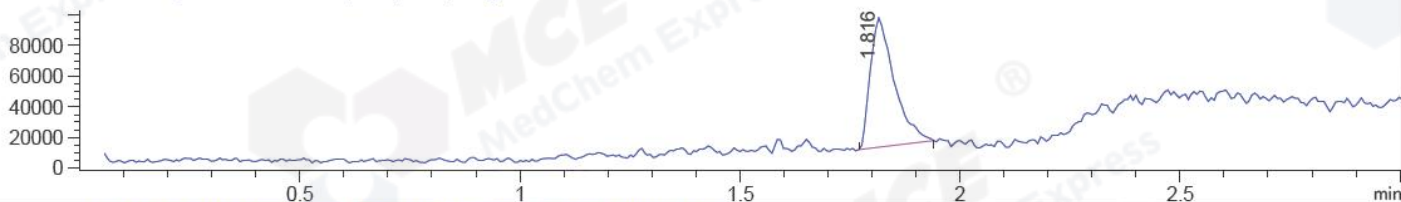
DAD1 B, Sig=214,4 Ref=off



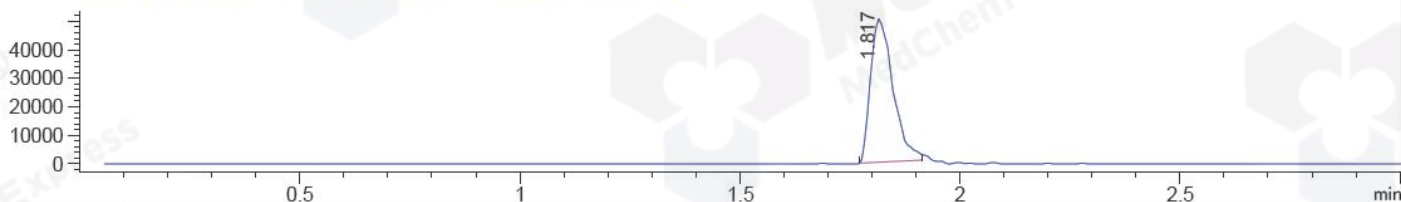
DAD1 C, Sig=254,4 Ref=off



MSD1 TIC, MS File ES-API, Pos, Scan, Frag: 70



Ion 483.2, MSD1 483.2, Target Mass 482.2 +H Positive, EIC=482.9:483.9



Integration Results for DAD1 B, Sig=214,4 Ref=off

RetTim	Width	Area	Height	Area%	MS (+)
0.31	0.03	5.16	2.69	0.36	119
1.33	0.02	2.84	2.03	0.20	233
1.60	0.02	3.63	2.58	0.26	233
1.72	0.02	0.76	0.65	0.05	233
1.77	0.03	1408.76	875.35	99.13	483

Integration Results for DAD1 C, Sig=254,4 Ref=off

RetTim	Width	Area	Height	Area%	MS (+)
1.72	0.02	0.40	0.36	0.05	233
1.77	0.03	721.05	447.60	99.95	483

Ret. Time: 1.82

<<<< POSITIVE SPECTRA >>>>

