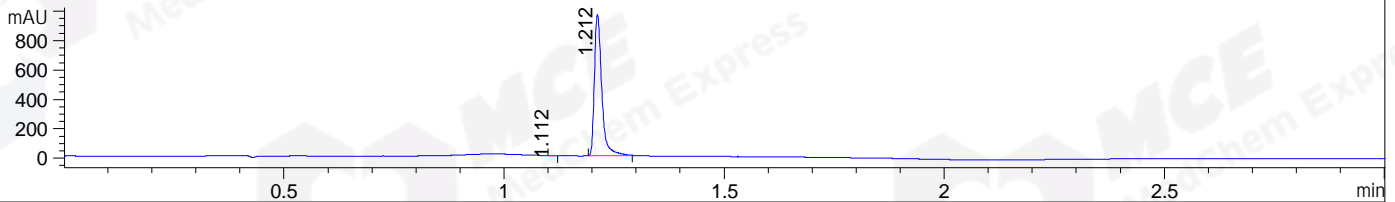
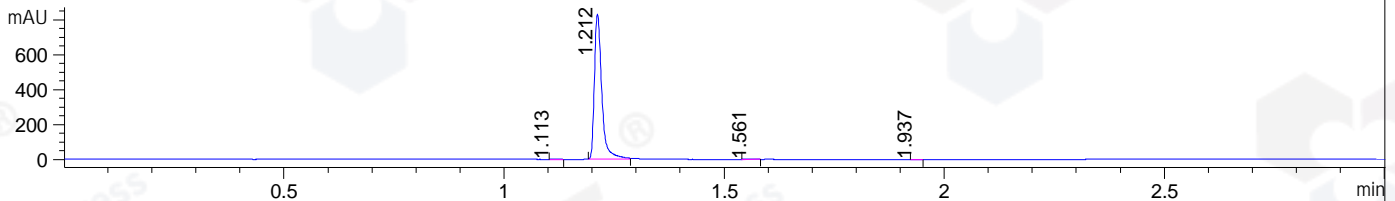


File ..\DATA\2019\20190312\563\CPK2019-312-10206.D Tgt Mass (CHM):
 Injection Date : 12 Mar 19 2:39 pm +0800 Seq. Line : 9
 Sample Name : CPK2019-312-10206 Location : P2-A-08
 Acq. Operator : LQ_1052 Inj : 1
 Spec. Reported : MS Integration Inj Volume : 1 ul
 Acq. Method : D:\Chem32\1\data\2019\20190312\563\1-POS-3MIN-1.M
 Analysis Method : D:\CHEM32\1\DATA\2019\20190312\563\1-POS-3MIN-1.M
 Catalog No : HY-10256 Batch#10206
 Method Info : Mobile Phase: A: water(0.01%TFA) B:ACN(0.01%TFA)
 Gradient: 5% to 95%B within 1.3 min
 Flow Rate :1.8ml/min
 Column :SunFire C18, 4.6*50mm,3.5um A-RP-314
 Oven Temperature : 45

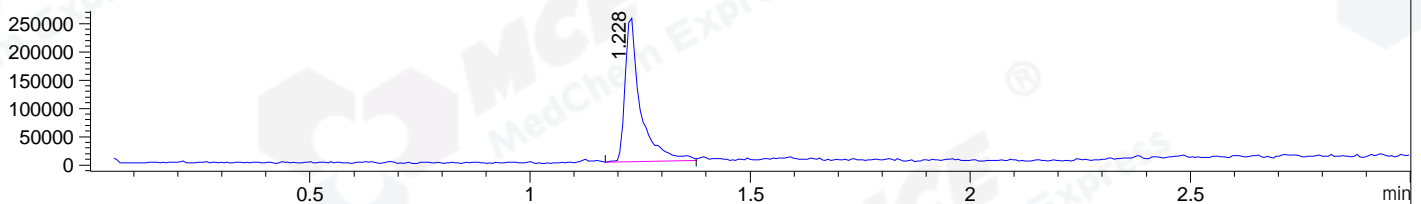
DAD1 B, Sig=214,4 Ref=off



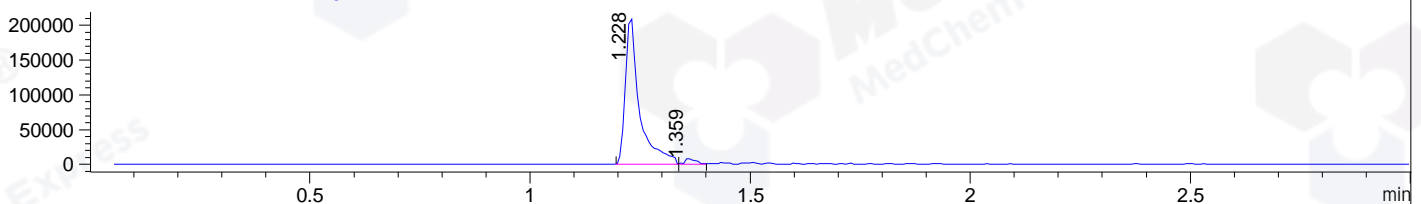
DAD1 C, Sig=254,4 Ref=off



MSD1 TIC, MS File ES-API, Pos, Scan, Frag: 70



Ion 378.4, MSD1 378.4, Target Mass 377.4 +H Positive, EIC=378.1:379.1



Integration Results for DAD1 B, Sig=214,4 Ref=off

RetTim	Width	Area	Height	Area%	MS (+)
1.11	0.01	0.93	1.10	0.08	254
1.21	0.02	1129.90	962.80	99.92	378

Integration Results for DAD1 C, Sig=254,4 Ref=off

RetTim	Width	Area	Height	Area%	MS (+)
1.11	0.02	1.04	0.98	0.11	254
1.21	0.02	971.23	830.82	99.76	378
1.56	0.03	0.73	0.47	0.07	378
1.94	0.02	0.58	0.57	0.06	ND

Integration Results for MSD1 TIC, MS File

RetTim	Width	Area	Height	Area%	MS (+)
1.23	0.04	627748.56	259088.78	100.00	378

Ret. Time: 1.23

<<<< POSITIVE SPECTRA >>>>

ES-API Positive

