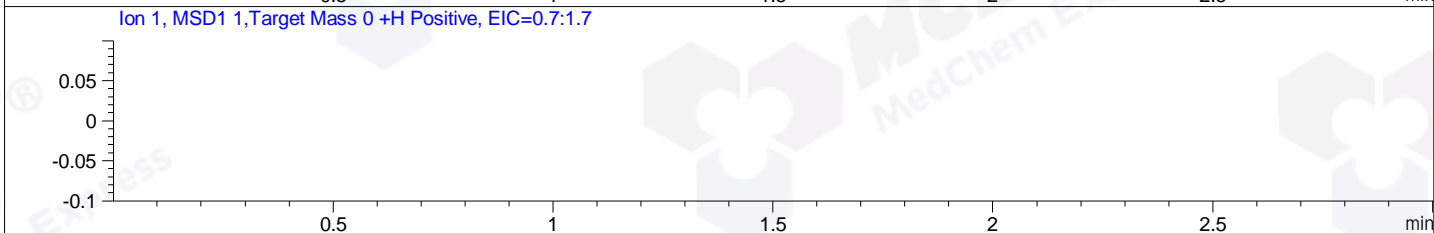
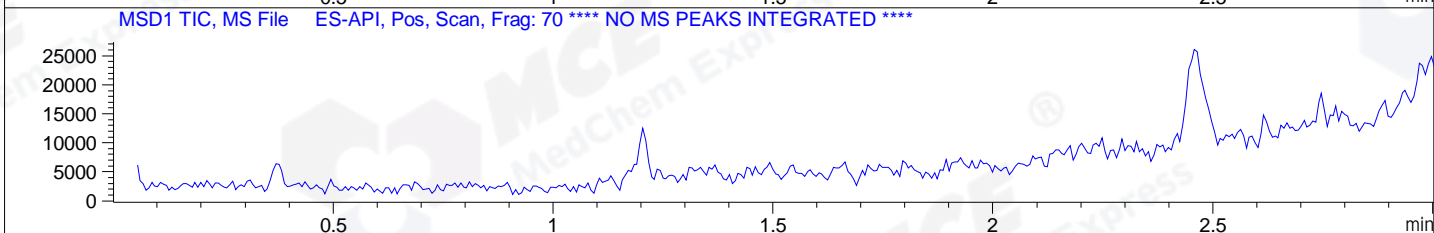
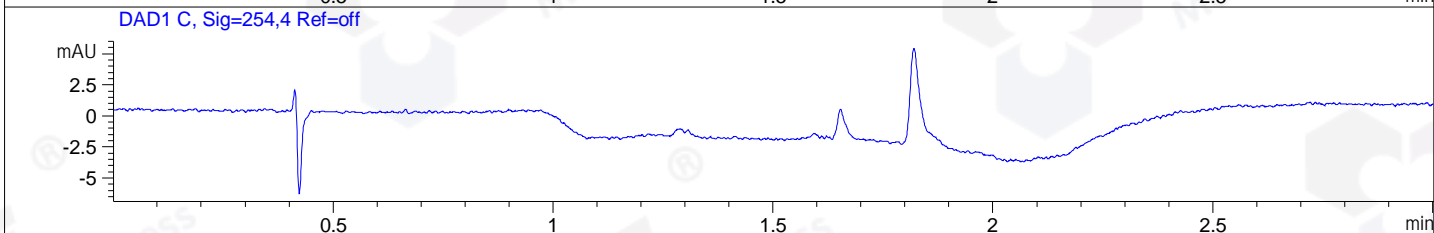
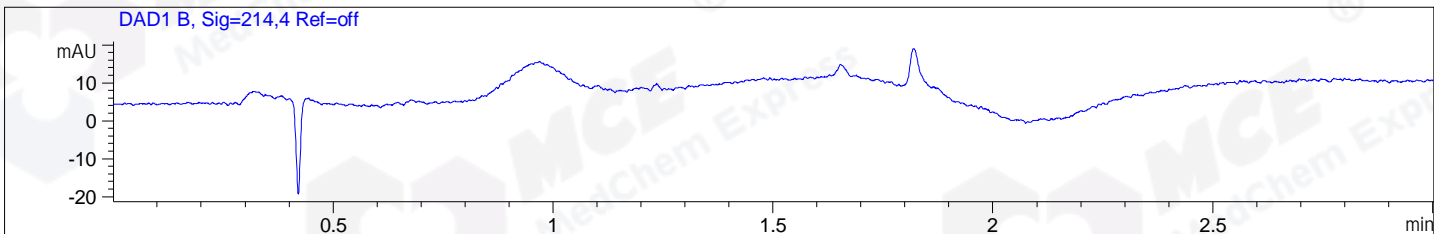


File D:\CHEM32\1\DATA\2019\20191028\742\BLANK-.D Tgt Mass (CHM):  
 Injection Date : 28 Oct 19 9:23 am +0800 Seq. Line : 6  
 Sample Name : BLANK Location : P1-F-07  
 Acq. Operator : ZJ\_1432 Inj : 1  
 Spec. Reported : MS Integration Inj Volume : 1 ul  
 Acq. Method : D:\Chem32\1\data\2019\20191028\742\1-POS-3MIN.M  
 Analysis Method : D:\CHEM32\1\DATA\2019\20191028\742\1-POS-3MIN.M  
 Catalog No : HY-10257 Batch# 23968  
 Method Info : Mobile Phase: A: water(0.01%TFA) B:ACN(0.01%TFA)  
 Gradient: 5% to 95%B within 1.3 min  
 Flow Rate :1.8ml/min  
 Column :SunFire C18, 4.6\*50mm,3.5um A-RP-433  
 Oven Temperature : 45



Integration Results for DAD1 B, Sig=214,4 Ref=off

RetTim	Width	Area	Height	Area%	MS (+)
-----	-----	-----	-----	-----	-----

Integration Results for DAD1 C, Sig=254,4 Ref=off

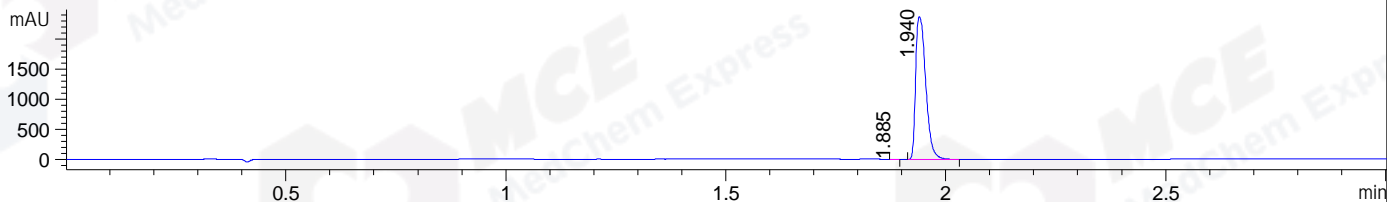
RetTim	Width	Area	Height	Area%	MS (+)
-----	-----	-----	-----	-----	-----

Integration Results for MSD1 TIC, MS File

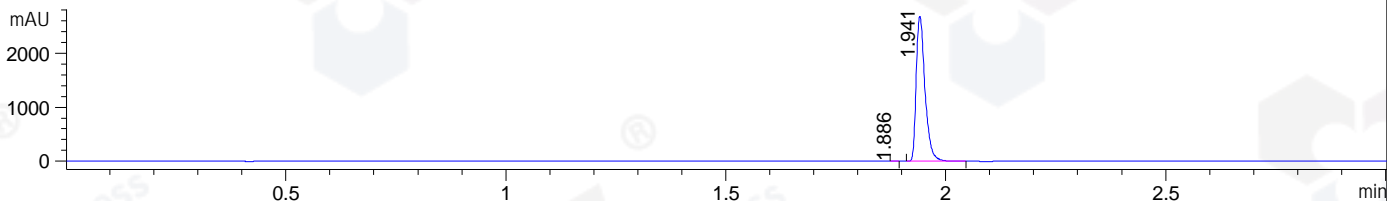
RetTim	Width	Area	Height	Area%	MS (+)
-----	-----	-----	-----	-----	-----

File ..ATA\2019\20191028\742\CPK2019-025-23968--.D Tgt Mass (CHM):  
Injection Date : 28 Oct 19 3:42 pm +0800 Seq. Line : 69  
Sample Name : CPK2019-025-23968 Location : P1-B-04  
Acq. Operator : ZJ\_1432 Inj : 1  
Spec. Reported : MS Integration Inj Volume : 2.5 ul  
Acq. Method : D:\Chem32\1\data\2019\20191028\742\1-POS-3MIN.M  
Analysis Method : D:\CHEM32\1\DATA\2019\20191028\742\1-POS-3MIN.M  
Catalog No : HY-10257 Batch# 23968  
Method Info : Mobile Phase: A: water(0.01%TFA) B:ACN(0.01%TFA)  
Gradient: 5% to 95%B within 1.3 min  
Flow Rate :1.8ml/min  
Column :SunFire C18, 4.6\*50mm,3.5um A-RP-433  
Oven Temperature : 45□

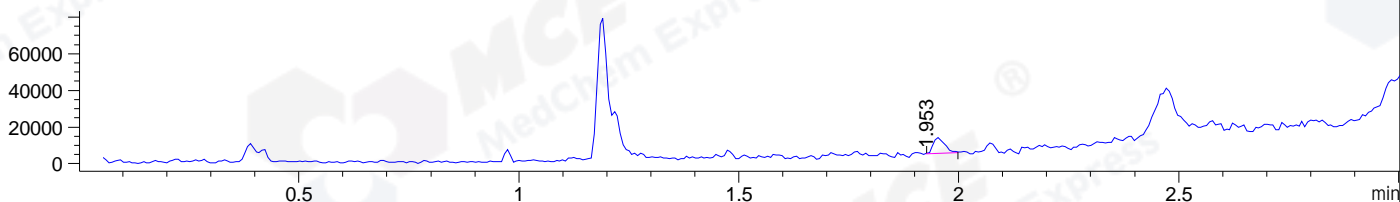
DAD1 B, Sig=214,4 Ref=off



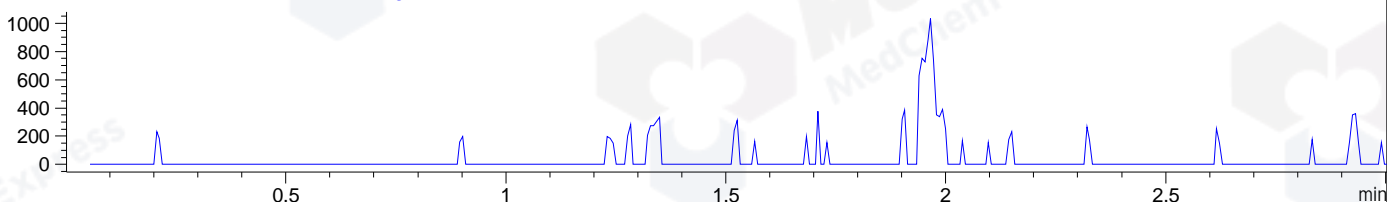
DAD1 C, Sig=254,4 Ref=off



MSD1 TIC, MS File ES-API, Pos, Scan, Frag: 70



Ion 250.08235, MSD1 250.08235, Target Mass 249.08235 +H Positive, EIC=249.78:250.78



## Integration Results for DAD1 B, Sig=214,4 Ref=off

RetTim	Width	Area	Height	Area%	MS (+)
1.88	0.01	0.80	1.12	0.02	ND
1.94	0.03	3782.42	2372.78	99.98	ND

## Integration Results for DAD1 C, Sig=254,4 Ref=off

RetTim	Width	Area	Height	Area%	MS (+)
1.89	0.01	0.24	0.40	0.01	ND
1.94	0.02	3748.39	2688.07	99.99	ND

## Integration Results for MSD1 TIC, MS File

RetTim	Width	Area	Height	Area%	MS (+)
1.95	0.03	15751.70	8672.87	100.00	ND

MS Spectrum

MSD1 SPC, time=1.940 of D:\CHEM32\1\DATA\2019\20191028\742\CPK2019-O25-23968--.D ES-API, Pos, Scan, Frag: 70

