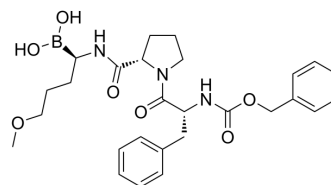


## Flovagatran

Cat. No.:	HY-10270
CAS No.:	871576-03-3
Molecular Formula:	C <sub>27</sub> H <sub>36</sub> BN <sub>3</sub> O <sub>7</sub>
Molecular Weight:	525.4
Target:	Thrombin
Pathway:	Metabolic Enzyme/Protease
Storage:	Please store the product under the recommended conditions in the Certificate of Analysis.



### BIOLOGICAL ACTIVITY

<b>Description</b>	Flovagatran (TGN 255) is a potent and reversible thrombin inhibitor (K <sub>i</sub> : 9 nM). Flovagatran can be used in the research of arterial and venous thrombosis <sup>[1]</sup> .								
<b>In Vivo</b>	<p>Flovagatran (2.5-mg/kg bolus plus 10 mg/kg/h for 90 minutes) produces anticoagulation effects in dogs<sup>[1]</sup>. MCE has not independently confirmed the accuracy of these methods. They are for reference only.</p> <table border="1"> <tr> <td>Animal Model:</td> <td>Chicks<sup>[1]</sup></td> </tr> <tr> <td>Dosage:</td> <td>1.0-mg/kg bolus and then 4 mg/kg/h for 90 minutes. 2.5-mg/kg bolus and then 10 mg/kg/h for 90 minutes. 5.0-mg/kg bolus and then 20 mg/kg/h for 90 minutes.</td> </tr> <tr> <td>Administration:</td> <td>Bolus plus infusion</td> </tr> <tr> <td>Result:</td> <td>Elevated PD markers, and produced minimal post-operative blood loss.</td> </tr> </table>	Animal Model:	Chicks <sup>[1]</sup>	Dosage:	1.0-mg/kg bolus and then 4 mg/kg/h for 90 minutes. 2.5-mg/kg bolus and then 10 mg/kg/h for 90 minutes. 5.0-mg/kg bolus and then 20 mg/kg/h for 90 minutes.	Administration:	Bolus plus infusion	Result:	Elevated PD markers, and produced minimal post-operative blood loss.
Animal Model:	Chicks <sup>[1]</sup>								
Dosage:	1.0-mg/kg bolus and then 4 mg/kg/h for 90 minutes. 2.5-mg/kg bolus and then 10 mg/kg/h for 90 minutes. 5.0-mg/kg bolus and then 20 mg/kg/h for 90 minutes.								
Administration:	Bolus plus infusion								
Result:	Elevated PD markers, and produced minimal post-operative blood loss.								

### REFERENCES

[1]. Nelson DA, et al. Pharmacodynamic and efficacy profile of TGN 255, a novel direct thrombin inhibitor, in canine cardiopulmonary bypass and simulated mitral valve repair. J Extra Corpor Technol. 2008 Jun;40(2):116-22.

**Caution: Product has not been fully validated for medical applications. For research use only.**

Tel: 609-228-6898

Fax: 609-228-5909

E-mail: tech@MedChemExpress.com

Address: 1 Deer Park Dr, Suite Q, Monmouth Junction, NJ 08852, USA