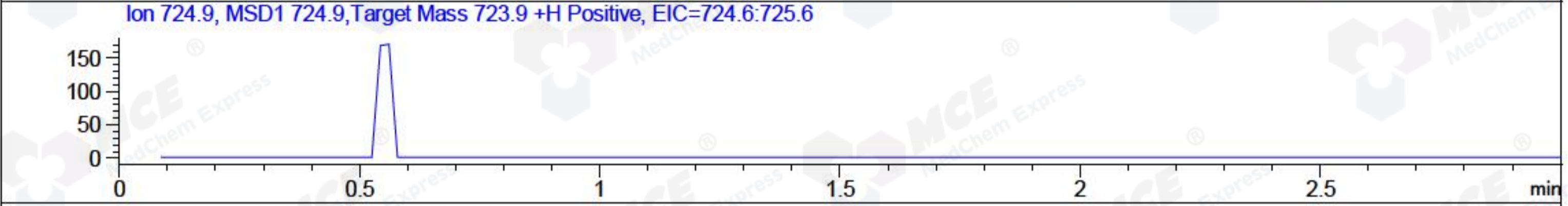
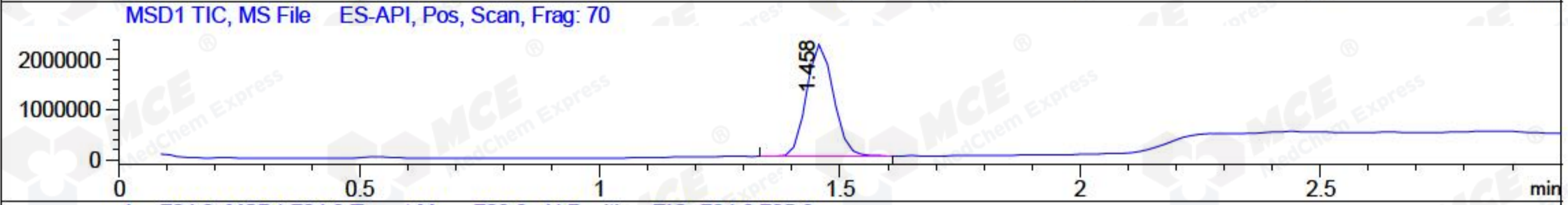
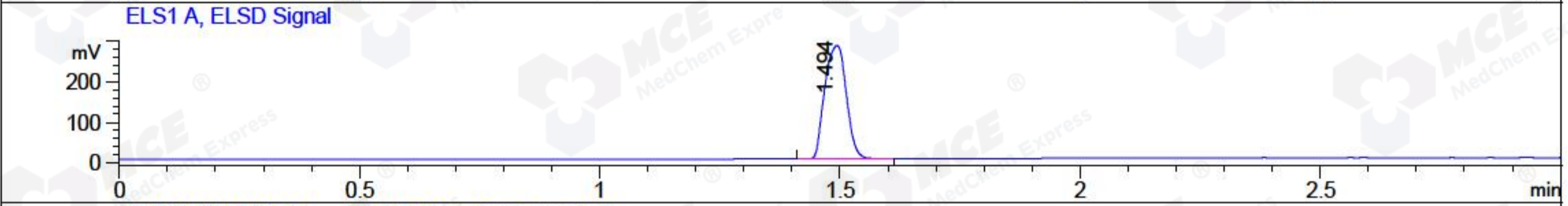
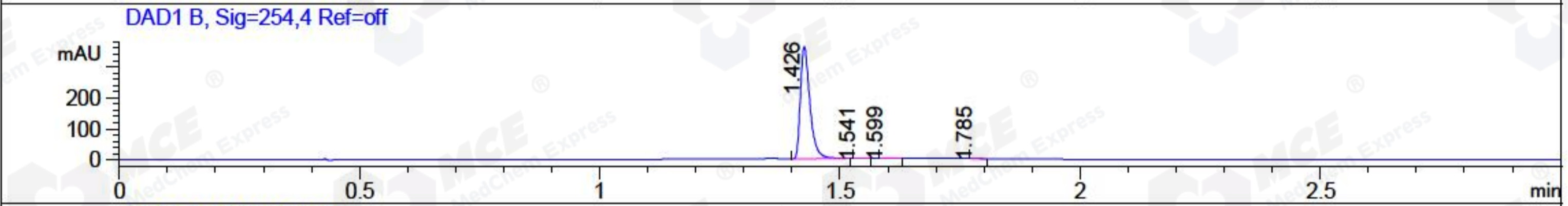
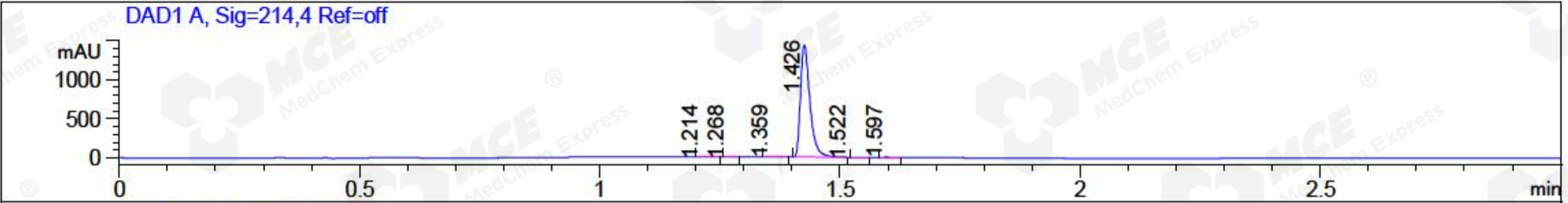


File ..\Data\20180111\20180111\CPK2018-111-10862.D Tgt Mass (CHM):
 Injection Date : 11 Jan 18 7:36 pm +0800 Seq. Line : 128
 Sample Name : CPK2018-111-10862 Location : P2-F-05
 Acq. Operator : SYSTEM Inj : 1
 Spec. Reported : MS Integration Inj Volume : 1 ul
 Acq. Method : D:\LCMS03\Data\20180111\20180111\1-POS-3MIN.M
 Analysis Method : D:\LCMS03\Data\20180111\20180111\1-POS-3MIN.M
 Catalog No : HY-10274A Batch#10862
 Method Info : Mobile Phase: A: water(0.01%TFA) B:ACN(0.01%TFA)
 Gradient: 5% to 95%B within 1.3 min
 Flow Rate :1.8ml/min
 Column :SunFire C18, 4.6*50mm,3.5um A-RP-186
 Oven Temperature : 45C



Integration Results for DAD1 A, Sig=214,4 Ref=off

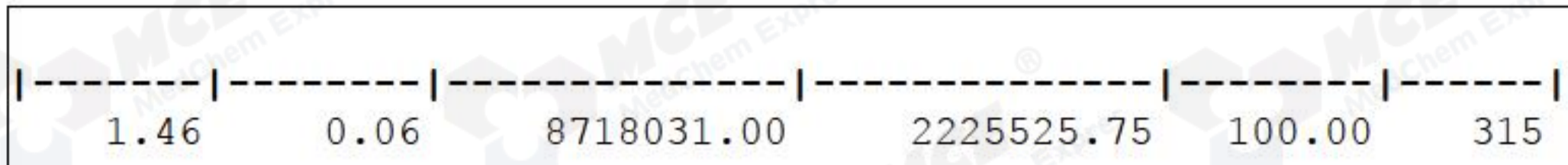
RetTim	Width	Area	Height	Area%	MS (+)
1.21	0.02	0.98	0.74	0.05	174
1.27	0.02	0.63	0.57	0.03	174
1.36	0.02	5.70	4.92	0.29	174
1.43	0.02	1947.07	1429.55	99.40	315
1.52	0.02	0.75	0.50	0.04	315
1.60	0.02	3.78	3.85	0.19	105

Integration Results for DAD1 B, Sig=254,4 Ref=off

RetTim	Width	Area	Height	Area%	MS (+)
1.43	0.02	495.05	361.03	99.60	315
1.54	0.02	0.16	0.14	0.03	315
1.60	0.02	1.57	1.23	0.32	105
1.78	0.02	0.24	0.19	0.05	105

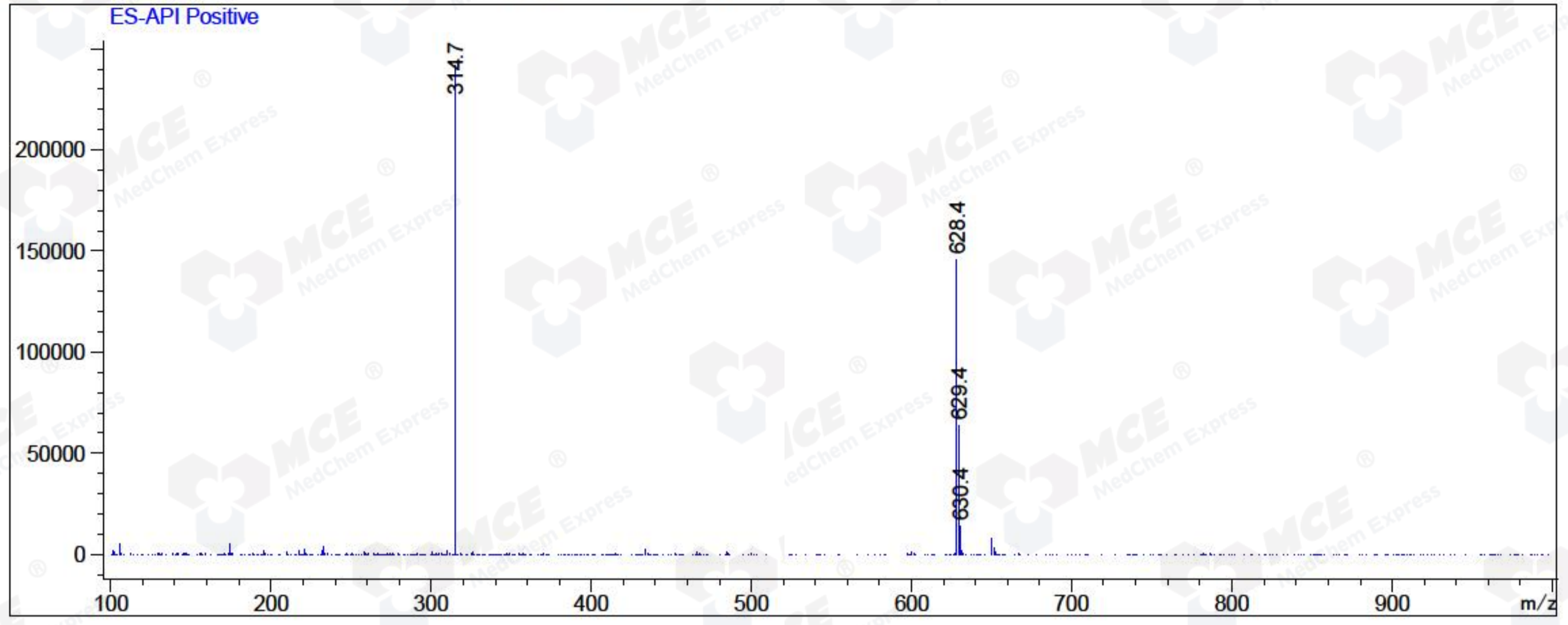
Integration Results for MSD1 TIC, MS File

RetTim	Width	Area	Height	Area%	MS (+)
--------	-------	------	--------	-------	--------



Ret. Time: 1.46

<<<< POSITIVE SPECTRA >>>>



*** End of Report ***