

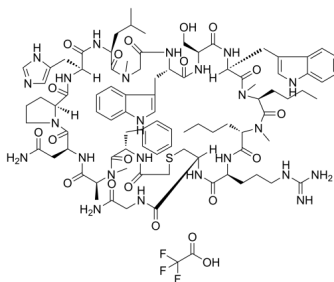
## PD-1/PD-L1-IN 3 (TFA)

Cat. No.: HY-103048A  
Batch No.: 252107  
Molecular Formula: C<sub>91</sub>H<sub>127</sub>F<sub>3</sub>N<sub>24</sub>O<sub>20</sub>S

### ANALYTICAL DATA

Theoretical: C(-), H(-), N(-), Peptide Content(≥60.0%)  
Result: C(49.62%), H(5.84%), N(15.69%), Peptide Content(86.40%)

Chemical Structure:



**Caution: Product has not been fully validated for medical applications. For research use only.**

Tel: 609-228-6898

Fax: 609-228-5909

E-mail: [tech@MedChemExpress.com](mailto:tech@MedChemExpress.com)

Address: 1 Deer Park Dr, Suite Q, Monmouth Junction, NJ 08852, USA