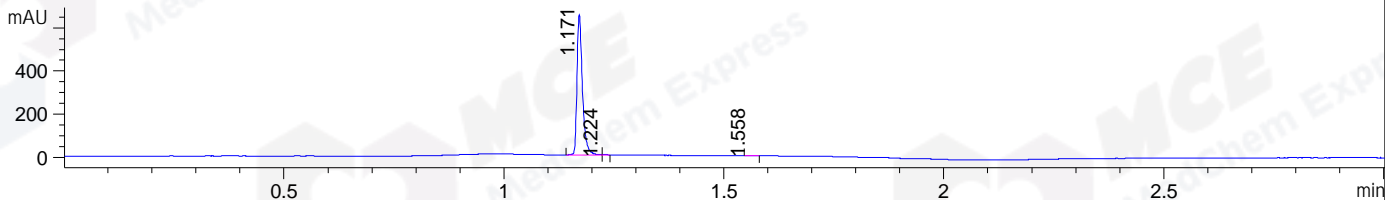
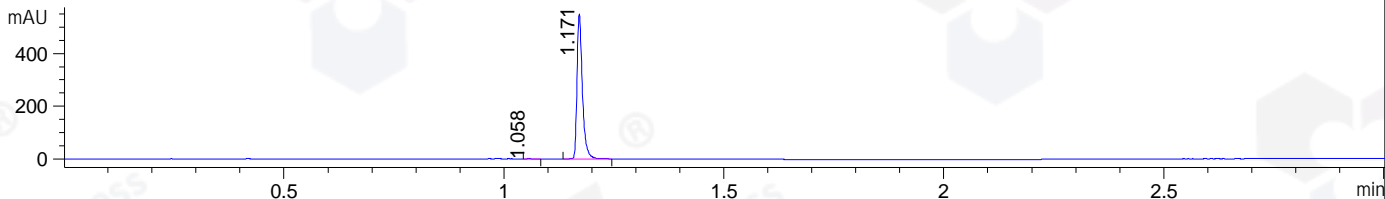


File ..\DATA\2020\20200514\959\BIZ2020-513-CXL5.D Tgt Mass (CHM):
 Injection Date : 14 May 20 4:11 pm +0800 Seq. Line : 85
 Sample Name : BIZ2020-513-CXL5 Location : P1-C-06
 Acq. Operator : ZJ_1432 Inj : 1
 Spec. Reported : MS Integration Inj Volume : 0.25 ul
 Acq. Method : D:\Chem32\1\data\2020\20200514\959\1-POS-3MIN.M
 Analysis Method : D:\CHEM32\1\DATA\2020\20200514\959\1-POS-3MIN.M
 Catalog No : HY-103129
 Method Info : Mobile Phase: A: water(0.01%TFA) B:ACN(0.01%TFA)
 Gradient: 5% to 95%B within 1.3 min
 Flow Rate :1.8ml/min
 Column :SunFire C18, 4.6*50mm,3.5um A-RP-607
 Oven Temperature : 45□

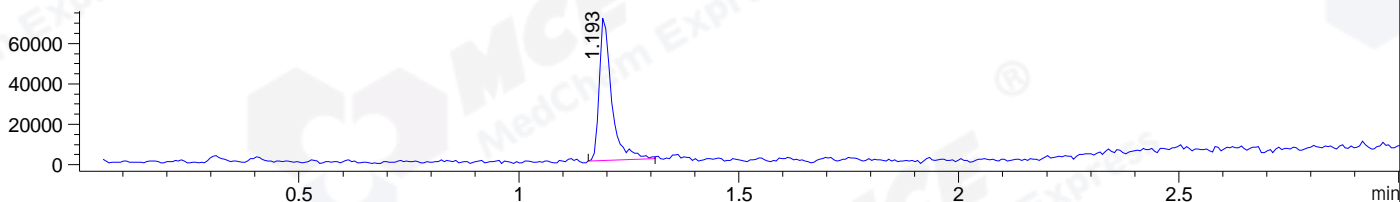
DAD1 B, Sig=214,4 Ref=off



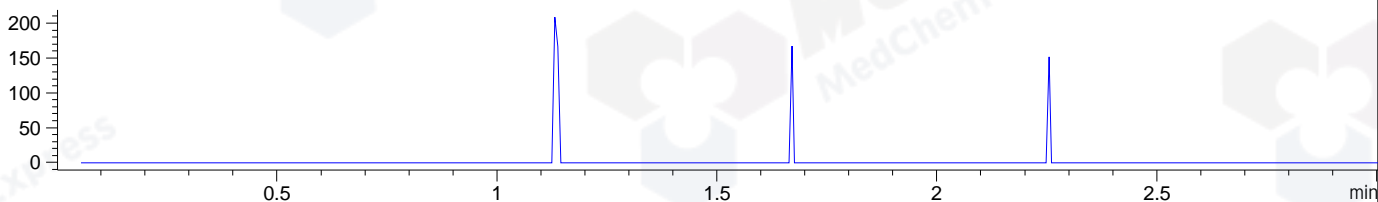
DAD1 C, Sig=254,4 Ref=off



MSD1 TIC, MS File ES-API, Pos, Scan, Frag: 70



Ion 303, MSD1 303, Target Mass 302 +H Positive, EIC=302.7:303.7



Integration Results for DAD1 B, Sig=214,4 Ref=off

RetTim	Width	Area	Height	Area%	MS (+)
1.17	0.01	557.48	652.60	99.47	267
1.22	0.01	1.31	1.84	0.23	267
1.56	0.02	1.66	1.65	0.30	ND

Integration Results for DAD1 C, Sig=254,4 Ref=off

RetTim	Width	Area	Height	Area%	MS (+)
1.06	0.01	0.61	0.74	0.13	ND
1.17	0.01	464.71	547.51	99.87	267

Integration Results for MSD1 TIC, MS File

RetTim	Width	Area	Height	Area%	MS (+)
1.19	0.03	139266.52	71812.63	100.00	267

Ret. Time: 1.19

<<<< POSITIVE SPECTRA >>>>

ES-API Positive

