

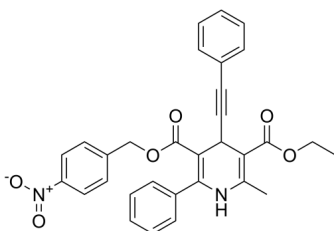
**MRS1334**

Cat. No.: HY-103174  
Batch No.: 253803  
CAS No.: 192053-05-7  
Molecular Formula: C<sub>31</sub>H<sub>26</sub>N<sub>2</sub>O<sub>6</sub>

**ANALYTICAL DATA**

Theoretical: C(71.25%)、H(5.01%)、N(5.36%)  
Result: C(71.13%)、H(5.05%)、N(5.32%)

Chemical Structure:



Caution: Product has not been fully validated for medical applications. For research use only.

Tel: 609-228-6898

Fax: 609-228-5909

E-mail: [tech@MedChemExpress.com](mailto:tech@MedChemExpress.com)

Address: 1 Deer Park Dr, Suite Q, Monmouth Junction, NJ 08852, USA