

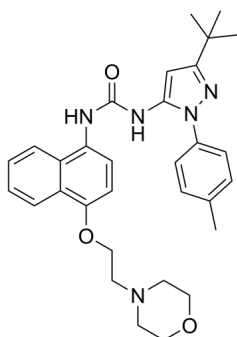
Doramapimod

Cat. No.: HY-10320
 Batch No.: 64420
 CAS No.: 285983-48-4
 Molecular Formula: $C_{31}H_{37}N_5O_3$

ANALYTICAL DATA

Theoretical: C(70.32%)、H(7.08%)、N(13.23%)
 Result: C(70.11%)、H(7.01%)、N(13.15%)

Chemical Structure:



Caution: Product has not been fully validated for medical applications. For research use only.

Tel: 609-228-6898

Fax: 609-228-5909

E-mail: tech@MedChemExpress.com

Address: 1 Deer Park Dr, Suite Q, Monmouth Junction, NJ 08852, USA