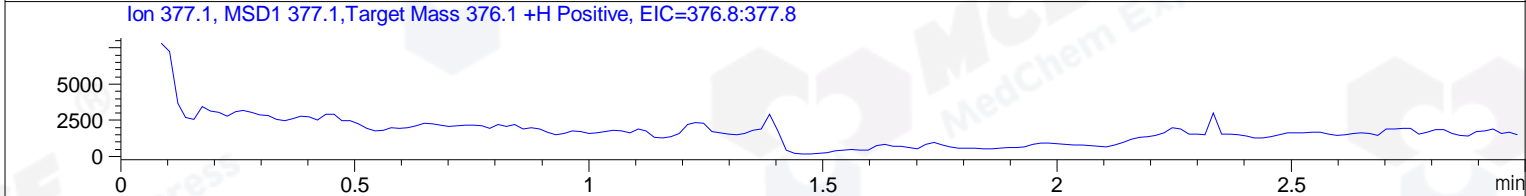
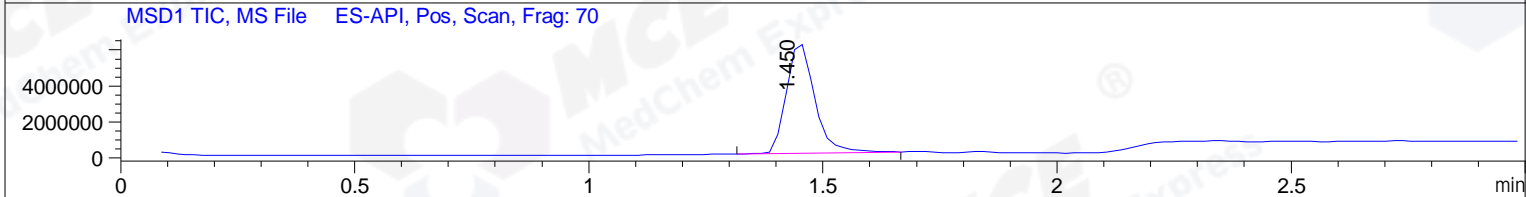
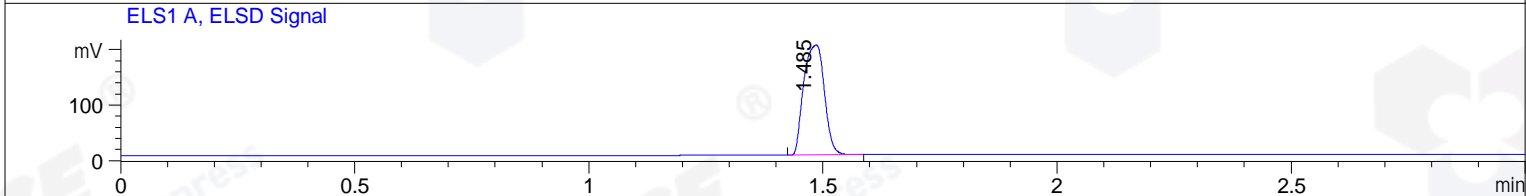
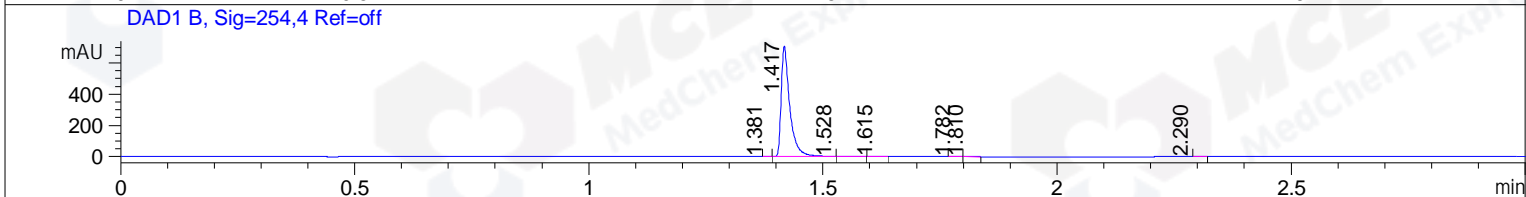
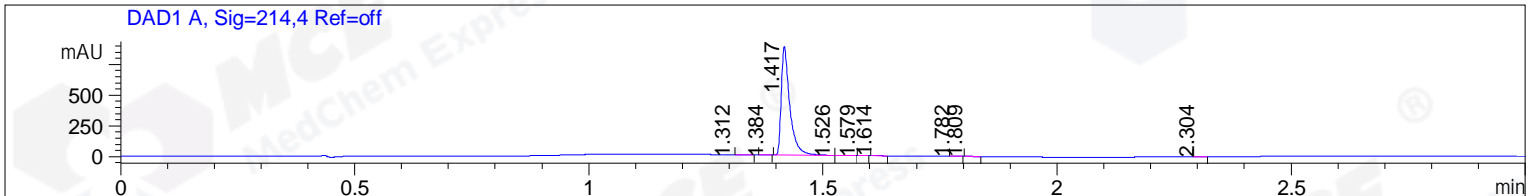


File ..ata\20171108\20171108-1\BIZ2017-N08-WYQ15.D Tgt Mass (CHM):
 Injection Date : 8 Nov 17 2:45 pm +0800 Seq. Line : 23
 Sample Name : BIZ2017-N08-WYQ15 Location : P1-E-10
 Acq. Operator : SYSTEM Inj : 1
 Spec. Reported : MS Integration Inj Volume : 1 ul
 Acq. Method : D:\LCMS03\Data\20171108\20171108-1\1-POS-3MIN.M
 Analysis Method : D:\LCMS03\Data\20171108\20171108-1\1-POS-3MIN.M
 Catalog No : HY-10321 Batch#27142
 Method Info : Mobile Phase: A: water(0.01%TFA) B:ACN(0.01%TFA)
 Gradient: 5% to 95%B within 1.3 min
 Flow Rate :1.8ml/min
 Column :SunFire C18, 4.6*50mm,3.5um A-RP-186
 Oven Temperature : 45C



Integration Results for DAD1 A, Sig=214,4 Ref=off

RetTim	Width	Area	Height	Area%	MS (+)
1.31	0.03	1.12	0.28	0.10	367
1.38	0.01	0.34	0.38	0.03	367
1.42	0.02	1122.94	883.86	99.55	524
1.53	0.02	0.83	0.67	0.07	524
1.58	0.01	0.25	0.28	0.02	524
1.61	0.01	0.90	1.04	0.08	524
1.78	0.01	0.60	0.73	0.05	367
1.81	0.01	0.38	0.43	0.03	367
2.30	0.02	0.69	0.61	0.06	367

Integration Results for DAD1 B, Sig=254,4 Ref=off

RetTim	Width	Area	Height	Area%	MS (+)
1.38	0.01	0.08	0.13	0.01	367
1.42	0.02	895.32	706.23	99.61	524
1.53	0.03	1.11	0.63	0.12	524
1.62	0.02	1.02	1.03	0.11	524
1.78	0.01	0.47	0.56	0.05	367

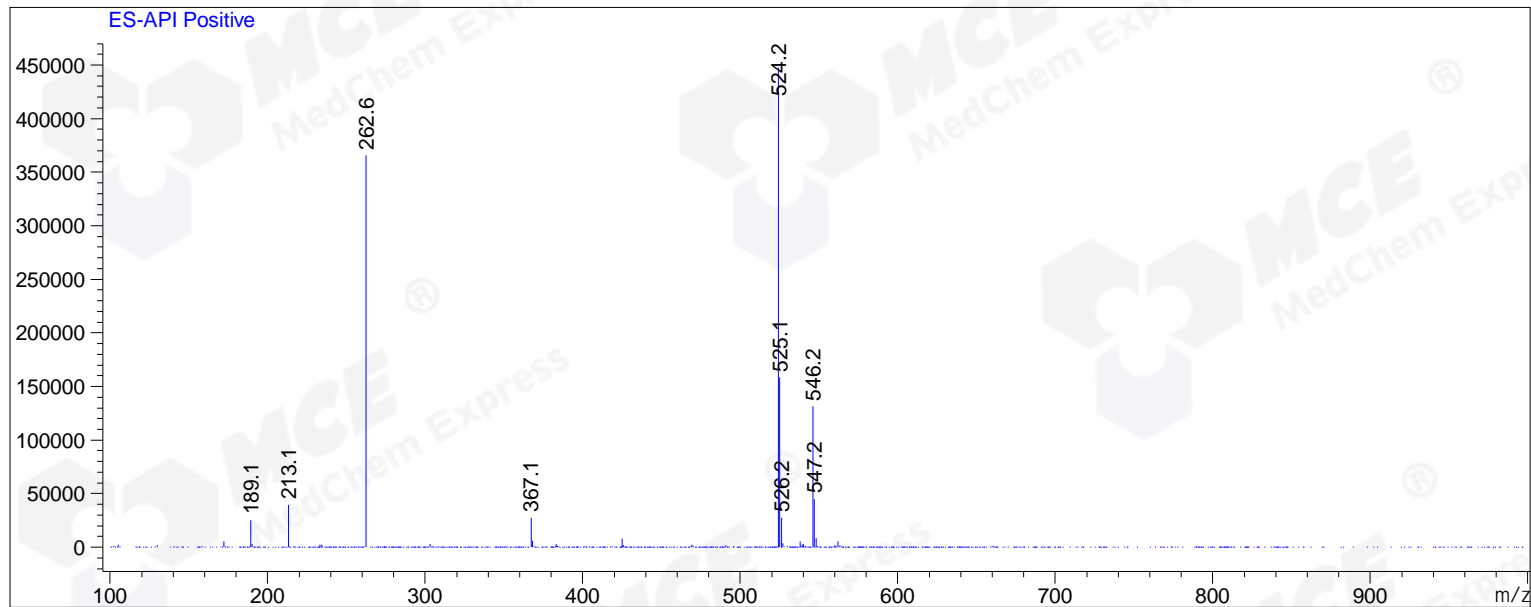
1.81	0.01	0.33	0.37	0.04	367
2.29	0.02	0.45	0.25	0.05	367

Integration Results for MSD1 TIC, MS File

RetTim	Width	Area	Height	Area%	MS(+)
1.45	0.06	25821684.00	6177787.50	100.00	524

Ret. Time: 1.45

<<<< POSITIVE SPECTRA >>>>



*** End of Report ***