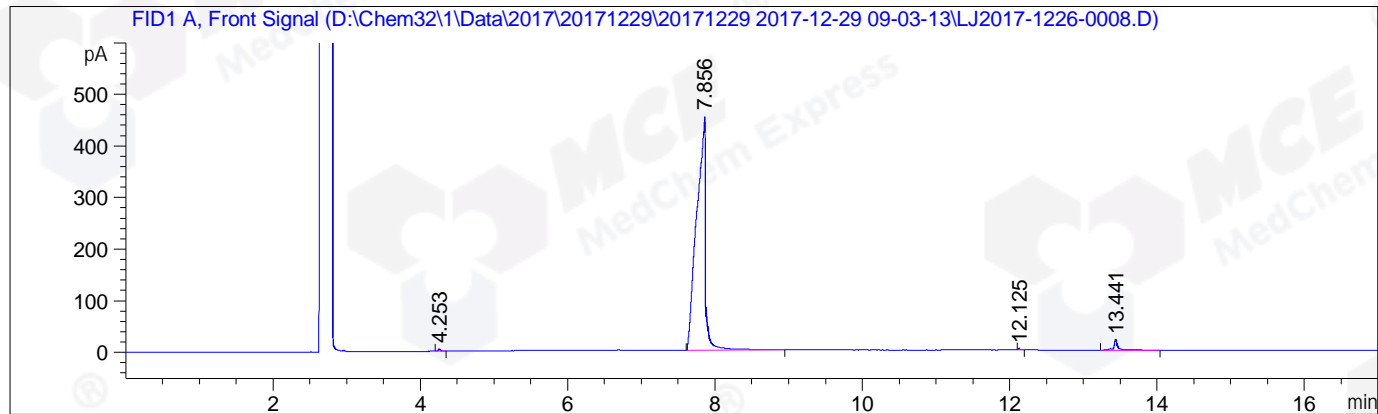


=====
Acq. Operator : LSL_985 Seq. Line : 17
Acq. Instrument : GC7890 Location : 5 (F)
Injection Date : 12/29/2017 3:02:16 PM Inj : 1
Inj Volume : 1 µl
Acq. Method : D:\Chem32\1\Data\2017\20171229\20171229 2017-12-29 09-03-13\GC-FQ.M
Last changed : 12/29/2017 9:03:13 AM by LSL_985
Analysis Method : D:\Chem32\1\Data\2017\20171229\20171229 2017-12-29 09-03-13\GC-FQ.M (Sequence Method)
Last changed : 1/2/2018 1:50:14 PM by LSL_985 (modified after loading)
Catalog No : HY-103252 (BY ACN) HP-5 A-CP-21

Additional Info : Peak(s) manually integrated



=====
Area Percent Report
=====

Sorted By : Signal
Multiplier : 1.0000
Dilution : 1.0000
Do not use Multiplier & Dilution Factor with ISTDs

Signal 1: FID1 A, Front Signal

Peak #	RetTime [min]	Type	Width [min]	Area [pA*s]	Height [pA]	Area %
1	4.253	BB	0.0301	8.51475	4.48990	0.21658
2	7.856	BB	0.1019	3840.10059	454.05981	97.67845
3	12.125	BB	0.0271	4.35820	2.36210	0.11086
4	13.441	BB	0.0540	78.39589	20.59185	1.99411
Totals :				3931.36942	481.50366	

=====
*** End of Report ***