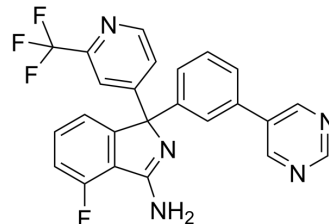


(Rac)-AZD3839

Cat. No.:	HY-103268
CAS No.:	1227163-56-5
Molecular Formula:	C ₂₄ H ₁₅ F ₄ N ₅
Molecular Weight:	449.4
Target:	Potassium Channel
Pathway:	Membrane Transporter/Ion Channel
Storage:	Please store the product under the recommended conditions in the Certificate of Analysis.



BIOLOGICAL ACTIVITY

Description

(Rac)-AZD3839 is an orally active beta-amyloid precursor protein cleaving enzyme (BACE1) inhibitor that is blood-brain barrier-permeable. (Rac)-AZD3839 has an affinity for the human ether-a-go-go related gene (hERG) ion channel. (Rac)-AZD3839 can be used in the research of Alzheimer's disease^[1].

REFERENCES

[1]. Britt-Marie Swahn, et, al. Design and synthesis of β -site amyloid precursor protein cleaving enzyme (BACE1) inhibitors with in vivo brain reduction of β -amyloid peptides. J Med Chem 2012, 55, 21.

Caution: Product has not been fully validated for medical applications. For research use only.

Tel: 609-228-6898

Fax: 609-228-5909

E-mail: tech@MedChemExpress.com

Address: 1 Deer Park Dr, Suite Q, Monmouth Junction, NJ 08852, USA