

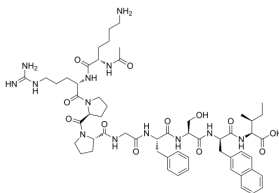
## R715

Cat. No.: HY-103290  
CAS No.: 185052-09-9  
Batch No.: 384307  
Chemical Name: L-Isoleucine, N2-acetyl-L-lysyl-L-arginyl-L-prolyl-L-prolyl-L-prolyl-L-phenylalanyl-L-seryl-3-(2-naphthalenyl)-D-alanyl-

### PHYSICAL AND CHEMICAL PROPERTIES

Molecular Formula:  $C_{57}H_{81}N_{13}O_{12}$   
Molecular Weight: 1140.33  
Storage: Sealed storage, away from moisture  
Powder -80°C 2 years  
-20°C 1 year  
\* In solvent : -80°C, 6 months; -20°C, 1 month (sealed storage, away from moisture)

### Chemical Structure:



### ANALYTICAL DATA

Appearance: White to off-white (Solid)  
LCMS: Consistent with structure  
Purity (LCMS): 99.45%  
Conclusion: The product has been tested and complies with the given specifications.

**Caution: Product has not been fully validated for medical applications. For research use only.**

Tel: 609-228-6898

Fax: 609-228-5909

E-mail: tech@MedChemExpress.com

Address: 1 Deer Park Dr, Suite Q, Monmouth Junction, NJ 08852, USA