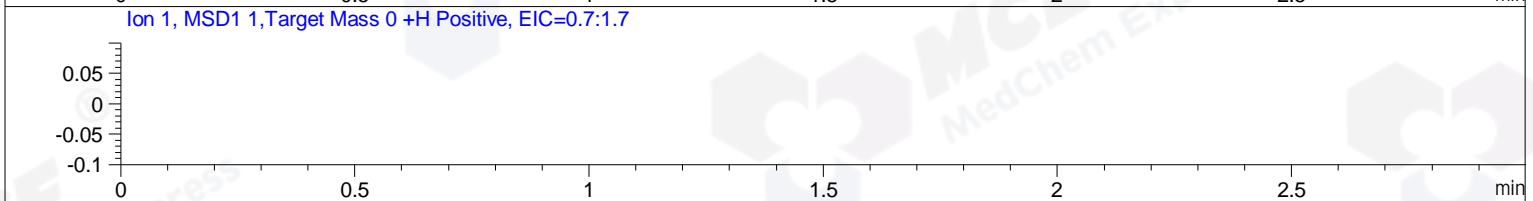
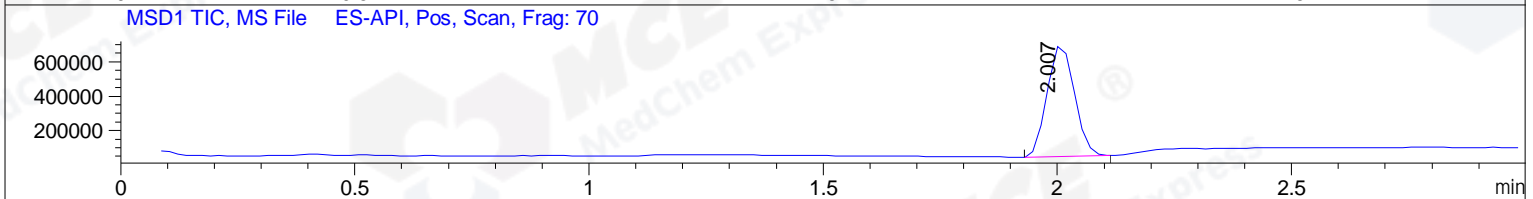
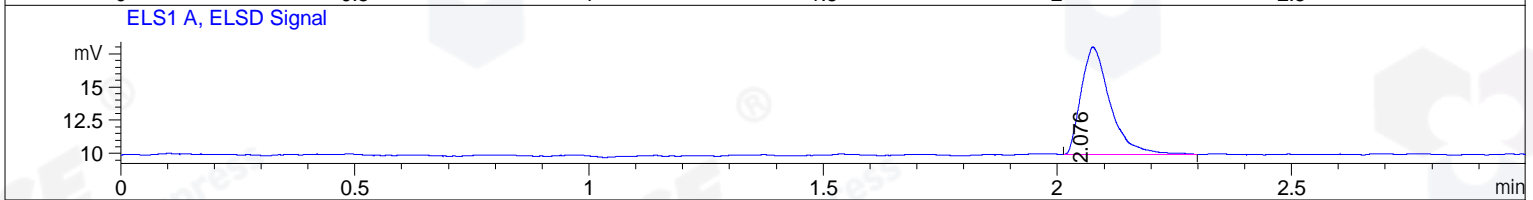
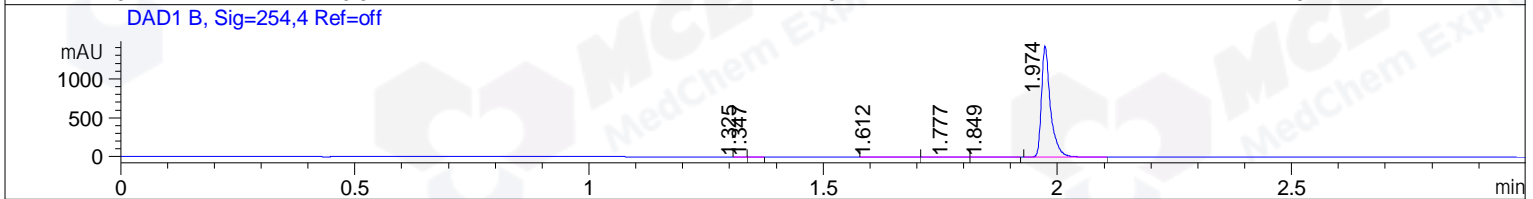
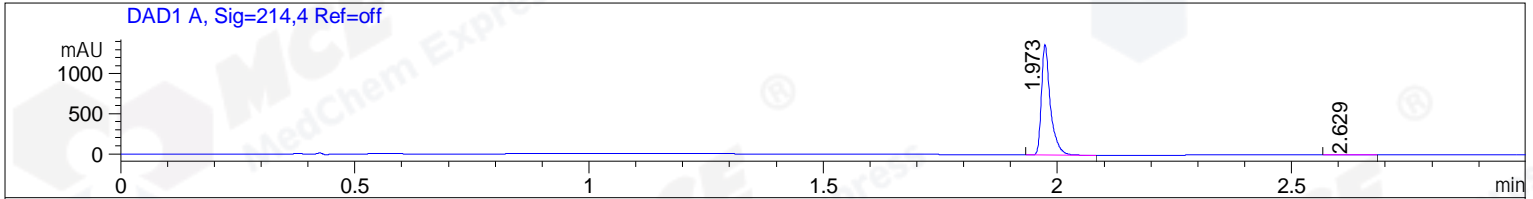


File ..\Data\20190321\20190321\CPK2019-320-22215.D Tgt Mass (CHM):  
 Injection Date : 21 Mar 19 12:20 pm +0800 Seq. Line : 42  
 Sample Name : CPK2019-320-22215 Location : P2-E-05  
 Acq. Operator : SYSTEM Inj : 1  
 Spec. Reported : MS Integration Inj Volume : 1 ul  
 Acq. Method : D:\LCMS03\Data\20190321\20190321\1-POS-3MIN.M  
 Analysis Method : D:\LCMS03\Data\20190321\20190321\1-POS-3MIN.M  
 Catalog No : HY-10331 Batch#22215  
 Method Info : Mobile Phase: A: water(0.01%TFA) B:ACN(0.01%TFA)  
 Gradient: 5% to 95%B within 1.3 min  
 Flow Rate :1.8ml/min  
 Column :SunFire C18, 4.6\*50mm,3.5um A-RP-392  
 Oven Temperature : 45C



Integration Results for DAD1 A, Sig=214,4 Ref=off

RetTim	Width	Area	Height	Area%	MS (+)
1.97	0.02	1833.58	1373.34	99.96	483
2.63	0.04	0.67	0.21	0.04	130

Integration Results for DAD1 B, Sig=254,4 Ref=off

RetTim	Width	Area	Height	Area%	MS (+)
1.32	0.01	0.17	0.18	0.01	130
1.35	0.01	0.11	0.13	0.01	130
1.61	0.04	0.92	0.32	0.05	130
1.78	0.08	0.62	0.14	0.03	130
1.85	0.06	0.71	0.21	0.04	130
1.97	0.02	1888.36	1417.63	99.87	483

Integration Results for ELS1 A, ELSD Signal

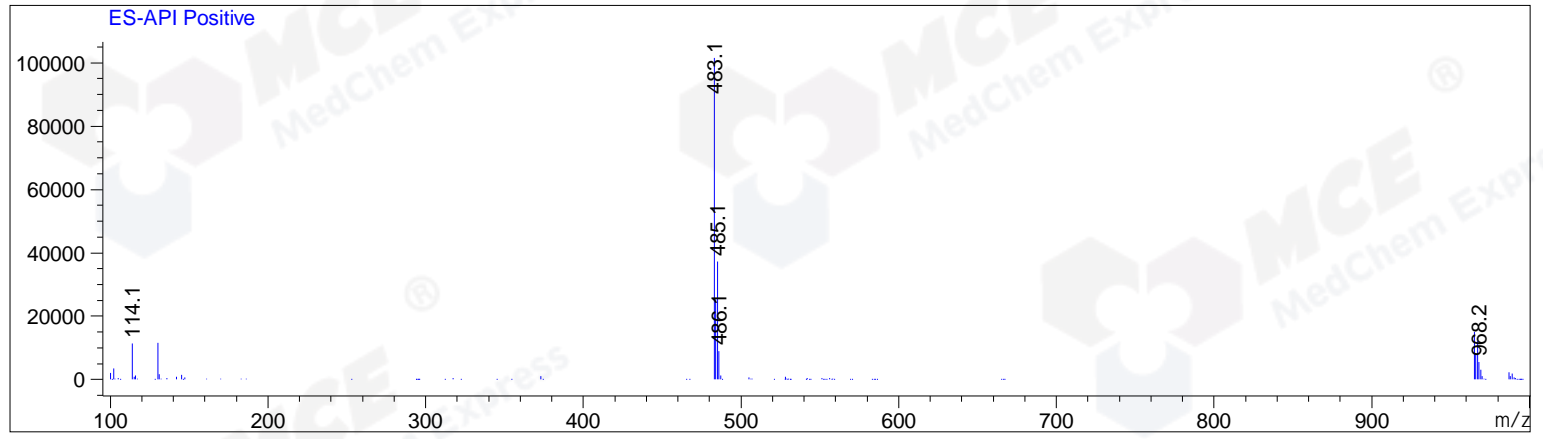
RetTim	Width	Area	Height	Area%	MS (+)
2.08	0.07	34.81	8.10	100.00	483

## Integration Results for MSD1 TIC, MS File

RetTim	Width	Area	Height	Area%	MS (+)
2.01	0.06	2615445.25	652703.69	100.00	483

Ret. Time: 2.01

<<<< POSITIVE SPECTRA >>>>



\*\*\* End of Report \*\*\*