

## YM022

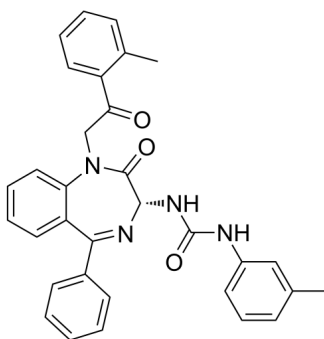
---

Cat. No.: HY-103355  
Batch No.: 229985  
CAS No.: 145084-28-2  
Molecular Formula: C<sub>32</sub>H<sub>28</sub>N<sub>4</sub>O<sub>3</sub>

### ANALYTICAL DATA

Theoretical: C(74.40%)、H(5.46%)、N(10.85%)  
Result: C(74.30%)、H(5.45%)、N(10.81%)

Chemical Structure:



**Caution: Product has not been fully validated for medical applications. For research use only.**

Tel: 609-228-6898

Fax: 609-228-5909

E-mail: [tech@MedChemExpress.com](mailto:tech@MedChemExpress.com)

Address: 1 Deer Park Dr, Suite Q, Monmouth Junction, NJ 08852, USA