

SAMPLE INFORMATION

CAS NO.: 897016-82-9

Sample information:

Vial: 1:F,3

Injection #: 1

Injection Volume: 0.30 ul

Run Time: 2.8 Minutes

Sample Set Name: 20221028

Acquired By: LY

Date Acquired: 10/28/2022 1:52:37 PM CST

Acq. Method Set: 1_POS_2MIN

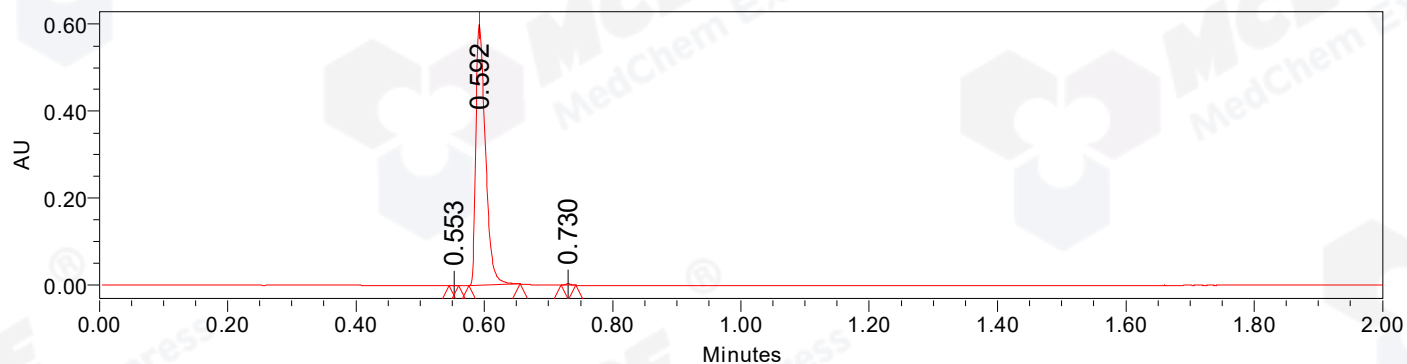
Date Processed: 10/31/2022 10:33:46 AM CST,

Processing Method: PDA_01, MS_scan

Channel Name: PDA Ch1 214nm@4.8nm, MS TIC,

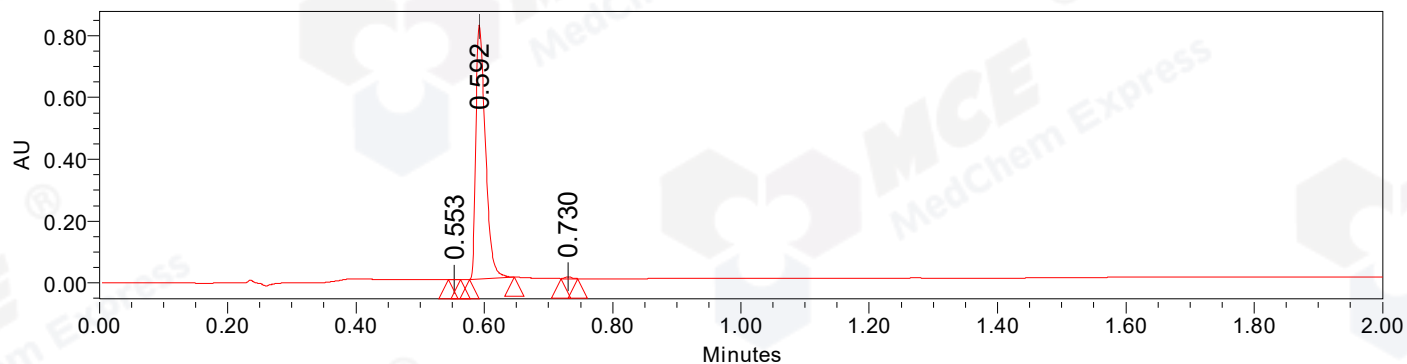
Column Name: A-RP-985

Auto-Scaled Chromatogram



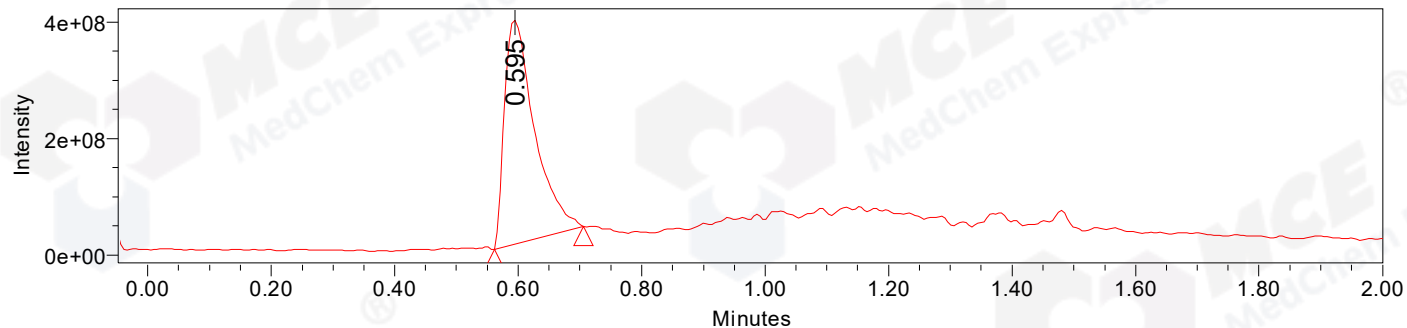
Processed Channel Descr. PDA Ch2 254nm@4.8nm

Auto-Scaled Chromatogram



Processed Channel Descr. PDA Ch1 214nm@4.8nm

Auto-Scaled Chromatogram



Processed Channel Descr. ACQ-SQD2 1: MS Scan MS TIC, Smoothed by 9 point Savitzky-Golay Filter., Time offset by -0.053 mins. (1: 150.00-1000.00 ES+, Centroid, CV=30)

Peak Results
Channel Name: PDA Ch2 254nm@4.8nm

	RT	Width (sec)	Area	Height	% Area	Base Peak (Combined) (m/z)	Channel Name
1	0.553	0.900	192	376	0.03	152.98	PDA Ch2 254nm@4.8nm
2	0.592	4.800	623533	599967	99.62	152.15	PDA Ch2 254nm@4.8nm
3	0.730	1.350	2186	3754	0.35	292.62	PDA Ch2 254nm@4.8nm

Peak Results
Channel Name: PDA Ch1 214nm@4.8nm

	RT	Width (sec)	Area	Height	% Area	Base Peak (Combined) (m/z)	Channel Name
1	0.553	1.150	247	426	0.03	152.95	PDA Ch1 214nm@4.8nm
2	0.592	4.200	853239	823292	99.56	152.14	PDA Ch1 214nm@4.8nm
3	0.730	1.550	3559	5857	0.42	151.95	PDA Ch1 214nm@4.8nm

Peak Results
Channel Name: MS TIC

	RT	Width (sec)	Area	Height	% Area	Base Peak (Combined) (m/z)	Channel Name
1	0.595	8.705	1304827444	384462628	100.00	216.74	MS TIC

Match Plot

