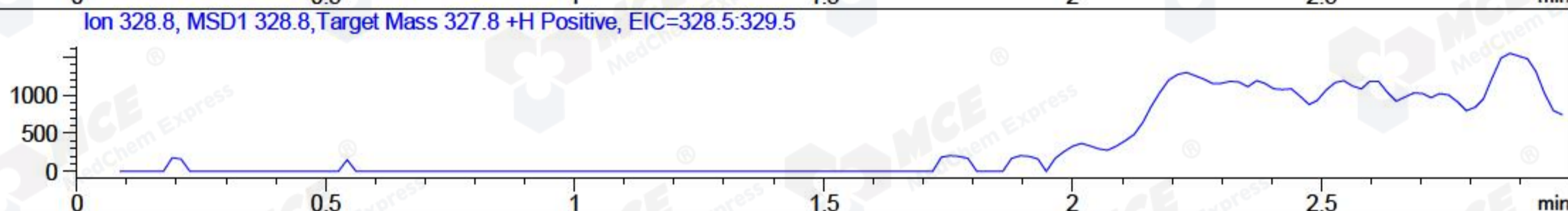
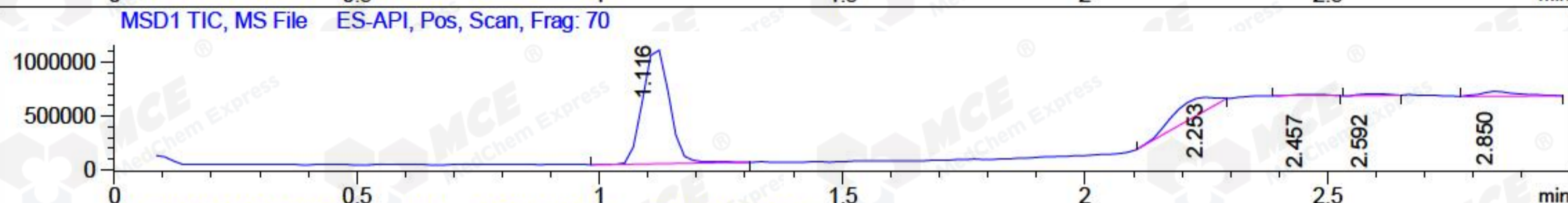
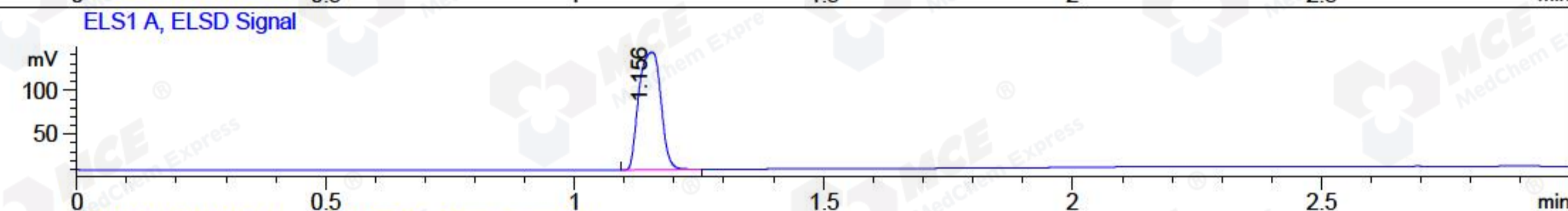
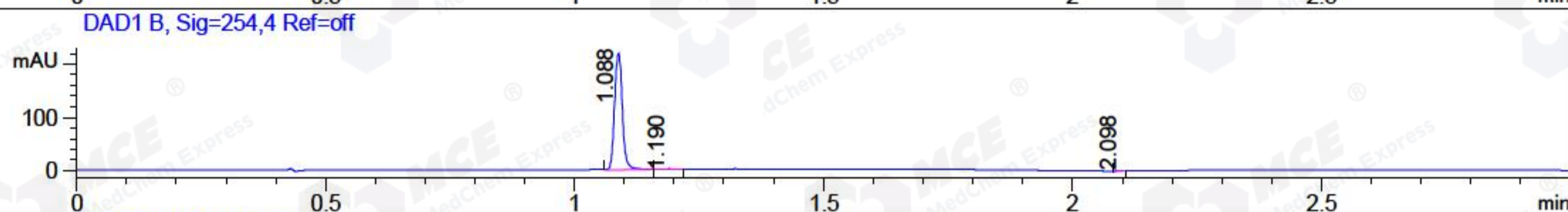
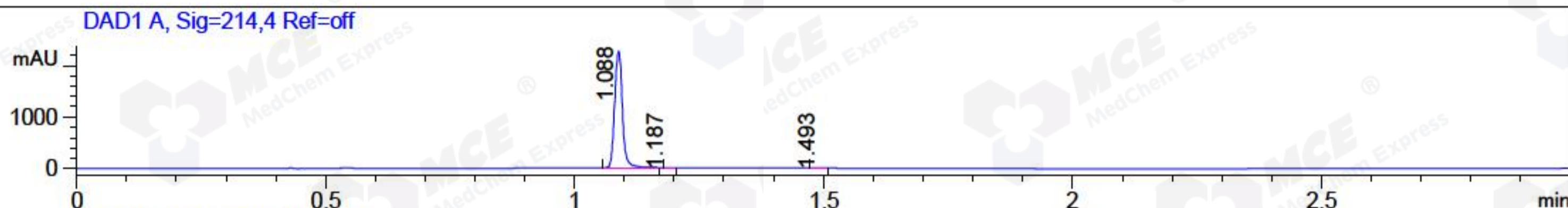


File ..\2018\20180225\20180225\CPK2018-223-15625.D Tgt Mass (CHM):  
 Injection Date : 25 Feb 18 6:33 pm +0800 Seq. Line : 63  
 Sample Name : CPK2018-223-15625 Location : P2-F-10  
 Acq. Operator : SYSTEM Inj : 1  
 Spec. Reported : MS Integration Inj Volume : 1 ul  
 Acq. Method : D:\LCMS03\Data\2018\20180225\20180225\1-POS-3MIN.M  
 Analysis Method : D:\LCMS03\Data\2018\20180225\20180225\1-POS-3MIN.M  
 Catalog No : HY-10341 Batch#15625  
 Method Info : Mobile Phase: A: water(0.01%TFA) B:ACN(0.01%TFA)  
 Gradient: 5% to 95%B within 1.3 min  
 Flow Rate : 1.8ml/min  
 Column :SunFire C18, 4.6\*50mm,3.5um A-RP-186  
 Oven Temperature : 45C



Integration Results for DAD1 A, Sig=214,4 Ref=off

RetTim	Width	Area	Height	Area%	MS (+)
1.09	0.02	2427.85	2265.03	99.91	292
1.19	0.01	0.63	0.71	0.03	292
1.49	0.02	1.47	1.34	0.06	102

Integration Results for DAD1 B, Sig=254,4 Ref=off

RetTim	Width	Area	Height	Area%	MS (+)
1.09	0.02	237.44	219.03	99.55	292
1.19	0.02	1.00	0.94	0.42	292
2.10	0.01	0.06	0.08	0.03	105

Integration Results for ELS1 A, ELSD Signal

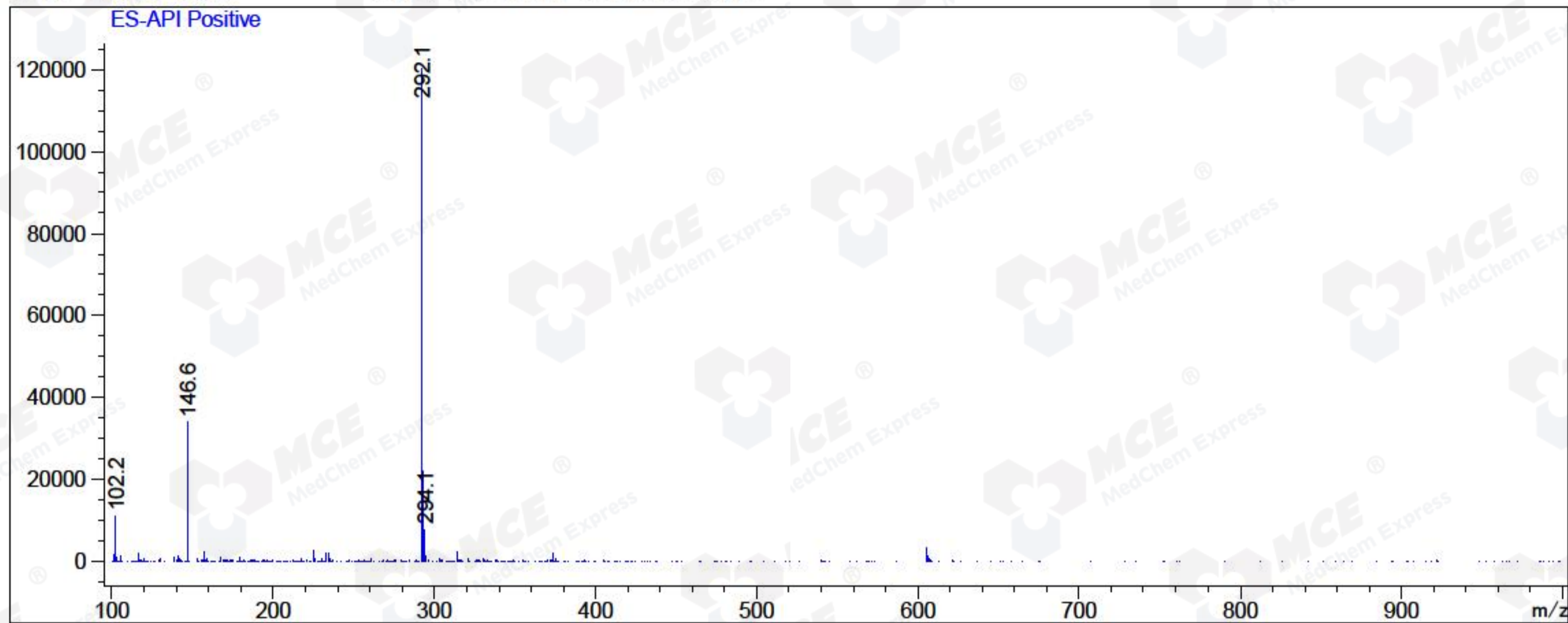
RetTim	Width	Area	Height	Area%	MS (+)
1.16	0.05	408.39	133.69	100.00	292

## Integration Results for MSD1 TIC, MS File

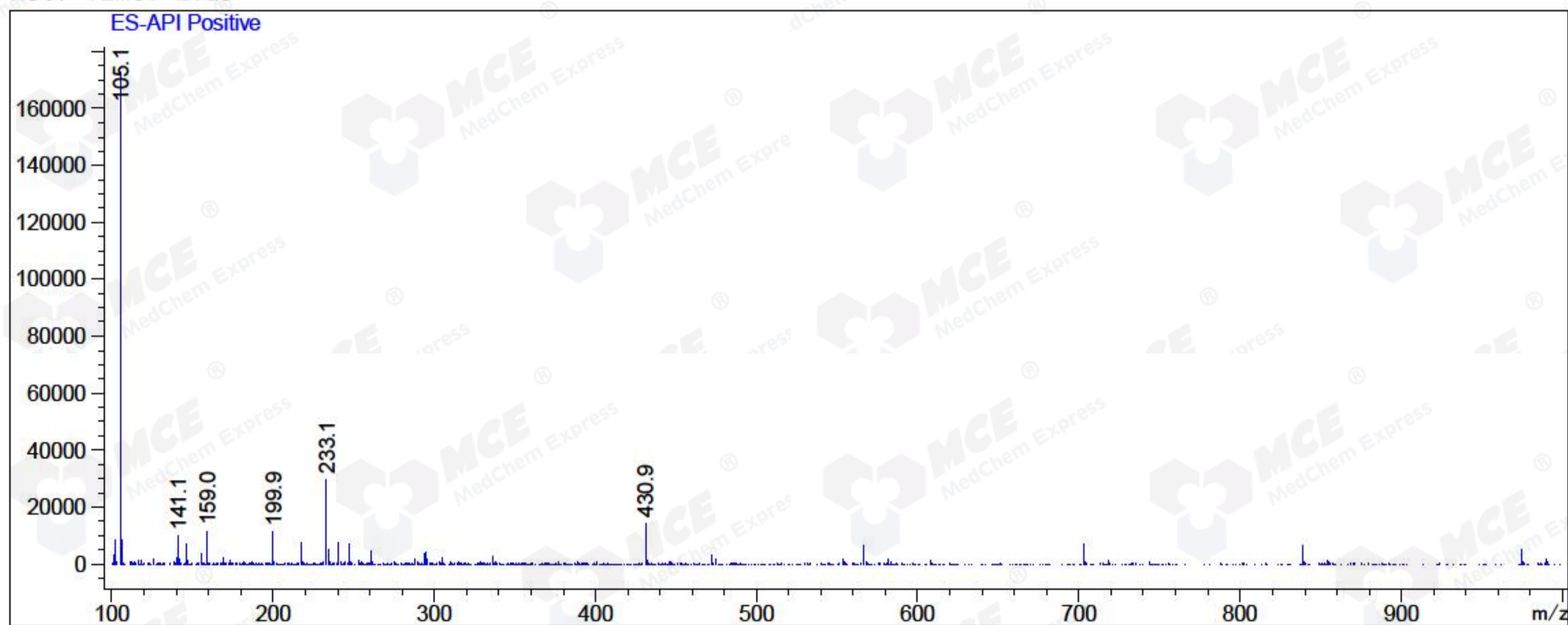
RetTim	Width	Area	Height	Area%	MS (+)
1.12	0.06	4090624.25	1086627.63	75.62	292
2.25	0.13	940539.06	111663.69	17.39	105
2.46	0.08	79021.98	15797.11	1.46	105
2.59	0.07	61844.17	15785.21	1.14	105
2.85	0.08	237704.23	44110.57	4.39	105

Ret. Time: 1.12

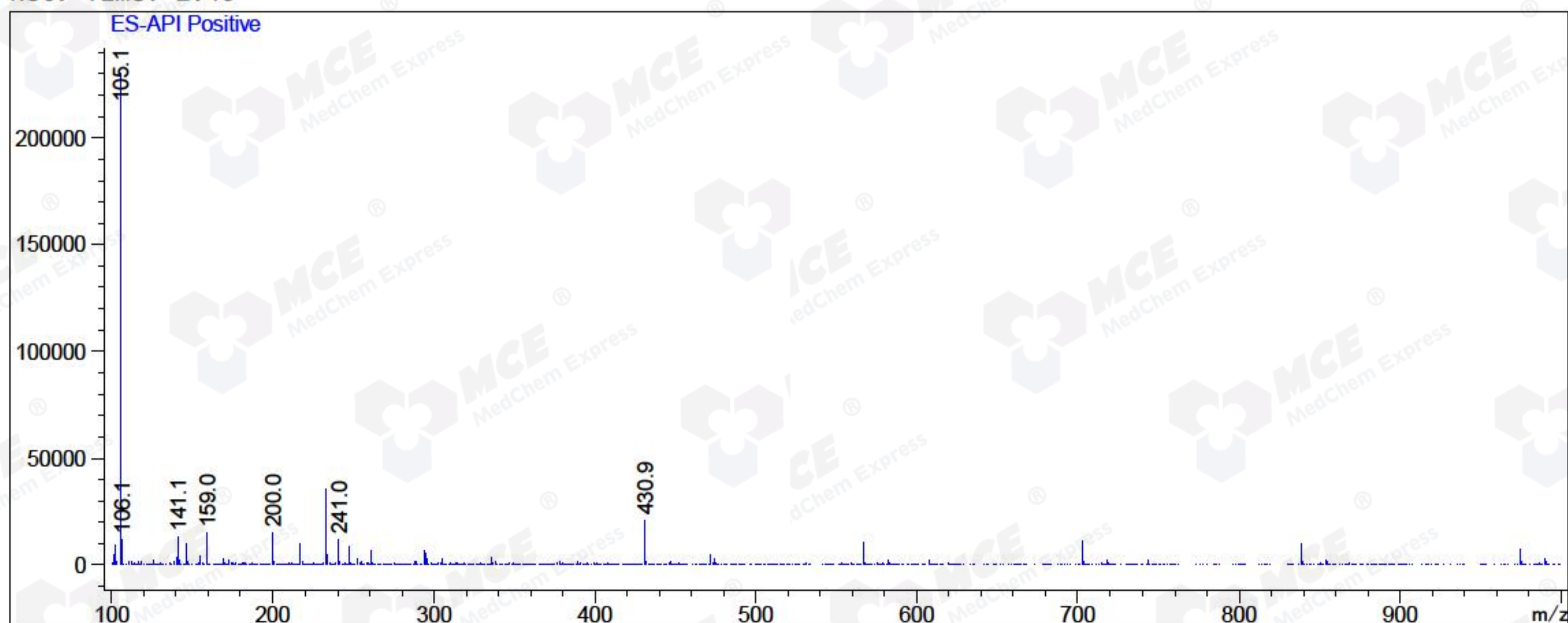
&lt;&lt;&lt;&lt; POSITIVE SPECTRA &gt;&gt;&gt;&gt;



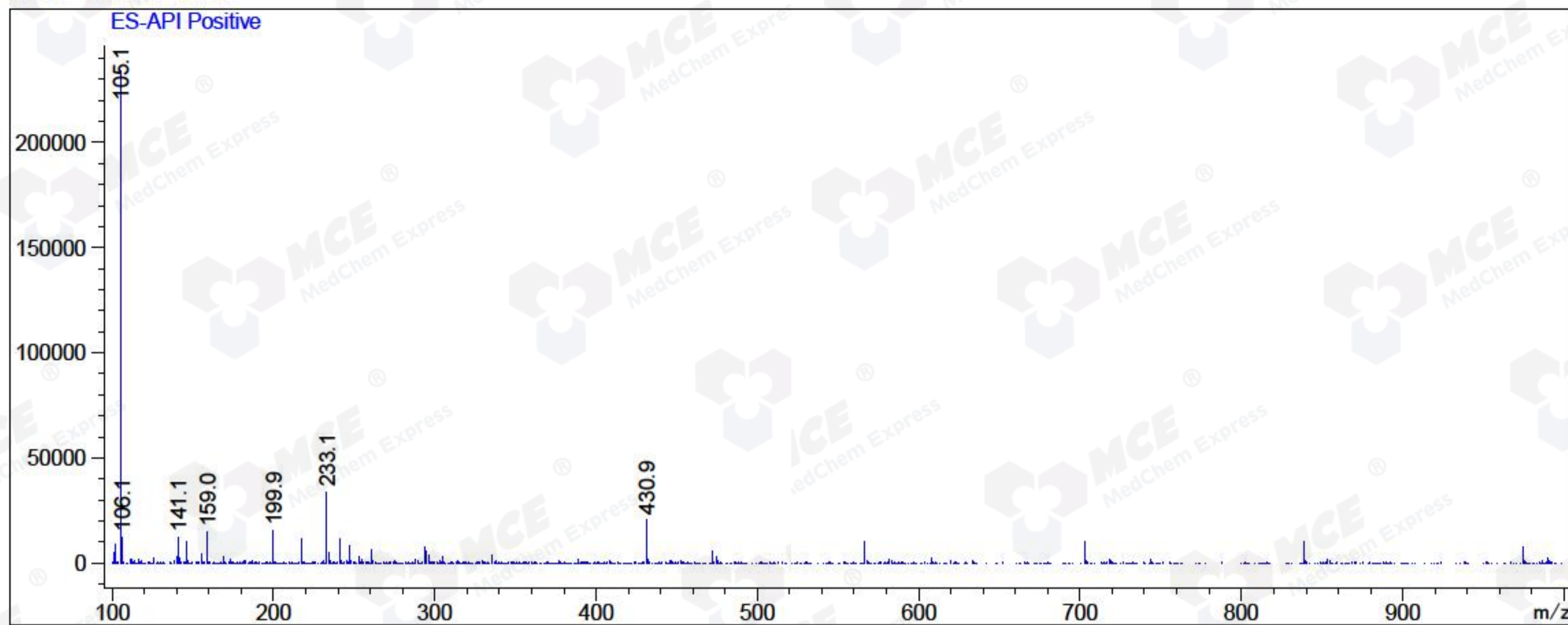
Ret. Time: 2.25



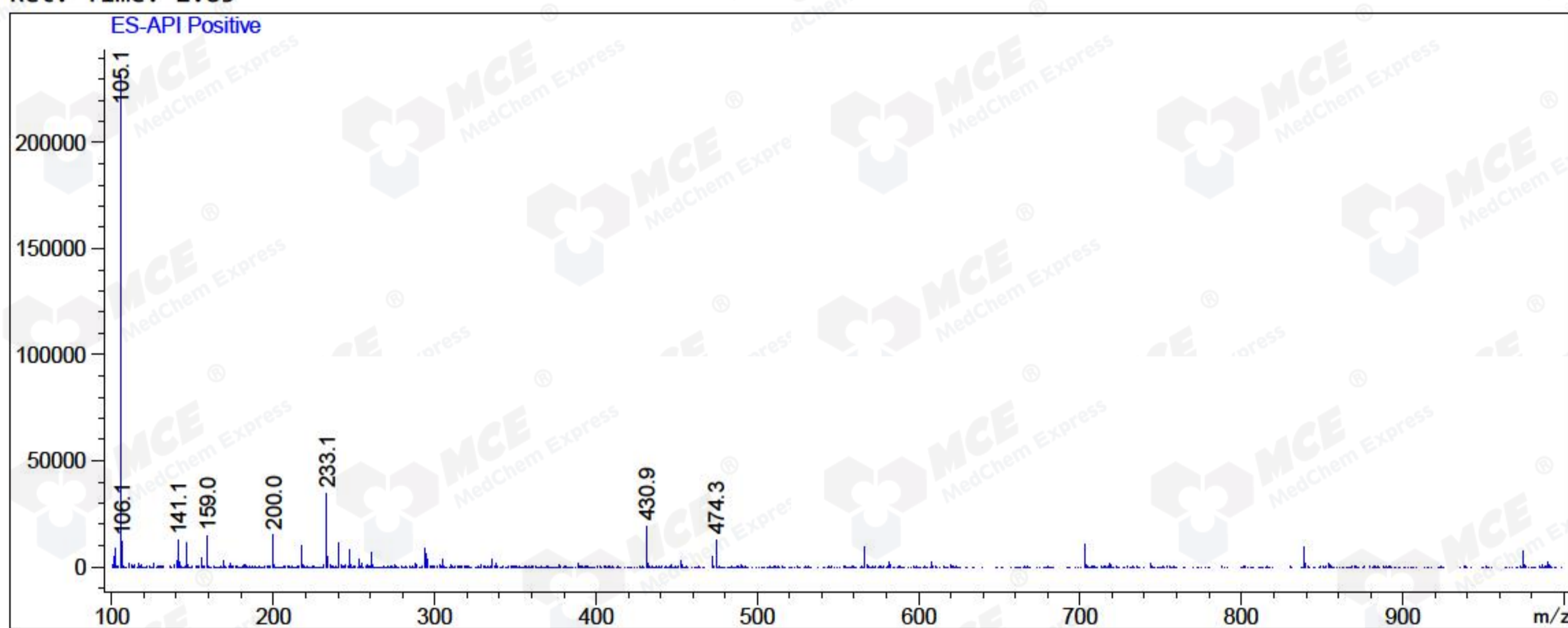
Ret. Time: 2.46



Ret. Time: 2.59



Ret. Time: 2.85



\*\*\* End of Report \*\*\*