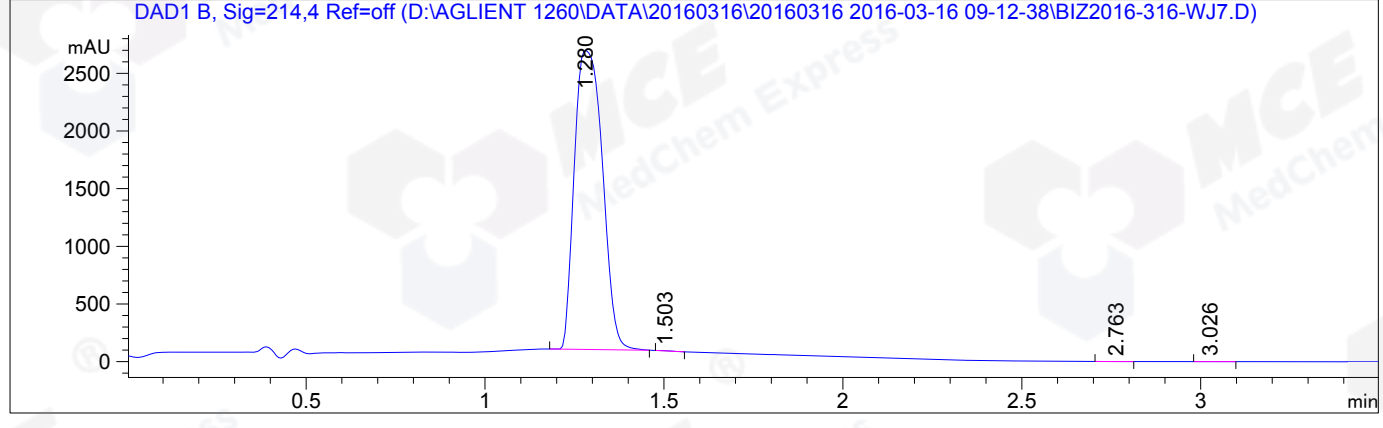


=====
Acq. Operator : Su Xiao Ying(LCMS-02) Seq. Line : 61
Acq. Instrument : HY-LCMS-02 Location : P2-F-01
Injection Date : 3/16/2016 2:32:46 PM Inj : 1
Inj Volume : 3.000 µl
Acq. Method : D:\AGLIENT 1260\DATA\20160316\20160316 2016-03-16 09-12-38\100-1000MS+3MIN-1.5_(0.02%FA).M
Last changed : 3/16/2016 9:12:38 AM by Su Xiao Ying(LCMS-02)
Analysis Method : D:\AGLIENT 1260\DATA\20160316\20160316 2016-03-16 09-12-38\100-1000MS+3MIN-1.5_(0.02%FA).M (Sequence Method)
Last changed : 3/16/2016 2:49:14 PM by Su Xiao Ying(LCMS-02)
(modified after loading)
Method Info : HY-365_5H01RS,M,A-RP-108, 210nm,23min
Catalog No : HY-10341 Batch#19812
A-RP-134

Additional Info : Peak(s) manually integrated



=====
Area Percent Report
=====

Sorted By : Signal
Multiplier : 1.0000
Dilution : 1.0000
Do not use Multiplier & Dilution Factor with ISTDs

Signal 1: DAD1 B, Sig=214,4 Ref=off

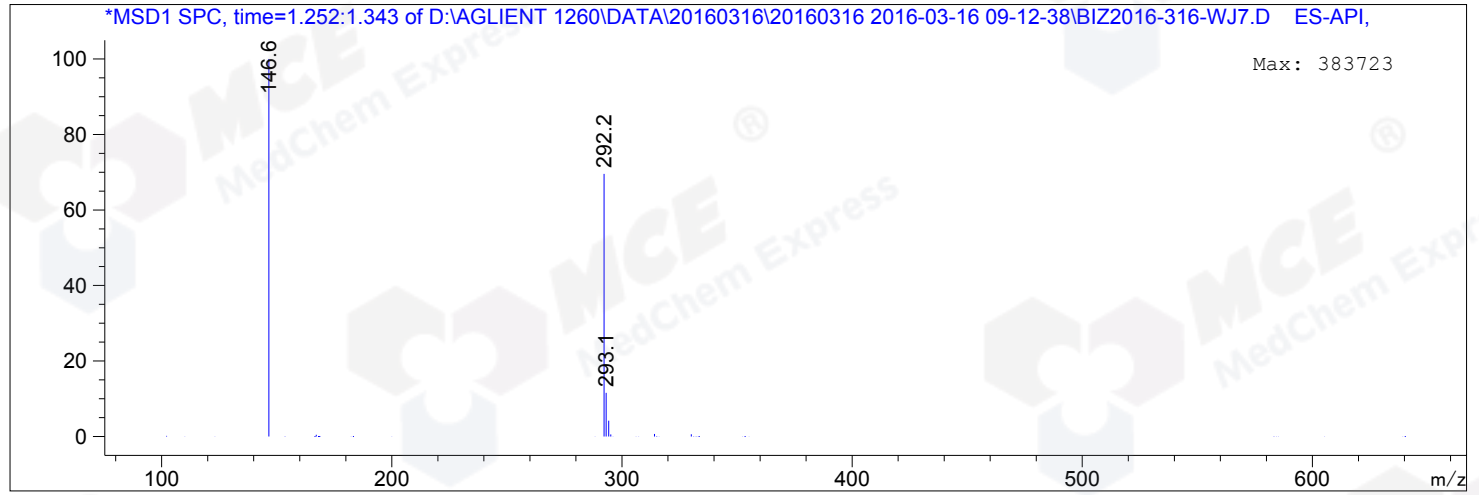
Peak #	RetTime [min]	Type	Width [min]	Area [mAU*s]	Height [mAU]	Area %
1	1.280	MM	0.0908	1.41182e4	2592.22729	99.9222
2	1.503	MM	0.0448	5.00763	1.86498	0.0354
3	2.763	MM	0.0436	2.28844	8.74427e-1	0.0162
4	3.026	MM	0.0467	3.70097	1.32141	0.0262

Totals : 1.41292e4 2596.28811

=====
*** End of Report ***
=====

MS Signal: MSD1 TIC, MS File, ES-API, Pos, Scan, Frag: 50
Spectra averaged over upper half of peaks.
Noise Cutoff: 1000 counts.
Reportable Ion Abundance: > 10%.

Retention Time (MS)	MS Area	Mol. Weight or Ion
1.290	6111638	293.10 I
		292.20 I
		146.60 I



*** End of Report ***