

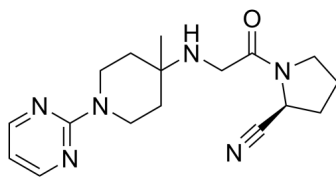
K579

Cat. No.: HY-103433
Batch No.: 392225
CAS No.: 440100-64-1
Molecular Formula: C₁₇H₂₄N₆O

ANALYTICAL DATA

Theoretical: C(62.17%), H(7.37%), N(25.59%)
Result: C(61.85%), H(7.46%), N(25.6%)

Chemical Structure:



Caution: Product has not been fully validated for medical applications. For research use only.

Tel: 609-228-6898

Fax: 609-228-5909

E-mail: tech@MedChemExpress.com

Address: 1 Deer Park Dr, Suite Q, Monmouth Junction, NJ 08852, USA