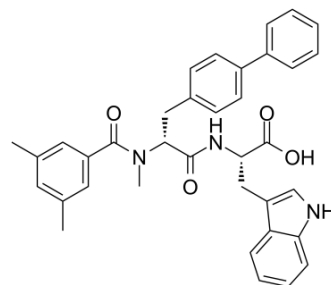


IRL 2500

| | |
|--------------------|--|
| Cat. No.: | HY-103460 |
| CAS No.: | 169545-27-1 |
| Molecular Formula: | C ₃₆ H ₃₅ N ₃ O ₄ |
| Molecular Weight: | 573.68 |
| Target: | Endothelin Receptor |
| Pathway: | GPCR/G Protein |
| Storage: | 4°C, sealed storage, away from moisture * In solvent : -80°C, 6 months; -20°C, 1 month (sealed storage, away from moisture) |



BIOLOGICAL ACTIVITY

| | | |
|-------------------------------------|---|--|
| Description | IRL 2500 is a potent Endothelin receptor antagonist. IRL 2500 shows IC ₅₀ values of 1.3 and 94 nM for ET _B and ET _A receptors, respectively. IRL 2500 inhibits ETB receptor-mediated blood pressure increase and renal vascular resistance in rats in vivo ^[1] . | |
| IC₅₀ & Target | ET _B 1.3 nM (IC ₅₀) | ET _A 94 nM (IC ₅₀) |
| In Vivo | <p>IRL 2500 (intravenous injection;10 mg/kg) inhibits the initial transient decrease in mean arterial pressure (MAP) induced by the ETB-selective agonist IRL 1620 in rats, IRL 2500 also attenuates the IRL 1620-mediated increase in renal vascular resistance (RVR) in the anesthetized rat^[1].</p> <p>IRL 2500 (intravenous injection;10 mg/kg) pre-treatment significantly reduces the initial vasodepressor response to endothelin-1 (ET-1) and IRL 1620, however, it is not alters the secondary and sustained pressor response to these agonists^[2].</p> <p>MCE has not independently confirmed the accuracy of these methods. They are for reference only.</p> | |

REFERENCES

- [1]. Balwierczak JL, et al. Characterization of a potent and selective endothelin-B receptor antagonist, IRL 2500. J Cardiovasc Pharmacol. 1995;26 Suppl 3:S393-6.
- [2]. Webb RL, et al. Effects of the ETB-selective antagonist IRL 2500 in conscious spontaneously hypertensive and Wistar-Kyoto rats. J Cardiovasc Pharmacol. 1995;26 Suppl 3:S389-92.

Caution: Product has not been fully validated for medical applications. For research use only.

Tel: 609-228-6898

Fax: 609-228-5909

E-mail: tech@MedChemExpress.com

Address: 1 Deer Park Dr, Suite Q, Monmouth Junction, NJ 08852, USA