

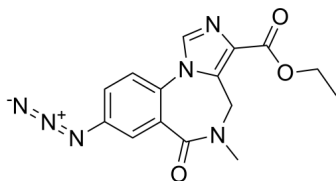
Ro15-4513

Cat. No.: HY-103476
Batch No.: 254664
CAS No.: 91917-65-6
Molecular Formula: C₁₅H₁₄N₆O₃

ANALYTICAL DATA

Theoretical: C(55.21%), H(4.32%), N(25.75%)
Result: C(55.36%), H(4.19%), N(25.42%)

Chemical Structure:



Caution: Product has not been fully validated for medical applications. For research use only.

Tel: 609-228-6898

Fax: 609-228-5909

E-mail: tech@MedChemExpress.com

Address: 1 Deer Park Dr, Suite Q, Monmouth Junction, NJ 08852, USA