

LY456236

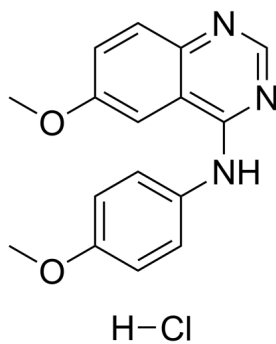
Cat. No.: HY-103566
Batch No.: 260447
CAS No.: 338736-46-2
Molecular Formula: C₁₆H₁₆ClN₃O₂

ANALYTICAL DATA

Theoretical: C(60.48%), H(5.07%), N(13.22%)

Result: C(60.11%), H(4.98%), N(13.06%)

Chemical Structure:



Caution: Product has not been fully validated for medical applications. For research use only.

Tel: 609-228-6898

Fax: 609-228-5909

E-mail: tech@MedChemExpress.com

Address: 1 Deer Park Dr, Suite Q, Monmouth Junction, NJ 08852, USA