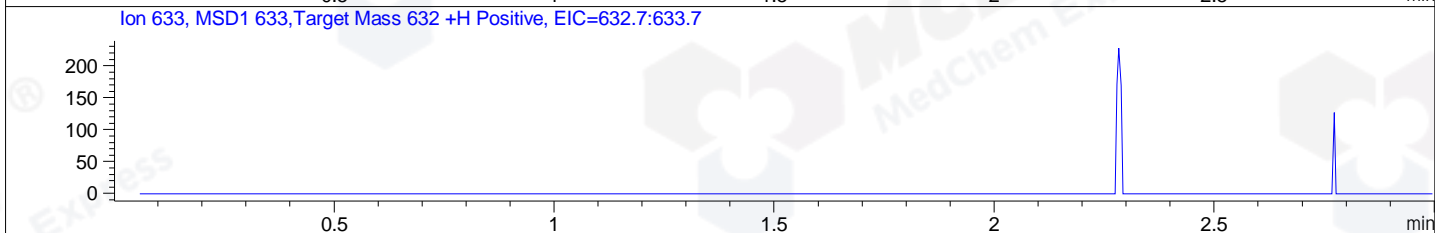
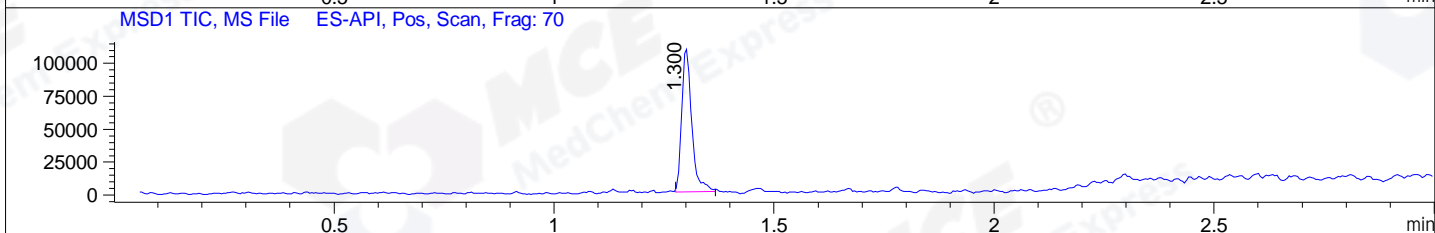
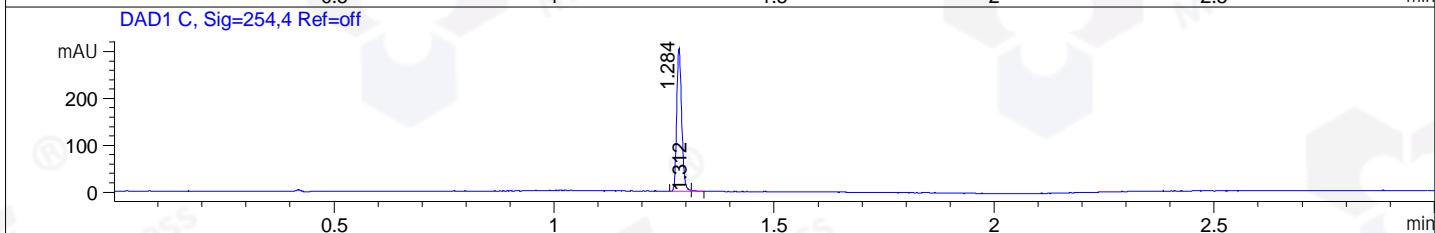
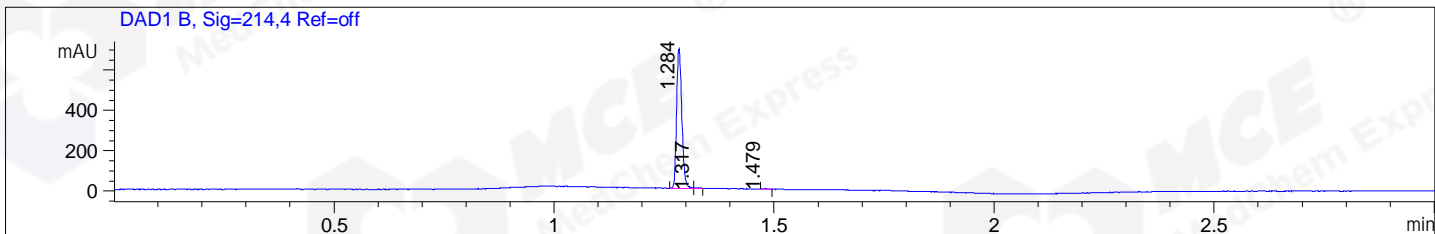


File ..DATA\2020\20200731\1059\BIZ2020-729-WLQ4-.D Tgt Mass (CHM):  
Injection Date : 31 Jul 20 2:15 pm +0800 Seq. Line : 39  
Sample Name : BIZ2020-729-WLQ4 Location : P1-A-01  
Acq. Operator : ZJ\_1432 Inj : 1  
Spec. Reported : MS Integration Inj Volume : 0.5 ul  
Acq. Method : D:\Chem32\1\data\2020\20200731\1059\1-POS-3MIN.M  
Analysis Method : D:\CHEM32\1\DATA\2020\20200731\1059\1-POS-3MIN.M  
Catalog No : HY-103714A  
Method Info : Mobile Phase: A: water(0.01%TFA) B:ACN(0.01%TFA)  
Gradient: 5% to 95%B within 1.3 min  
Flow Rate :1.8ml/min  
Column :SunFire C18, 4.6\*50mm,3.5um A-RP-314  
Oven Temperature : 45C



Integration Results for DAD1 B, Sig=214,4 Ref=off

RetTim	Width	Area	Height	Area%	MS (+)
1.28	0.01	568.00	693.62	99.26	281
1.32	0.01	2.03	2.79	0.35	281
1.48	0.01	2.20	2.64	0.38	ND

Integration Results for DAD1 C, Sig=254,4 Ref=off

RetTim	Width	Area	Height	Area%	MS (+)
1.28	0.01	238.29	305.39	99.31	281
1.31	0.01	1.66	2.32	0.69	281

Integration Results for MSD1 TIC, MS File

RetTim	Width	Area	Height	Area%	MS (+)
1.30	0.02	173361.42	109624.82	100.00	281

Ret. Time: 1.30

<<<< POSITIVE SPECTRA >>>>

ES-API Positive

