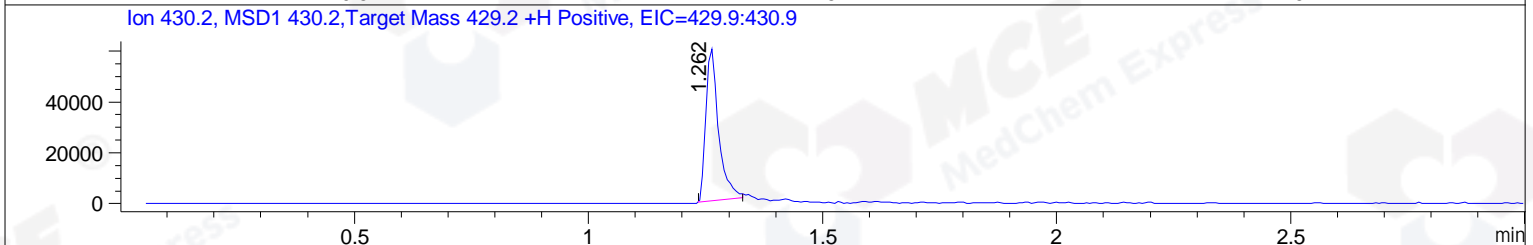
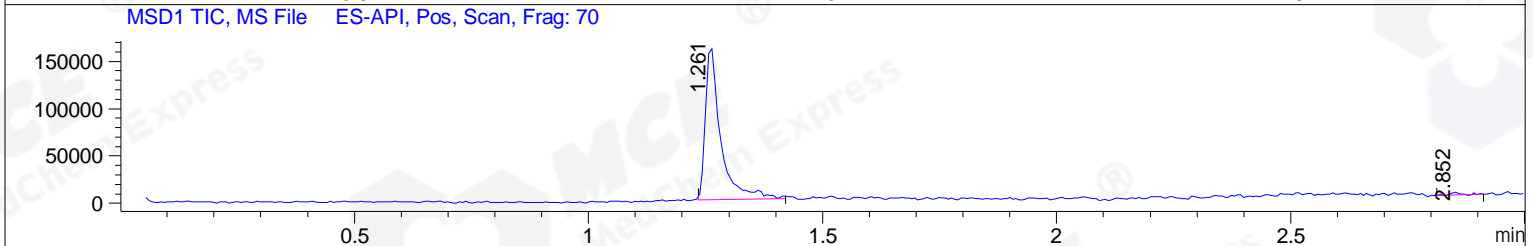
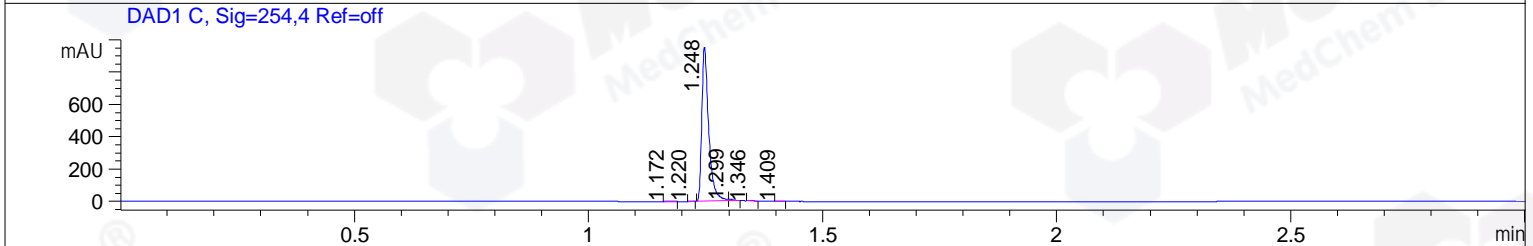
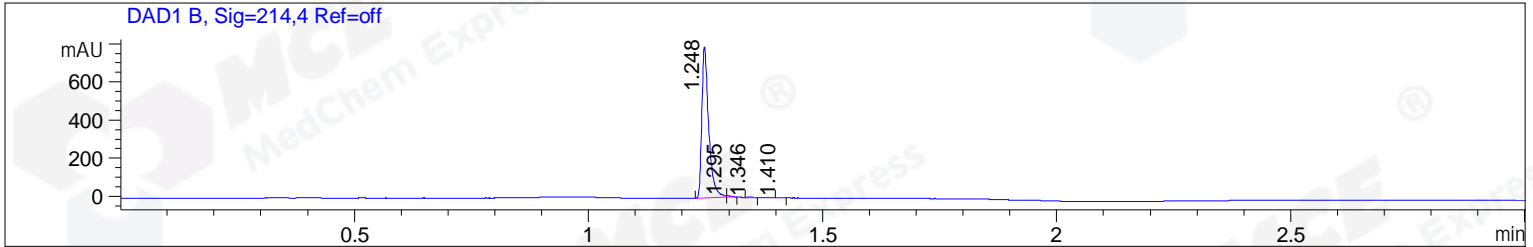


File ..\DATA\2019\20190430\564\BIZ2019-429-CXL2.D Tgt Mass (CHM):
 Injection Date : 30 Apr 19 10:49 am +0800 Seq. Line : 15
 Sample Name : BIZ2019-429-CXL2 Location : PI-D-04
 Acq. Operator : LQ_1052 Inj : 1
 Spec. Reported : MS Integration Inj Volume : 0.3 ul
 Acq. Method : D:\Chem32\1\data\2019\20190430\564\1-POS-3MIN-1.M
 Analysis Method : D:\CHEM32\1\DATA\2019\20190430\564\1-POS-3MIN-1.M
 Catalog No : HY-104008 Batch#408030
 Method Info : Mobile Phase: A: water(0.01%TFA) B:ACN(0.01%TFA)
 Gradient: 5% to 95%B within 1.3 min
 Flow Rate :1.8ml/min
 Column :SunFire C18, 4.6*50mm,3.5um A-RP-322
 Oven Temperature : 45



Integration Results for DAD1 B, Sig=214,4 Ref=off

RetTim	Width	Area	Height	Area%	MS (+)
1.25	0.02	807.44	793.90	98.96	430
1.29	0.01	5.71	7.35	0.70	430
1.35	0.01	1.76	2.13	0.22	430
1.41	0.01	1.02	1.25	0.13	430

Integration Results for DAD1 C, Sig=254,4 Ref=off

RetTim	Width	Area	Height	Area%	MS (+)
1.17	0.02	1.33	1.35	0.13	ND
1.22	0.01	0.28	0.38	0.03	ND
1.25	0.02	973.47	954.84	98.86	430
1.30	0.01	7.14	10.07	0.73	430
1.35	0.01	1.63	2.13	0.17	430
1.41	0.01	0.84	1.23	0.09	430

Integration Results for MSD1 TIC, MS File

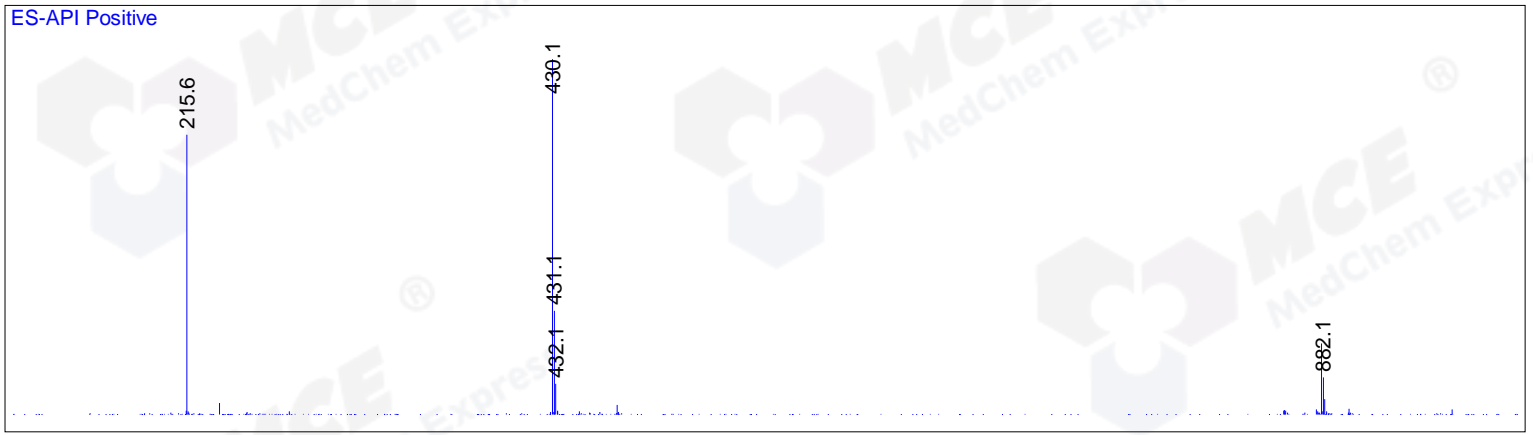
RetTim	Width	Area	Height	Area%	MS (+)
--------	-------	------	--------	-------	--------

1.26	0.03	368671.00	163036.09	98.83	430
2.85	0.03	4353.95	2695.71	1.17	253

Ret. Time: 1.26

<<<< POSITIVE SPECTRA >>>>

ES-API Positive



Ret. Time: 2.85

ES-API Positive

