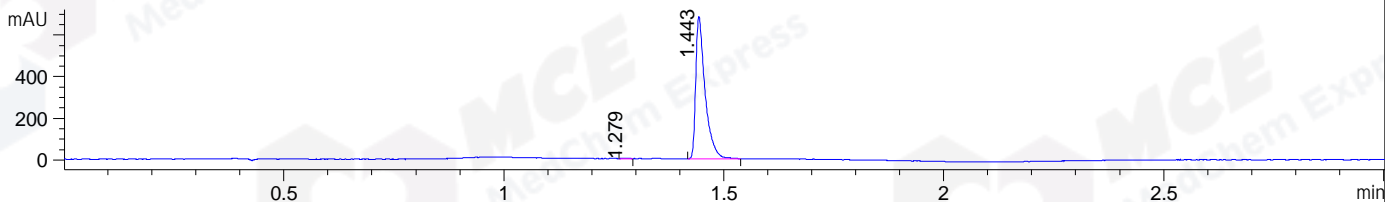
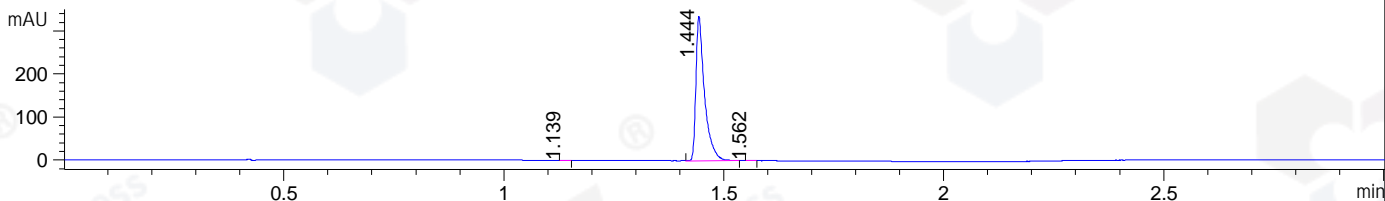


File ..DATA\2020\20200108\807 1\BIZ2020-107-CXL5.D Tgt Mass (CHM):
Injection Date : 8 Jan 20 2:11 pm +0800 Seq. Line : 34
Sample Name : BIZ2020-107-CXL5 Location : P1-B-05
Acq. Operator : ZJ_1432 Inj : 1
Spec. Reported : MS Integration Inj Volume : 1 ul
Acq. Method : D:\Chem32\1\data\2020\20200108\807 1\1-POS-3MIN.M
Analysis Method : D:\CHEM32\1\DATA\2020\20200108\807 1\1-POS-3MIN.M
Catalog No : HY-104040 Batch# 58813
Method Info : Mobile Phase: A: water(0.01%TFA) B:ACN(0.01%TFA)
Gradient: 5% to 95%B within 1.3 min
Flow Rate :1.8ml/min
Column :SunFire C18, 4.6*50mm,3.5um A-RP-433
Oven Temperature : 45

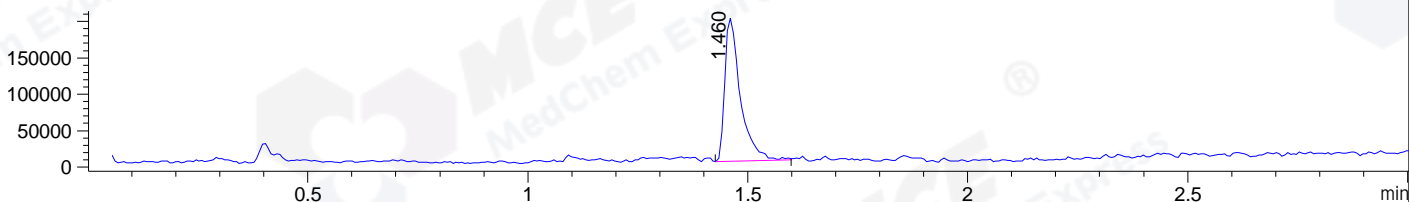
DAD1 B, Sig=214,4 Ref=off



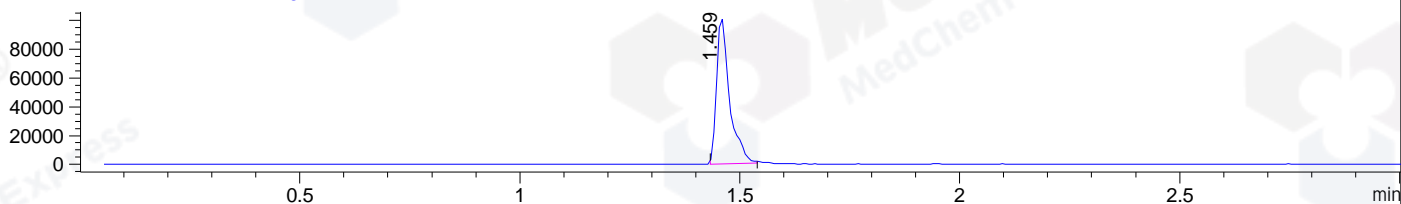
DAD1 C, Sig=254,4 Ref=off



MSD1 TIC, MS File ES-API, Pos, Scan, Frag: 70



Ion 362, MSD1 362, Target Mass 361 +H Positive, EIC=361.7:362.7



Integration Results for DAD1 B, Sig=214,4 Ref=off

RetTim	Width	Area	Height	Area%	MS (+)
1.28	0.02	1.27	1.38	0.13	ND
1.44	0.02	1009.58	683.16	99.87	362

Integration Results for DAD1 C, Sig=254,4 Ref=off

RetTim	Width	Area	Height	Area%	MS (+)
1.14	0.01	0.17	0.31	0.04	ND
1.44	0.02	458.51	336.36	99.90	362
1.56	0.01	0.27	0.39	0.06	362

Integration Results for MSD1 TIC, MS File

RetTim	Width	Area	Height	Area%	MS (+)
1.46	0.04	486675.84	196365.25	100.00	362

Ret. Time: 1.46

<<<< POSITIVE SPECTRA >>>>

ES-API Positive

