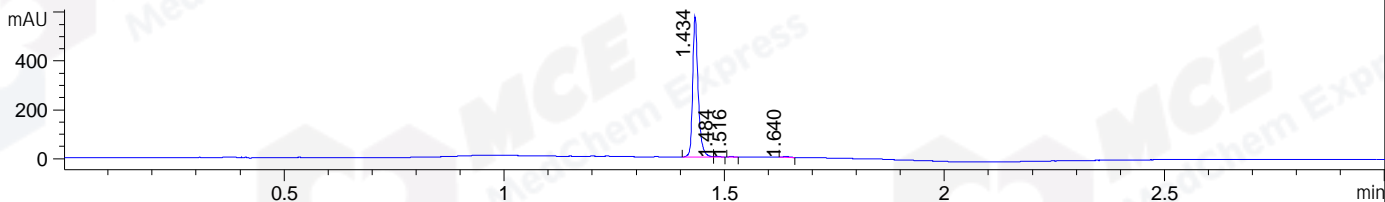
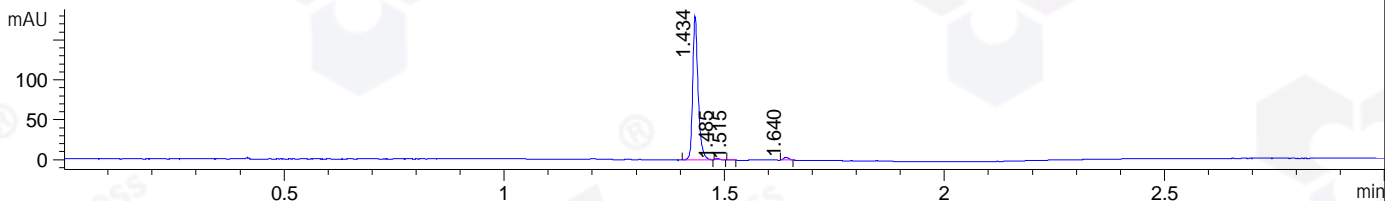


File ..DATA\2020\20200514\959\CPK2020-512-26164-.D Tgt Mass (CHM):  
 Injection Date : 14 May 20 2:34 pm +0800 Seq. Line : 64  
 Sample Name : CPK2020-512-26164 Location : P1-B-05  
 Acq. Operator : ZJ\_1432 Inj : 1  
 Spec. Reported : MS Integration Inj Volume : 0.3 ul  
 Acq. Method : D:\Chem32\1\data\2020\20200514\959\1-POS-3MIN.M  
 Analysis Method : D:\CHEM32\1\DATA\2020\20200514\959\1-POS-3MIN.M  
 Catalog No : HY-104047  
 Method Info : Mobile Phase: A: water(0.01%TFA) B:ACN(0.01%TFA)  
 Gradient: 5% to 95%B within 1.3 min  
 Flow Rate :1.8ml/min  
 Column :SunFire C18, 4.6\*50mm,3.5um A-RP-607  
 Oven Temperature : 45□

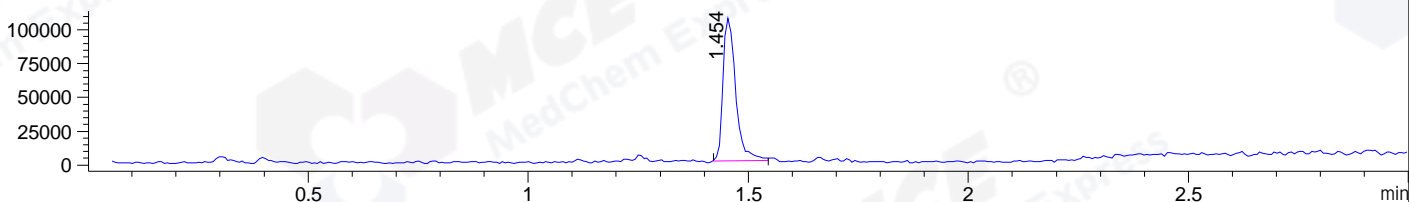
DAD1 B, Sig=214,4 Ref=off



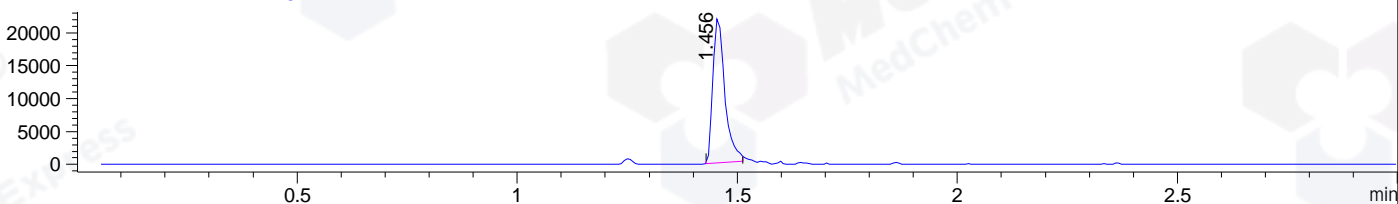
DAD1 C, Sig=254,4 Ref=off



MSD1 TIC, MS File ES-API, Pos, Scan, Frag: 70



Ion 485, MSD1 485, Target Mass 484 +H Positive, EIC=484.7:485.7



Integration Results for DAD1 B, Sig=214,4 Ref=off

RetTim	Width	Area	Height	Area%	MS (+)
1.43	0.01	496.27	575.34	98.60	243
1.48	0.01	2.02	2.39	0.40	485
1.52	0.01	1.11	1.42	0.22	ND
1.64	0.01	3.92	4.19	0.78	130

Integration Results for DAD1 C, Sig=254,4 Ref=off

RetTim	Width	Area	Height	Area%	MS (+)
1.43	0.01	153.85	180.17	98.04	243
1.48	0.01	0.79	1.32	0.50	485
1.52	0.01	0.25	0.48	0.16	ND
1.64	0.01	2.04	2.94	1.30	130

Integration Results for MSD1 TIC, MS File

RetTim	Width	Area	Height	Area%	MS (+)
1.45	0.03	210839.70	105573.05	100.00	243

Ret. Time: 1.45

<<<< POSITIVE SPECTRA >>>>

