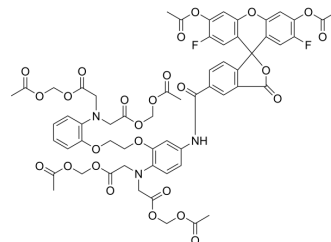


Oregon-BAPTA Green 1AM

Cat. No.:	HY-104058
CAS No.:	244167-57-5
Molecular Formula:	C ₅₉ H ₅₃ F ₂ N ₃ O ₂₆
Molecular Weight:	1258.05
Target:	Fluorescent Dye
Pathway:	Others
Storage:	Please store the product under the recommended conditions in the Certificate of Analysis.



BIOLOGICAL ACTIVITY

Description

Oregon-BAPTA Green 1AM (Oregon Green 488 BAPTA 1AM) is a fluorescent Ca²⁺ indicator that consists of a green fluorescent probe OG 488 and a cell-permeable Ca²⁺ chelator BAPTA AM.

Caution: Product has not been fully validated for medical applications. For research use only.

Tel: 609-228-6898

Fax: 609-228-5909

E-mail: tech@MedChemExpress.com

Address: 1 Deer Park Dr, Suite Q, Monmouth Junction, NJ 08852, USA