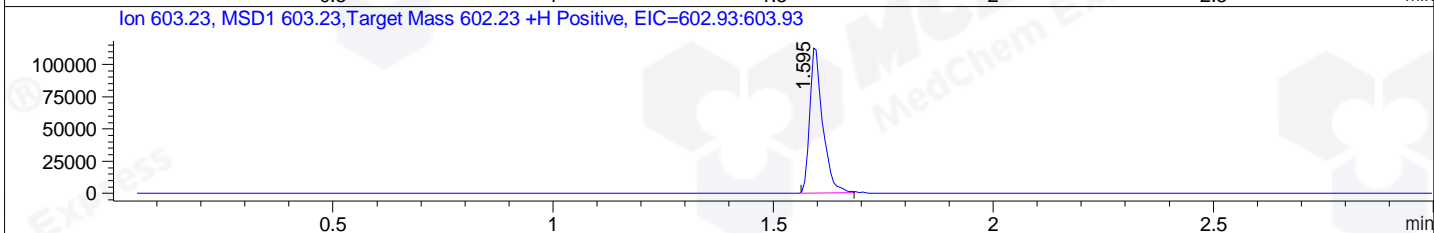
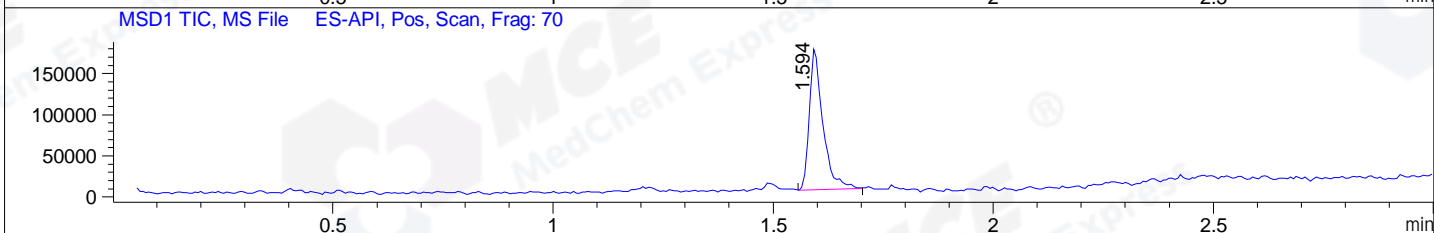
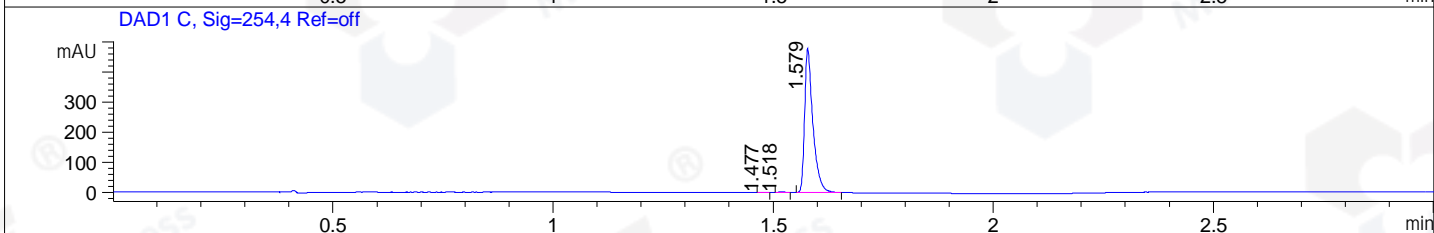
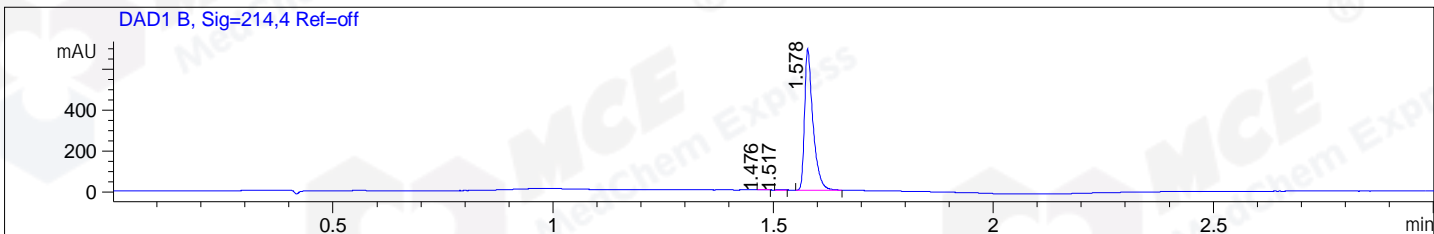


File ..\DATA\2019\20190925\720\BIZ2019-924-CXL1.D Tgt Mass (CHM):  
 Injection Date : 25 Sep 19 10:26 am +0800 Seq. Line : 24  
 Sample Name : BIZ2019-924-CXL1 Location : P1-A-01  
 Acq. Operator : bgd\_1571 Inj : 1  
 Spec. Reported : MS Integration Inj Volume : 1.6 ul  
 Acq. Method : D:\Chem32\1\data\2019\20190925\720\1-POS-3MIN.M  
 Analysis Method : D:\CHEM32\1\DATA\2019\20190925\720\1-POS-3MIN.M  
 Catalog No : HY-104077 Batch#46182  
 Method Info : Mobile Phase: A: water(0.01%TFA) B:ACN(0.01%TFA)  
 Gradient: 5% to 95%B within 1.3 min  
 Flow Rate :1.8ml/min  
 Column :SunFire C18, 4.6\*50mm,3.5um A-RP-433  
 Oven Temperature : 45



Integration Results for DAD1 B, Sig=214,4 Ref=off

RetTim	Width	Area	Height	Area%	MS (+)
1.48	0.02	1.15	1.28	0.13	658
1.52	0.01	1.19	1.38	0.13	658
1.58	0.02	914.10	693.06	99.74	603

Integration Results for DAD1 C, Sig=254,4 Ref=off

RetTim	Width	Area	Height	Area%	MS (+)
1.48	0.02	0.84	0.90	0.13	658
1.52	0.02	2.81	2.74	0.45	658
1.58	0.02	624.84	479.02	99.42	603

Integration Results for MSD1 TIC, MS File

RetTim	Width	Area	Height	Area%	MS (+)
1.59	0.03	370473.78	174477.02	100.00	603

Ret. Time: 1.59

<<<< POSITIVE SPECTRA >>>>

ES-API Positive

