

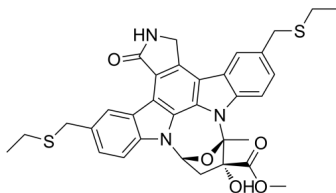
CEP-1347

Cat. No.: HY-10412
Batch No.: 316159
CAS No.: 156177-65-0
Molecular Formula: C₃₃H₃₃N₃O₅S₂

ANALYTICAL DATA

Theoretical: C(64.37%)、H(5.4%)、N(6.82%)
Result: C(64.1%)、H(5.33%)、N(6.95%)

Chemical Structure:



Caution: Product has not been fully validated for medical applications. For research use only.

Tel: 609-228-6898

Fax: 609-228-5909

E-mail: tech@MedChemExpress.com

Address: 1 Deer Park Dr, Suite Q, Monmouth Junction, NJ 08852, USA