

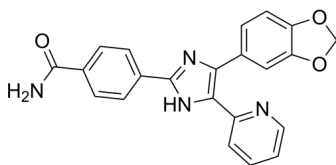
SB-431542

Cat. No.: HY-10431
Batch No.: 262852
CAS No.: 301836-41-9
Molecular Formula: C₂₂H₁₆N₄O₃

ANALYTICAL DATA

Theoretical: C(60.27%)、H(5.06%)、N(12.78%)
Result: C(60.23%)、H(4.755%)、N(12.58%)

Chemical Structure:



Caution: Product has not been fully validated for medical applications. For research use only.

Tel: 609-228-6898

Fax: 609-228-5909

E-mail: tech@MedChemExpress.com

Address: 1 Deer Park Dr, Suite Q, Monmouth Junction, NJ 08852, USA