

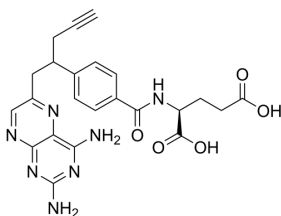
Pralatrexate

Cat. No.: HY-10446
CAS No.: 146464-95-1
Batch No.: 09586
Chemical Name: L-Glutamic acid, N-[4-[1-[(2,4-diamino-6-pteridinyl)methyl]-3-butyn-1-yl]benzoyl]-

PHYSICAL AND CHEMICAL PROPERTIES

Molecular Formula: C₂₃H₂₃N₇O₅
Molecular Weight: 477.47
Storage: Powder -20°C 3 years
4°C 2 years
In solvent -80°C 2 years
-20°C 1 year

Chemical Structure:



ANALYTICAL DATA

Appearance: Light yellow to yellow (Solid)
LCMS: Consistent with structure
Purity (LCMS): 99.23%
Conclusion: The product has been tested and complies with the given specifications.

Caution: Product has not been fully validated for medical applications. For research use only.

Tel: 609-228-6898

Fax: 609-228-5909

E-mail: tech@MedChemExpress.com

Address: 1 Deer Park Dr, Suite Q, Monmouth Junction, NJ 08852, USA