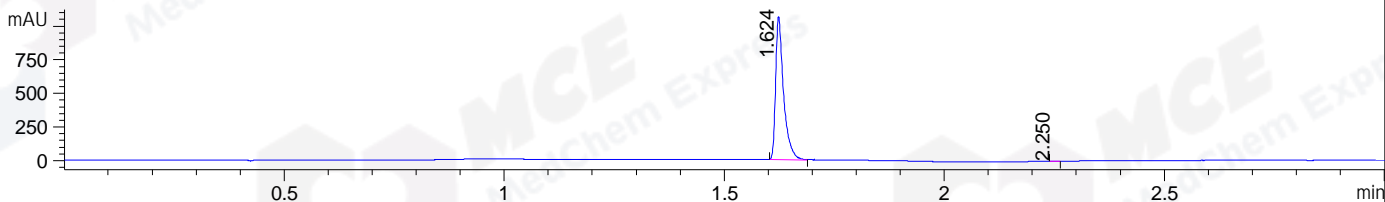
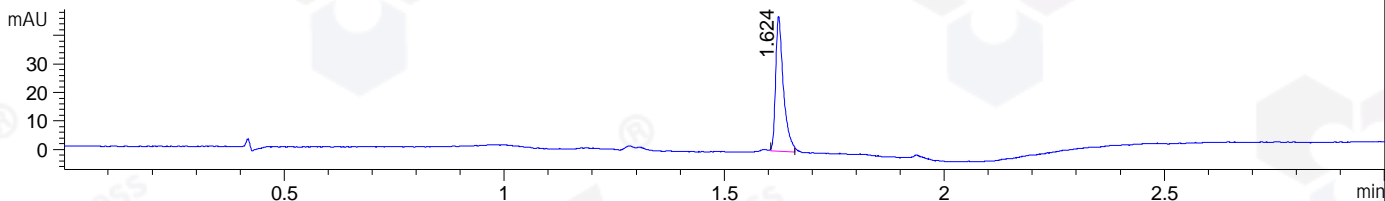


File ..1\DATA\2019\20190909\722\BIZ2019-906-WSD7.D Tgt Mass (CHM):  
Injection Date : 9 Sep 19 1:50 pm +0800 Seq. Line : 26  
Sample Name : BIZ2019-906-WSD7 Location : P2-C-03  
Acq. Operator : LQ\_1052 Inj : 1  
Spec. Reported : MS Integration Inj Volume : 1 ul  
Acq. Method : D:\Chem32\1\data\2019\20190909\722\1-POS-3MIN.M  
Analysis Method : D:\CHEM32\1\DATA\2019\20190909\722\1-POS-3MIN.M  
Catalog No : HY-10450 Batch# 45242 A-RP-322  
Method Info : Mobile Phase: A: water(0.01%TFA) B:ACN(0.01%TFA)  
Gradient: 5% to 95%B within 1.3 min  
Flow Rate :1.8ml/min  
Column :SunFire C18, 4.6\*50mm,3.5um A-RP-433  
Oven Temperature : 45

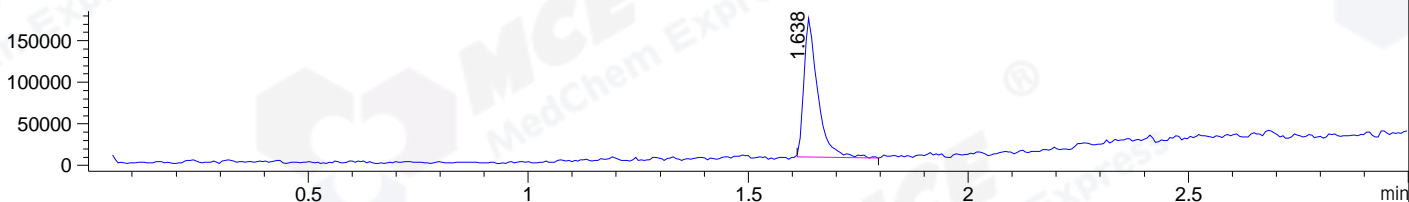
DAD1 B, Sig=214,4 Ref=off



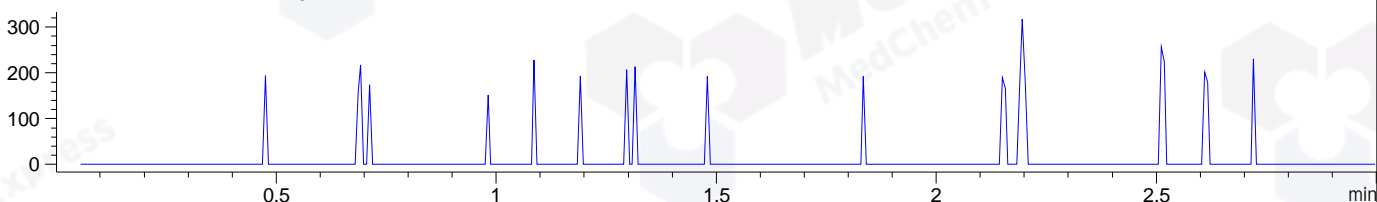
DAD1 C, Sig=254,4 Ref=off



MSD1 TIC, MS File ES-API, Pos, Scan, Frag: 70



Ion 409.1, MSD1 409.1, Target Mass 408.1 +H Positive, EIC=408.8:409.8



## Integration Results for DAD1 B, Sig=214,4 Ref=off

RetTim	Width	Area	Height	Area%	MS (+)
1.62	0.02	1335.95	1064.84	99.96	431
2.25	0.01	0.52	0.84	0.04	141

## Integration Results for DAD1 C, Sig=254,4 Ref=off

RetTim	Width	Area	Height	Area%	MS (+)
1.62	0.02	58.33	47.37	100.00	431

## Integration Results for MSD1 TIC, MS File

RetTim	Width	Area	Height	Area%	MS (+)
1.64	0.03	371491.31	167262.38	100.00	431

Ret. Time: 1.64

<<<< POSITIVE SPECTRA >>>>

ES-API Positive

