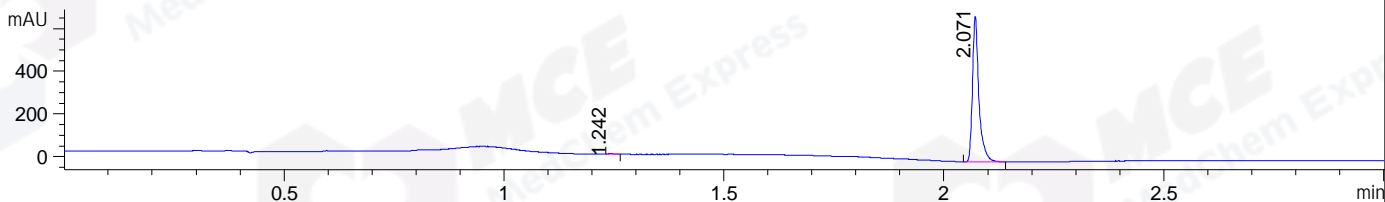
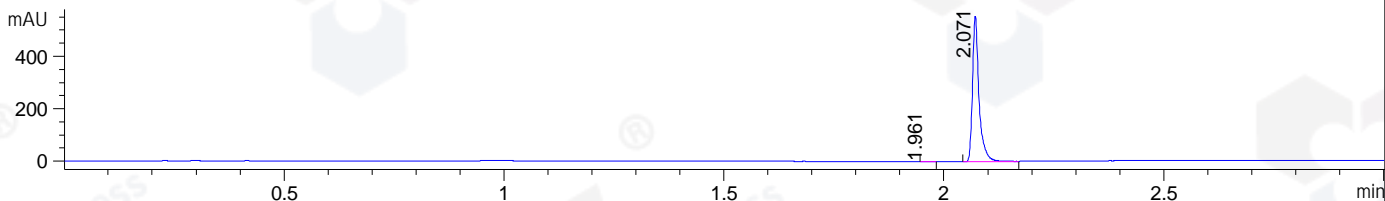


File ..DATA\2020\20200604\985\CPK2020-603-07641-.D Tgt Mass (CHM):  
 Injection Date : 4 Jun 20 6:21 pm +0800 Seq. Line : 110  
 Sample Name : CPK2020-603-07641 Location : P1-B-09  
 Acq. Operator : ZJ\_1432 Inj : 1  
 Spec. Reported : MS Integration Inj Volume : 0.5 ul  
 Acq. Method : D:\Chem32\1\data\2020\20200604\985\1-POS-3MIN.M  
 Analysis Method : D:\CHEM32\1\DATA\2020\20200604\985\1-POS-3MIN.M  
 Catalog No : HY-10456  
 Method Info : Mobile Phase: A: water(0.01%TFA) B:ACN(0.01%TFA)  
 Gradient: 5% to 95%B within 1.3 min  
 Flow Rate :1.8ml/min  
 Column :SunFire C18, 4.6\*50mm,3.5um A-RP-607  
 Oven Temperature : 45

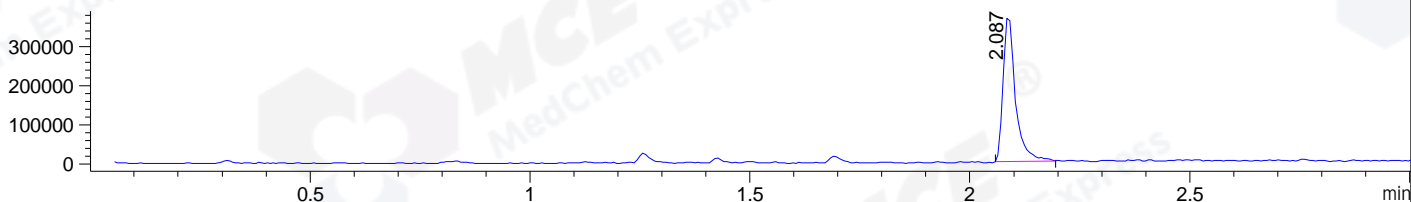
DAD1 B, Sig=214,4 Ref=off



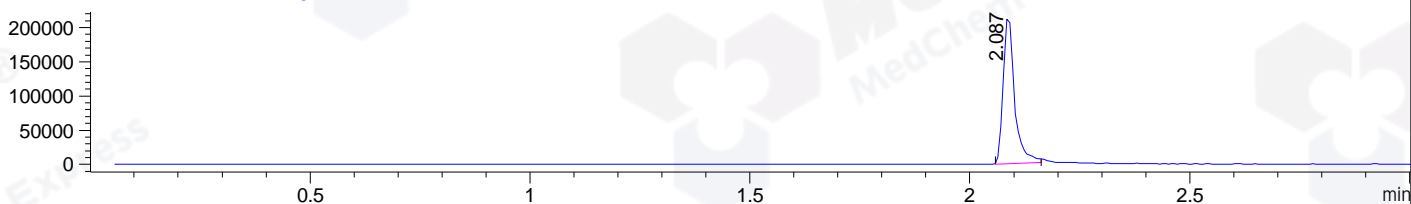
DAD1 C, Sig=254,4 Ref=off



MSD1 TIC, MS File ES-API, Pos, Scan, Frag: 70



Ion 400, MSD1 400, Target Mass 399 +H Positive, EIC=399.7:400.7



## Integration Results for DAD1 B, Sig=214,4 Ref=off

RetTim	Width	Area	Height	Area%	MS (+)
1.24	0.02	2.82	3.11	0.40	340
2.07	0.02	697.40	682.07	99.60	400

## Integration Results for DAD1 C, Sig=254,4 Ref=off

RetTim	Width	Area	Height	Area%	MS (+)
1.96	0.02	0.64	0.66	0.11	ND
2.07	0.02	576.93	556.23	99.89	400

## Integration Results for MSD1 TIC, MS File

RetTim	Width	Area	Height	Area%	MS (+)
2.09	0.03	716793.50	379412.78	100.00	400

Ret. Time: 2.09

<<<< POSITIVE SPECTRA >>>>

ES-API Positive

