

File ..DATA\2019\20190906\715\CPK2019-905-13762-.D Tgt Mass (CHM):

Injection Date : 6 Sep 19 2:26 pm +0800 Seq. Line : 67

Sample Name : CPK2019-905-13762 Location : P1-C-01

Acq. Operator : bgd_1571 Inj : 1

Spec. Reported : MS Integration Inj Volume : 2.5 ul

Acq. Method : D:\Chem32\1\data\2019\20190906\715\1-POS-3MIN.M

Analysis Method : D:\CHEM32\1\DATA\2019\20190906\715\1-POS-3MIN.M

Catalog No : HY-10461 Batch#13762

Method Info : Mobile Phase: A: water(0.01%TFA) B:ACN(0.01%TFA)

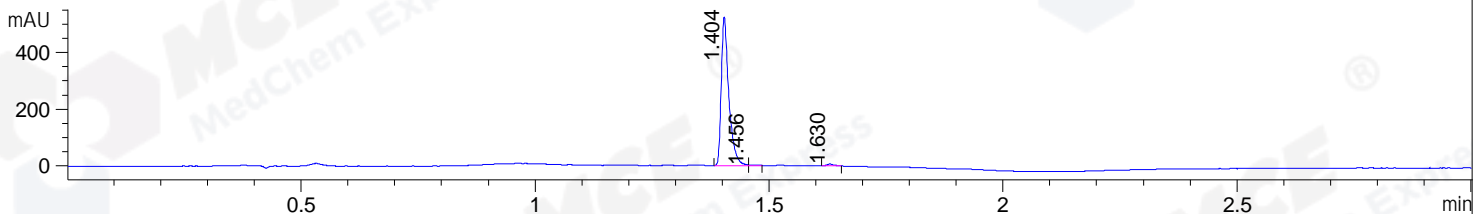
Gradient: 5% to 95%B within 1.3 min

Flow Rate :1.8ml/min

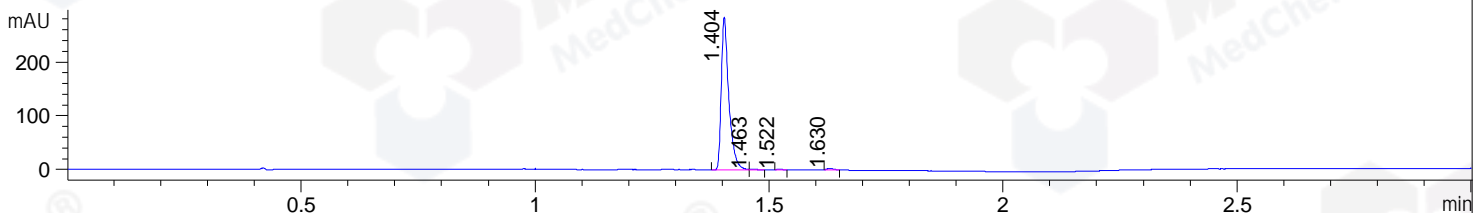
Column :SunFire C18, 4.6*50mm,3.5um A-RP-433

Oven Temperature : 45

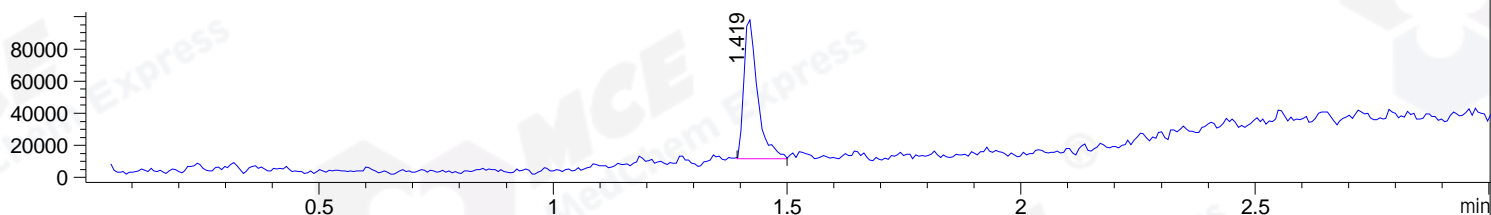
DAD1 B, Sig=214,4 Ref=off



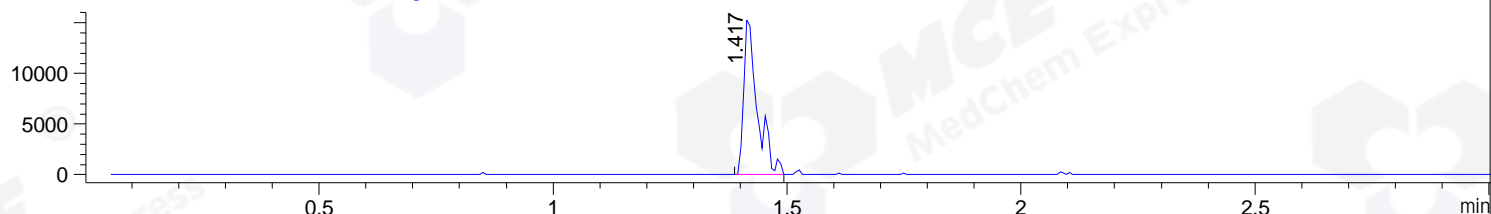
DAD1 C, Sig=254,4 Ref=off



MSD1 TIC, MS File ES-API, Pos, Scan, Frag: 70



Ion 492.4956, MSD1 492.4956, Target Mass 491.4956 +H Positive, EIC=492.20:493.20



Integration Results for DAD1 B, Sig=214,4 Ref=off

RetTim	Width	Area	Height	Area%	MS (+)
1.40	0.02	587.03	523.91	98.53	492
1.46	0.02	2.55	2.47	0.43	514
1.63	0.02	6.20	6.34	1.04	ND

Integration Results for DAD1 C, Sig=254,4 Ref=off

RetTim	Width	Area	Height	Area%	MS (+)
1.40	0.02	317.27	284.24	98.56	492
1.46	0.01	1.28	1.48	0.40	514
1.52	0.01	0.85	1.16	0.26	141
1.63	0.02	2.51	2.78	0.78	141

Integration Results for MSD1 TIC, MS File

RetTim	Width	Area	Height	Area%	MS (+)
1.42	0.03	178240.70	87717.88	100.00	492

Ret. Time: 1.42

<<<< POSITIVE SPECTRA >>>>

ES-API Positive

