

File ..DATA\2019\20191016\733\CPK2019-014-13884-.D Tgt Mass (CHM):

Injection Date : 16 Oct 19 3:37 pm +0800 Seq. Line : 86

Sample Name : CPK2019-014-13884 Location : P1-F-03

Acq. Operator : ZJ_1432 Inj : 1

Spec. Reported : MS Integration Inj Volume : 0.5 ul

Acq. Method : D:\Chem32\1\data\2019\20191016\733\1-POS-3MIN.M

Analysis Method : D:\CHEM32\1\DATA\2019\20191016\733\1-POS-3MIN.M

Catalog No : HY-10466 Batch#13884

Method Info : Mobile Phase: A: water(0.01%TFA) B:ACN(0.01%TFA)

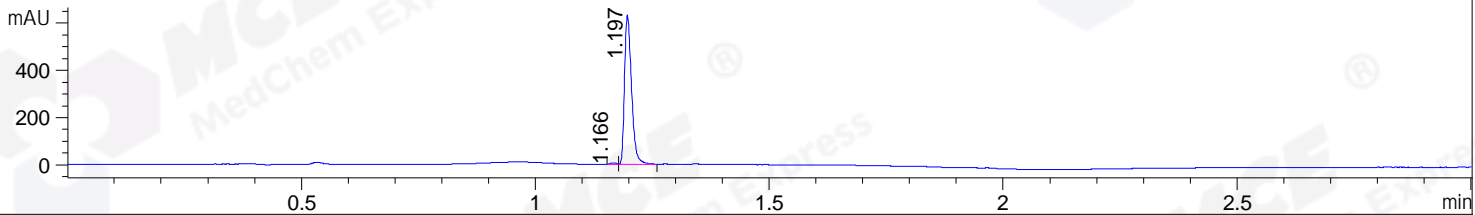
Gradient: 5% to 95%B within 1.3 min

Flow Rate :1.8ml/min

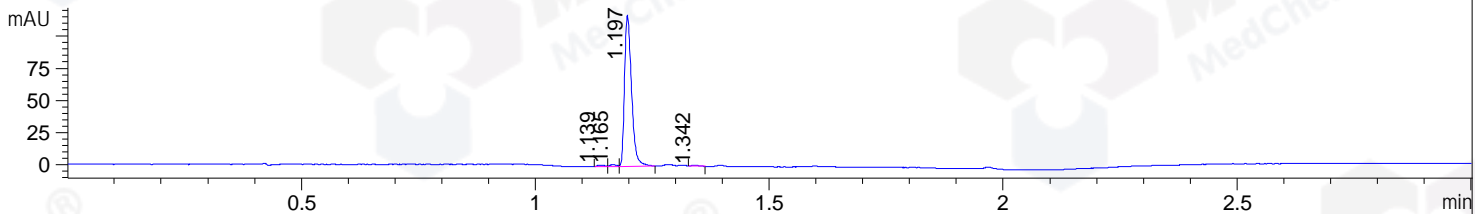
Column :SunFire C18, 4.6*50mm,3.5um A-RP-433

Oven Temperature : 45

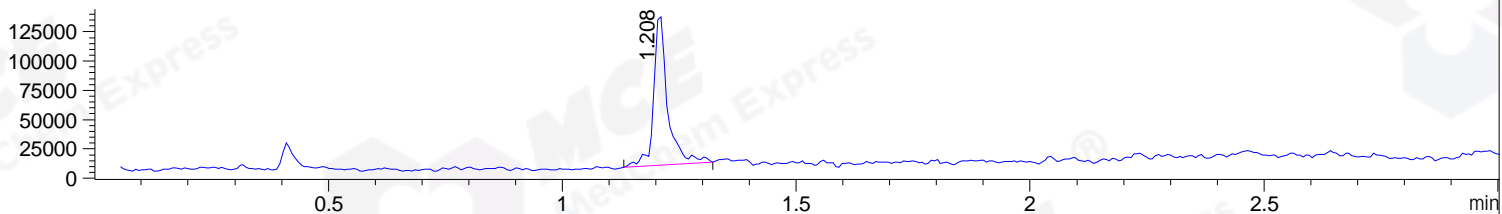
DAD1 B, Sig=214,4 Ref=off



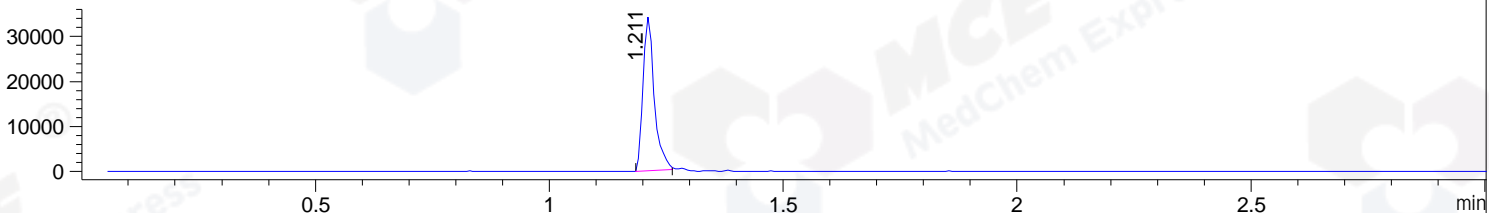
DAD1 C, Sig=254,4 Ref=off



MSD1 TIC, MS File ES-API, Pos, Scan, Frag: 70



Ion 739.38533, MSD1 739.38533, Target Mass 738.38533 +H Positive, EIC=739.09:740.09



Integration Results for DAD1 B, Sig=214,4 Ref=off

RetTim	Width	Area	Height	Area%	MS (+)
1.17	0.01	5.02	5.74	0.76	130
1.20	0.02	654.31	631.91	99.24	370

Integration Results for DAD1 C, Sig=254,4 Ref=off

RetTim	Width	Area	Height	Area%	MS (+)
1.14	0.02	1.23	1.22	0.98	130
1.17	0.02	1.43	1.52	1.14	130
1.20	0.02	121.89	117.41	97.41	370
1.34	0.01	0.59	0.69	0.47	130

Integration Results for MSD1 TIC, MS File

RetTim	Width	Area	Height	Area%	MS (+)
1.21	0.03	264880.22	130535.27	100.00	370

Ret. Time: 1.21

<<<< POSITIVE SPECTRA >>>>

ES-API Positive

