

## Tipifarnib

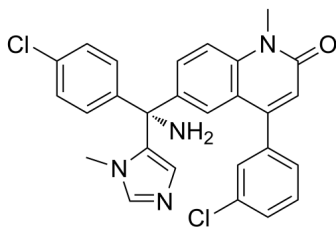
---

Cat. No.: HY-10502  
Batch No.: 250576  
CAS No.: 192185-72-1  
Molecular Formula: C<sub>27</sub>H<sub>22</sub>Cl<sub>2</sub>N<sub>4</sub>O

### ANALYTICAL DATA

Theoretical: C(62.8%), H(4.88%), N(10.85%)  
Result: C(62.505%), H(4.715%), N(10.705%)

Chemical Structure:



**Caution: Product has not been fully validated for medical applications. For research use only.**

Tel: 609-228-6898

Fax: 609-228-5909

E-mail: [tech@MedChemExpress.com](mailto:tech@MedChemExpress.com)

Address: 1 Deer Park Dr, Suite F, Monmouth Junction, NJ 08852, USA